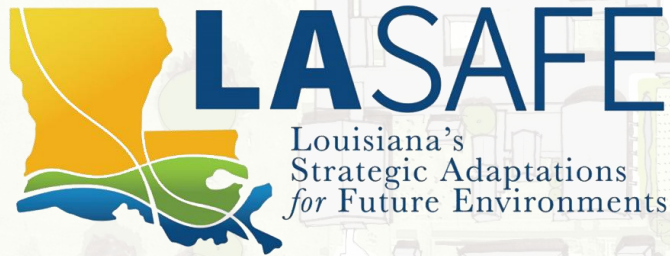


Community-Centered Resilience: Lessons from Louisiana



Environmental and Energy Study Institute // 11.6.19

Mathew D. Sanders, AICP

Resilience Policy & Program Administrator
Louisiana Office of Community Development



Liz Williams Russell

Coastal Community Resilience Director
Foundation for Louisiana



Elder Donald Bogen, Jr.

Organizer
Bayou Interfaith Shared Community Organizing



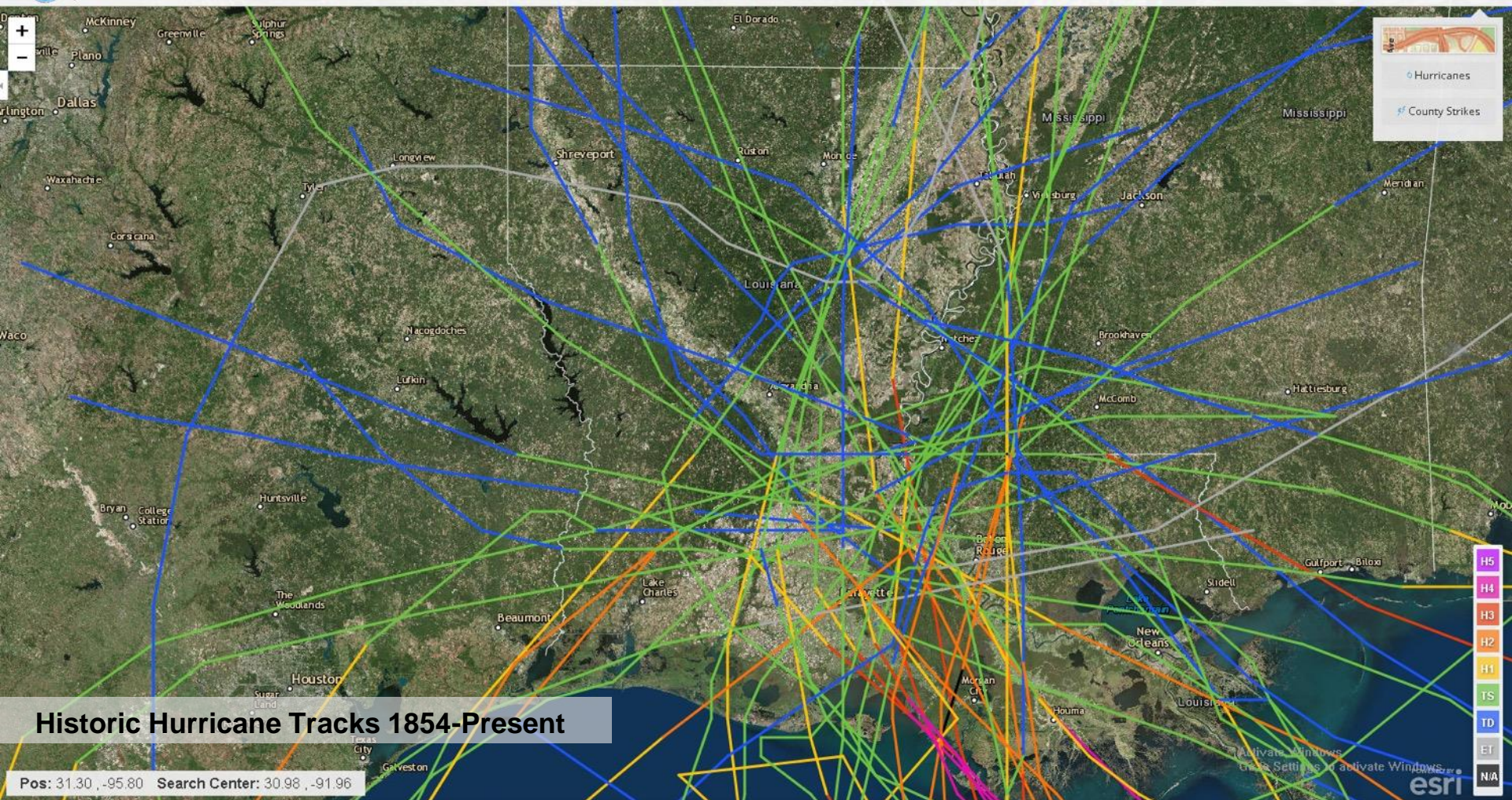
Justin Kozak, PhD, CFM

Researcher & Policy Analyst
Center for Planning Excellence (CPEX)





Historical Hurricane Tracks

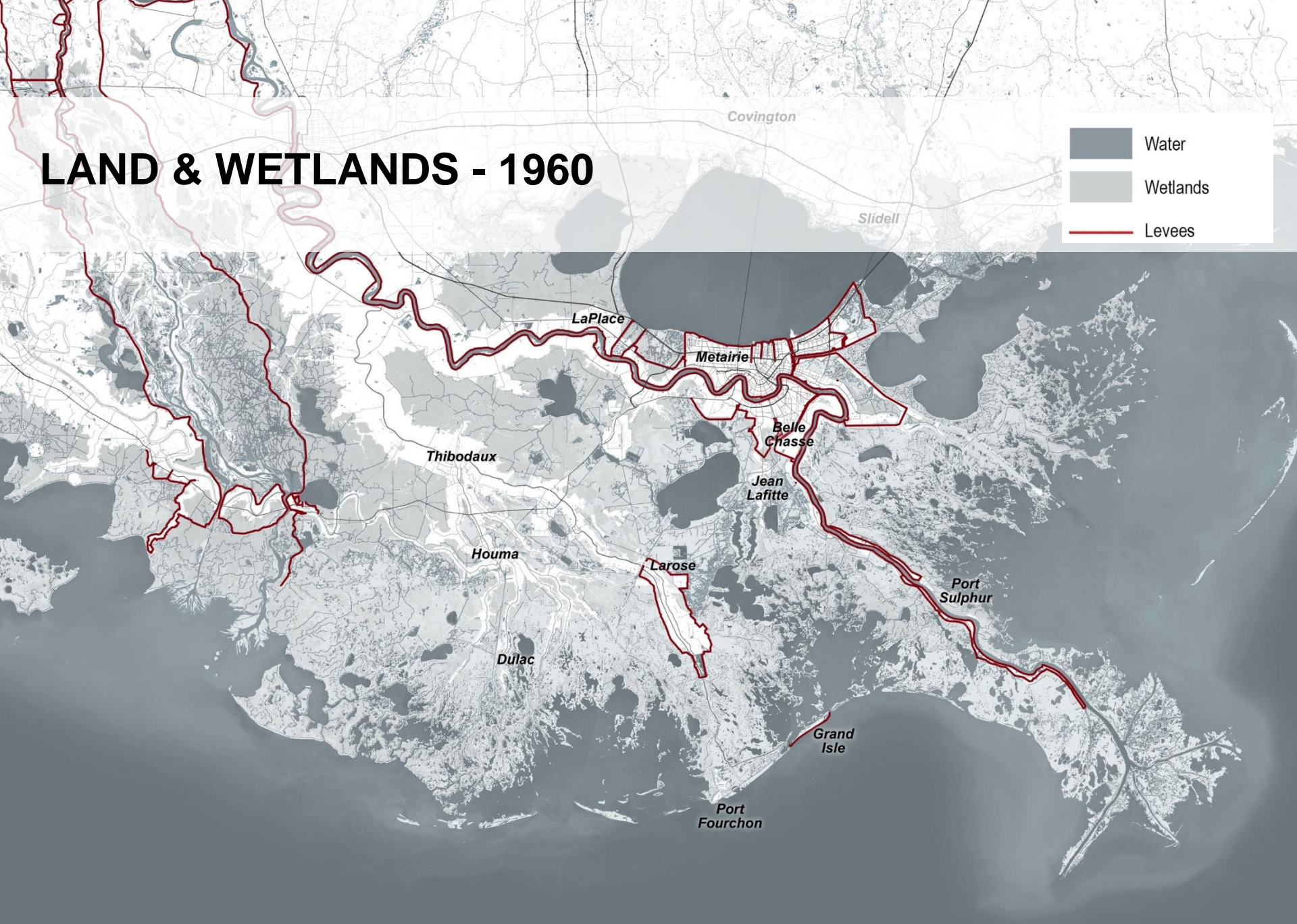
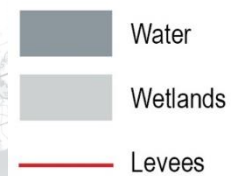


Historic Hurricane Tracks 1854-Present

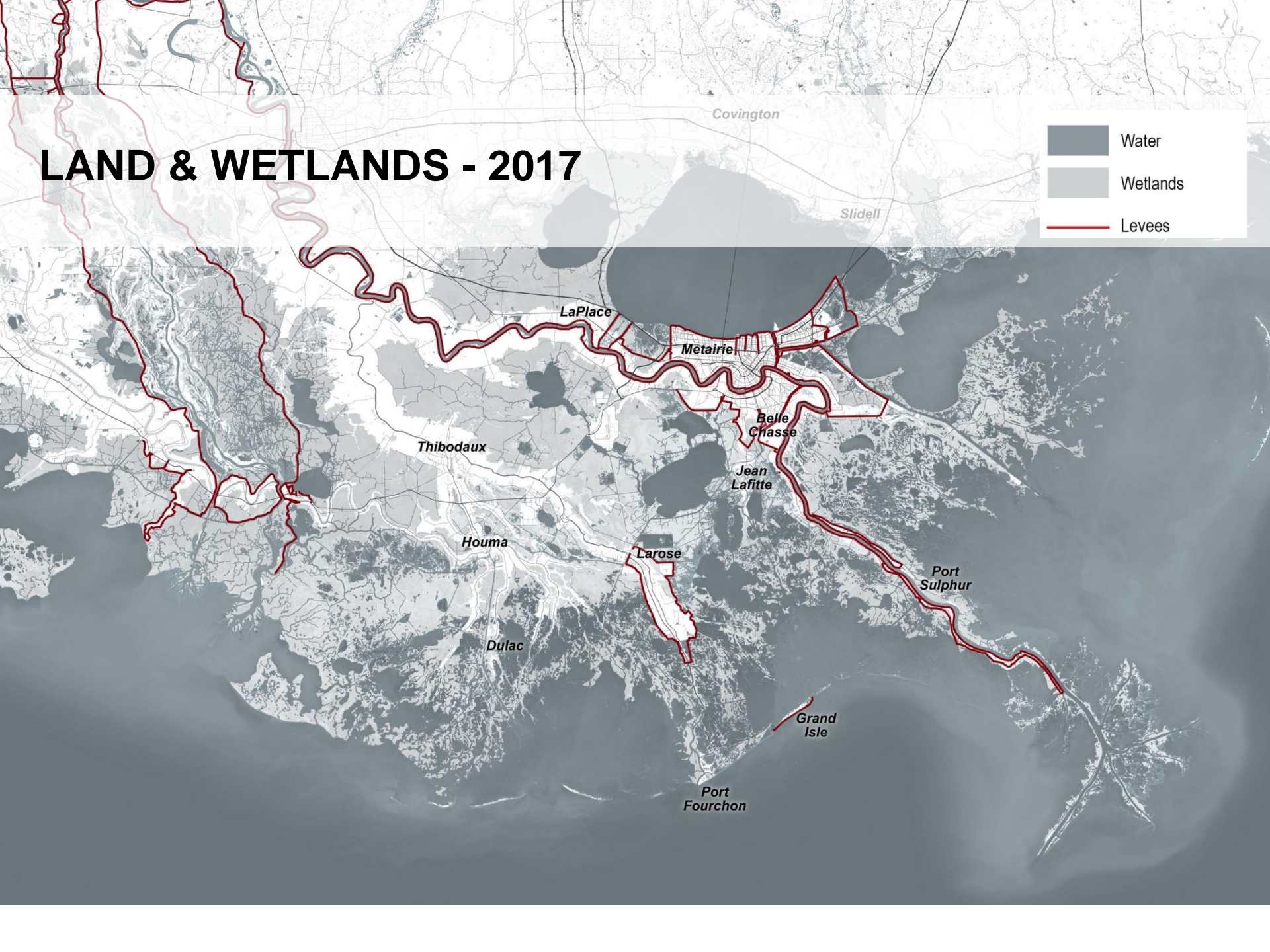
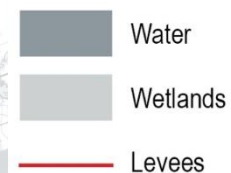
- H5
- H4
- H3
- H2
- H1
- TS
- TD
- ET
- N/A

Pos: 31.30, -95.80 Search Center: 30.98, -91.96

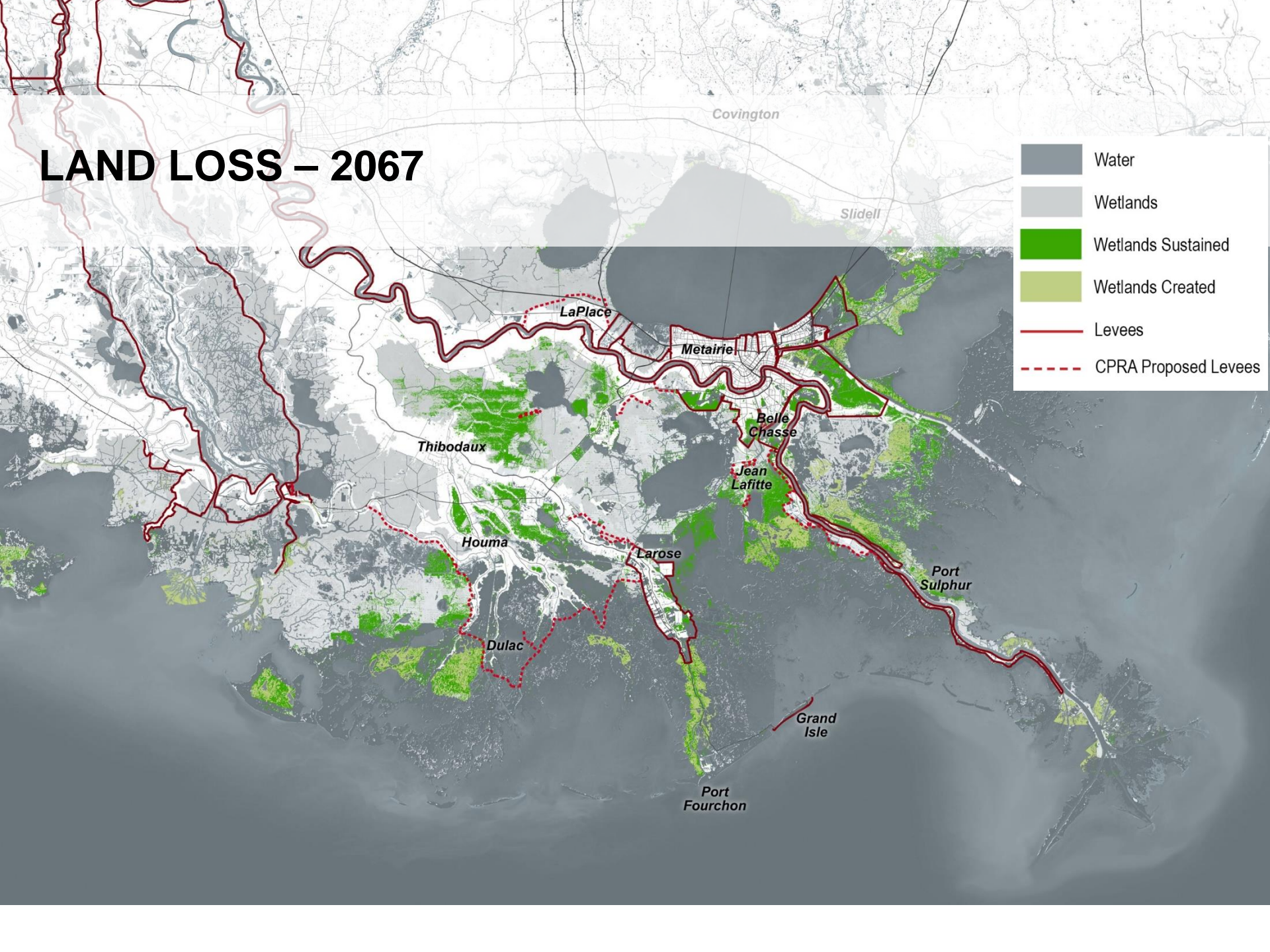
LAND & WETLANDS - 1960



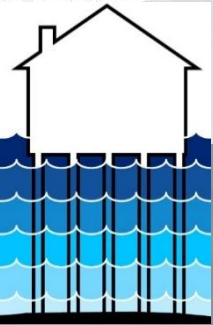
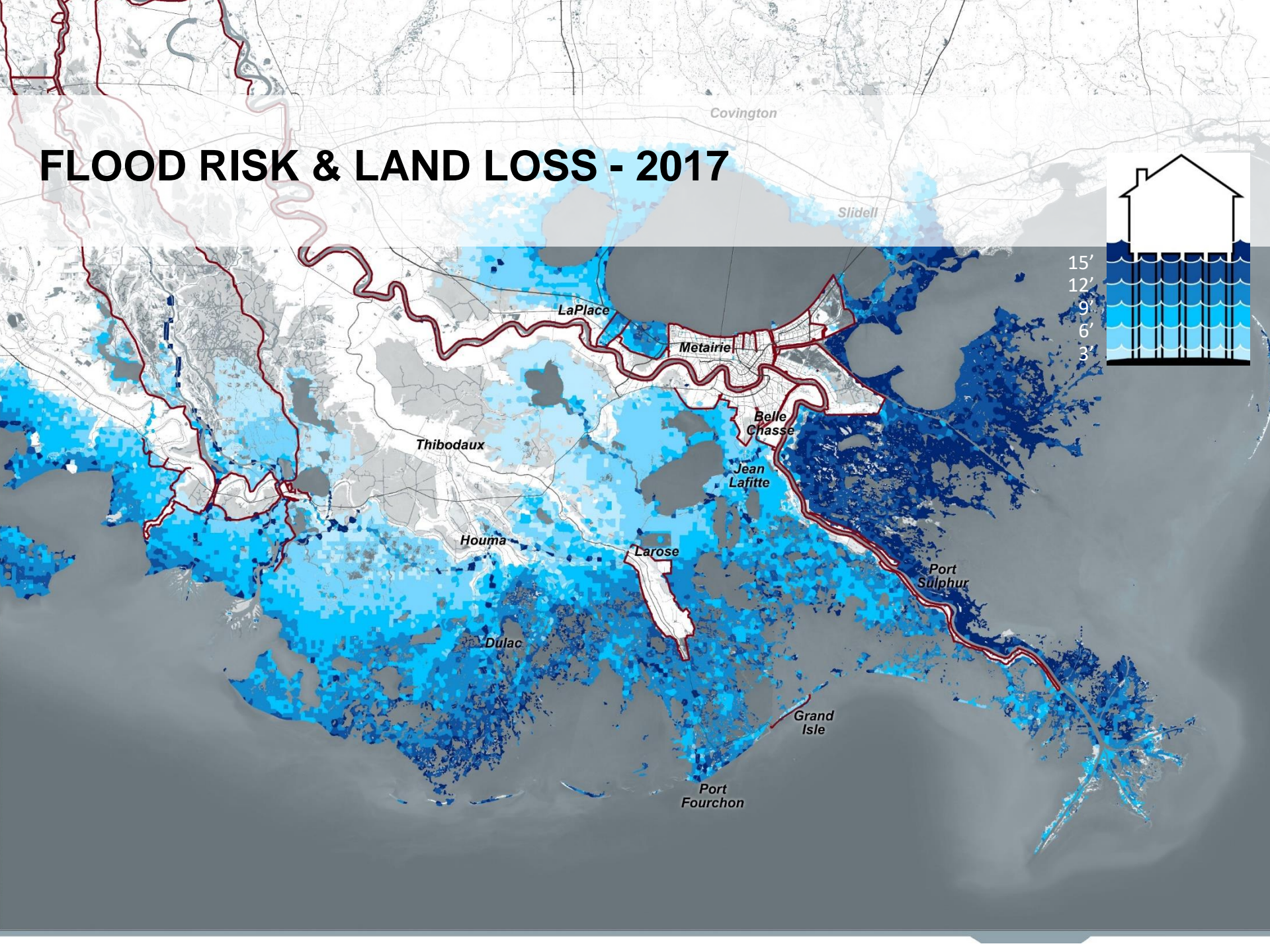
LAND & WETLANDS - 2017



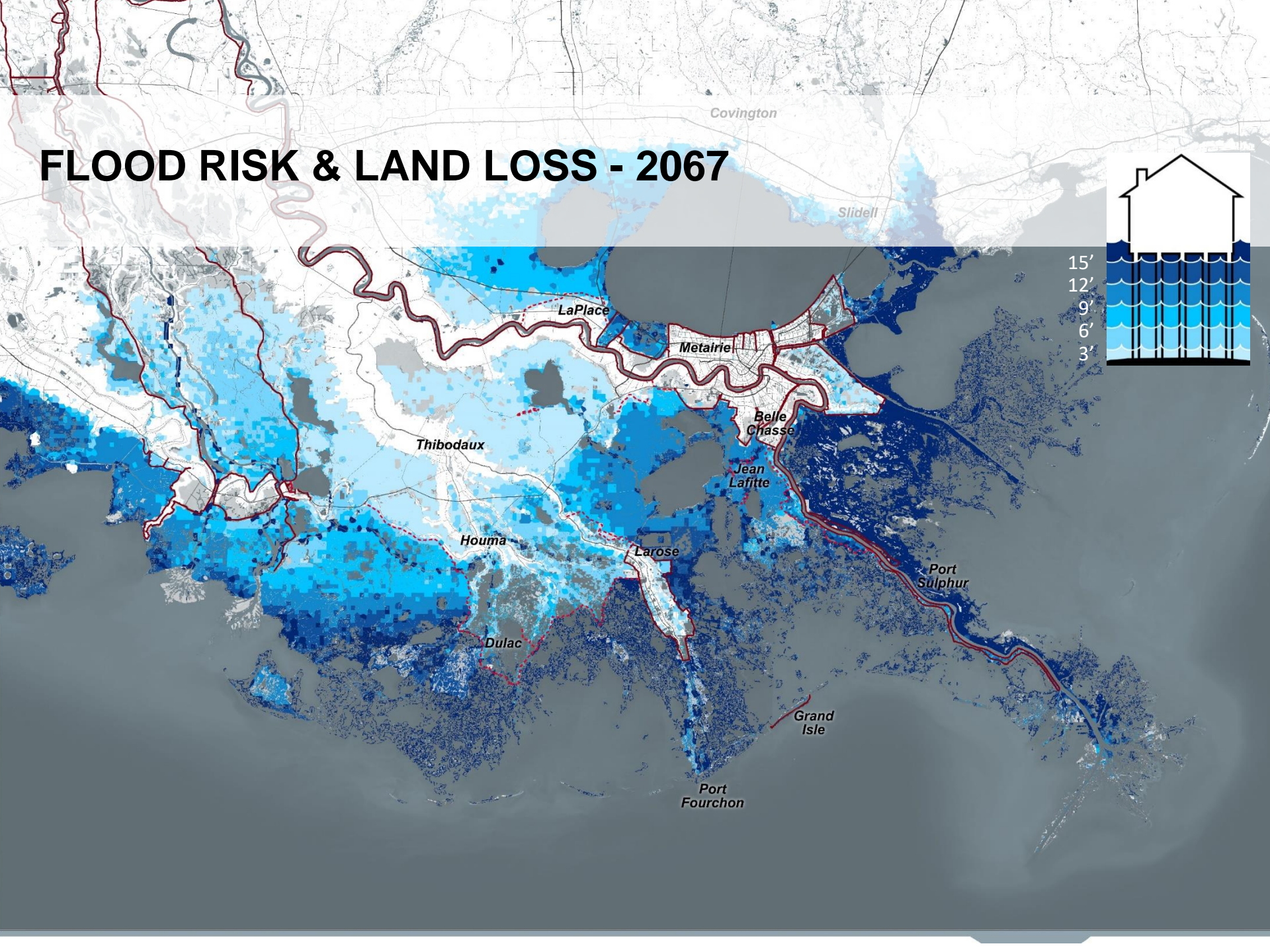
LAND LOSS – 2067



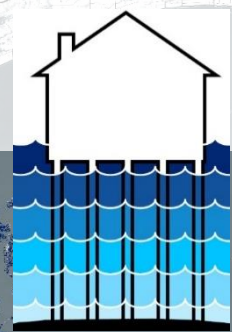
FLOOD RISK & LAND LOSS - 2017



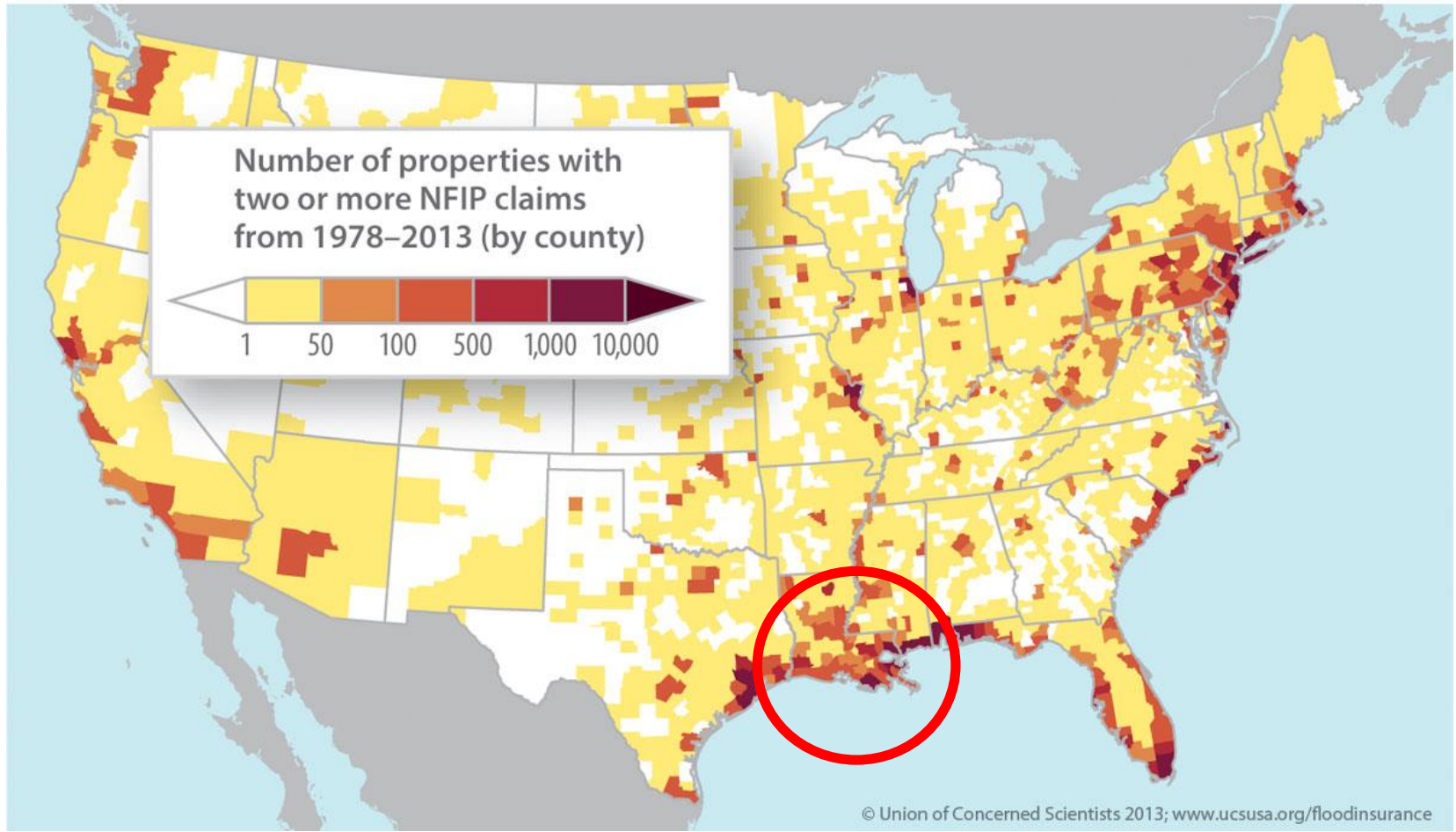
FLOOD RISK & LAND LOSS - 2067



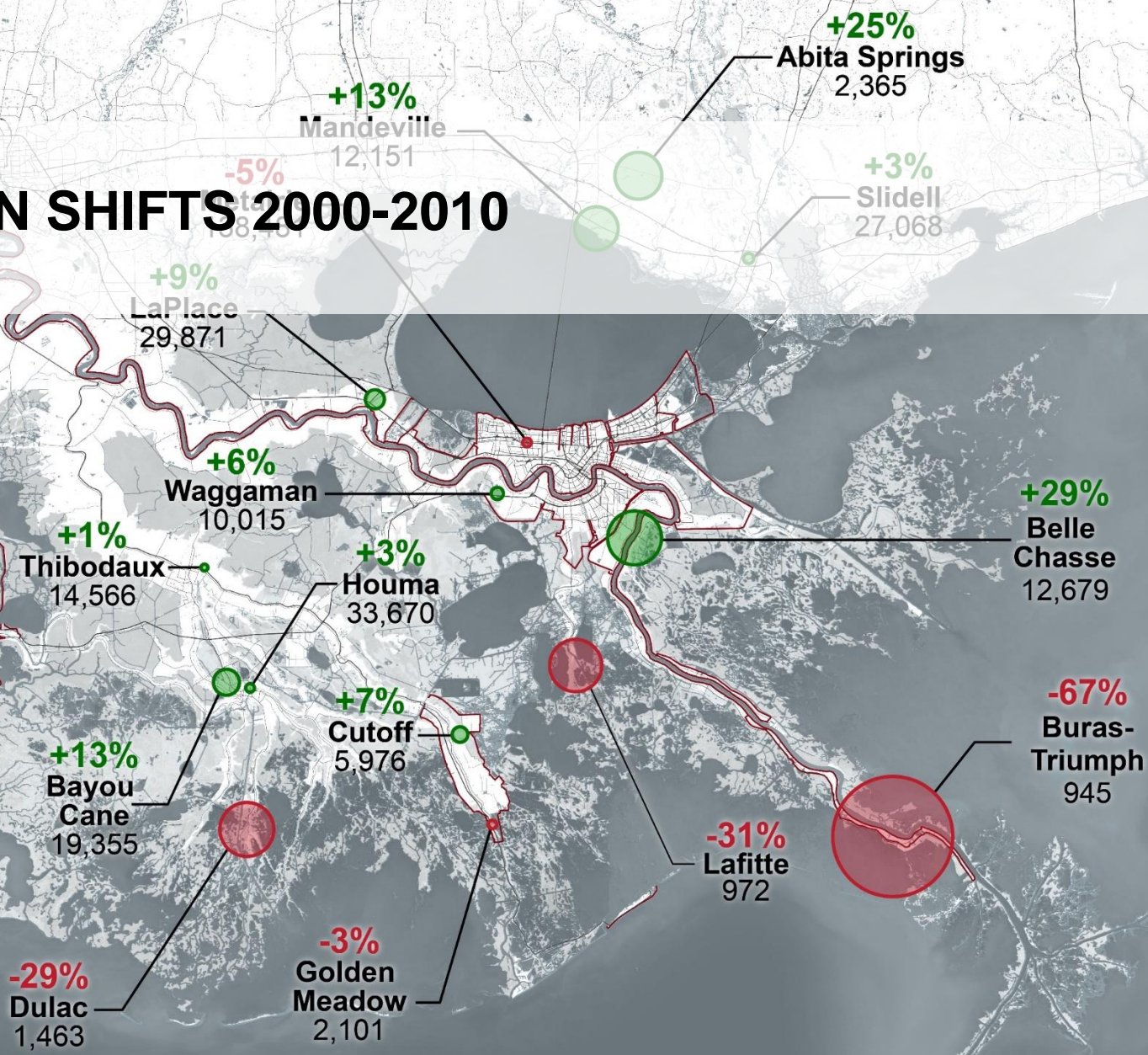
15'
12'
9'
6'
3'



Repetitive-Loss Properties by U.S. County



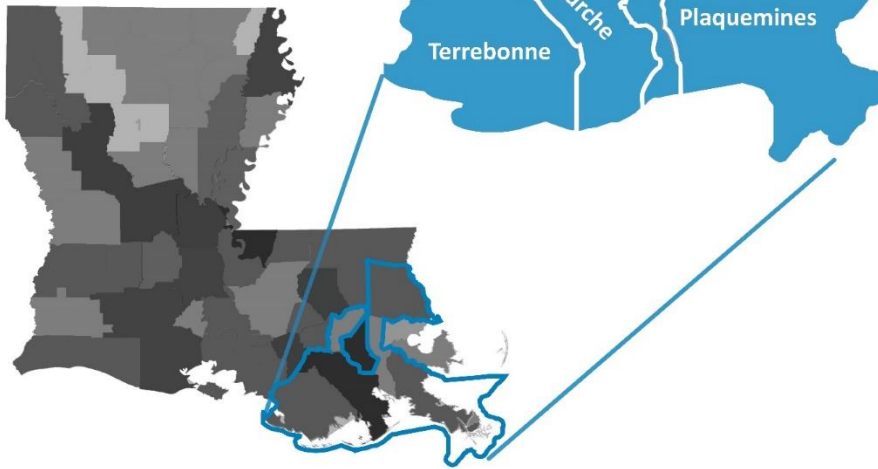
POPULATION SHIFTS 2000-2010



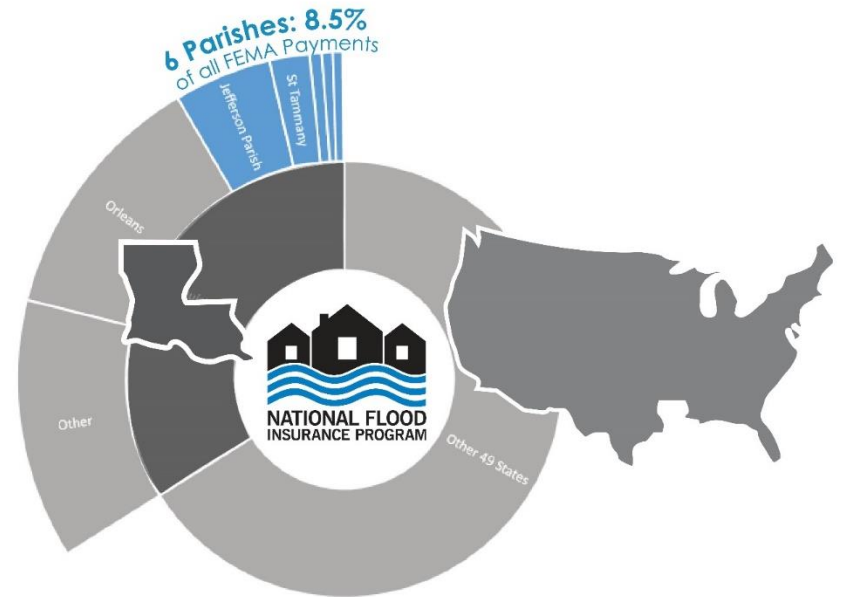
Data prepared by Esri, sourced from U.S. Census Bureau, Census 2000 Summary File 1 and Census 2010 Summary File 1.



FEMA DECLARED DISASTERS



Number of FEMA declared disasters since 2011 in each Parish. Source: FEMA

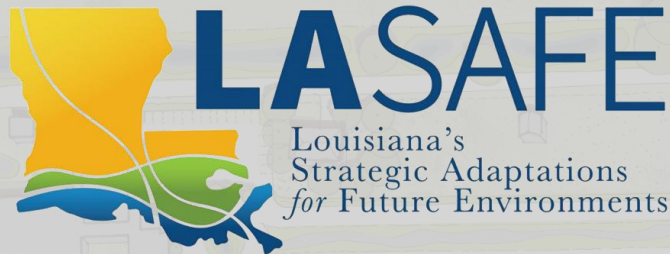


The average household in the six LA SAFE parishes has received over **28x the national average** in FEMA disaster recovery payments between 1978 and 2016.

In Plaquemines, its **268x the national average**.

FEMA's NFIP PAYMENTS, 1978 - 2016

	U.S.	Louisiana	6 LA SAFE Parishes	Plaquemines Parish
Total NFIP Payments	\$57.3 B	\$19.4 B	\$4.9 B	\$361 M
Historic Payments per Household	\$490	\$11,260	\$13,920	\$131,564



**Working together for community resilience,
economic prosperity, and a better quality of life
for everyone in Louisiana.**

2017

Outreach
& Engagement



2018

Plan Development
& Implementation

March & April

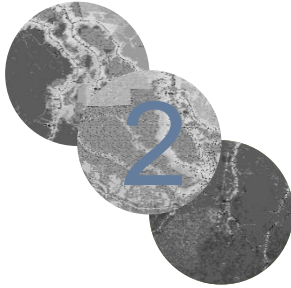
Parishwide Meeting



**Identify
Challenges &
Opportunities**

May & June

Community Meetings



**Propose
Strategies**

July & August

Parishwide Meeting



**Evaluate
Vision &
Strategies**

October

**Stakeholder
Round-tables &
Open Houses**



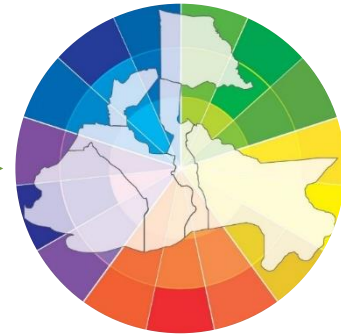
**Policy,
Program, &
Project
Development**

December

Parishwide Meeting



**Project
Evaluation**



**71 Community Meetings
2,835 Individual Participants**

No growth—protect green space

Ferry needs to run more frequently

Turn Red Star Yeast building into mixed-use

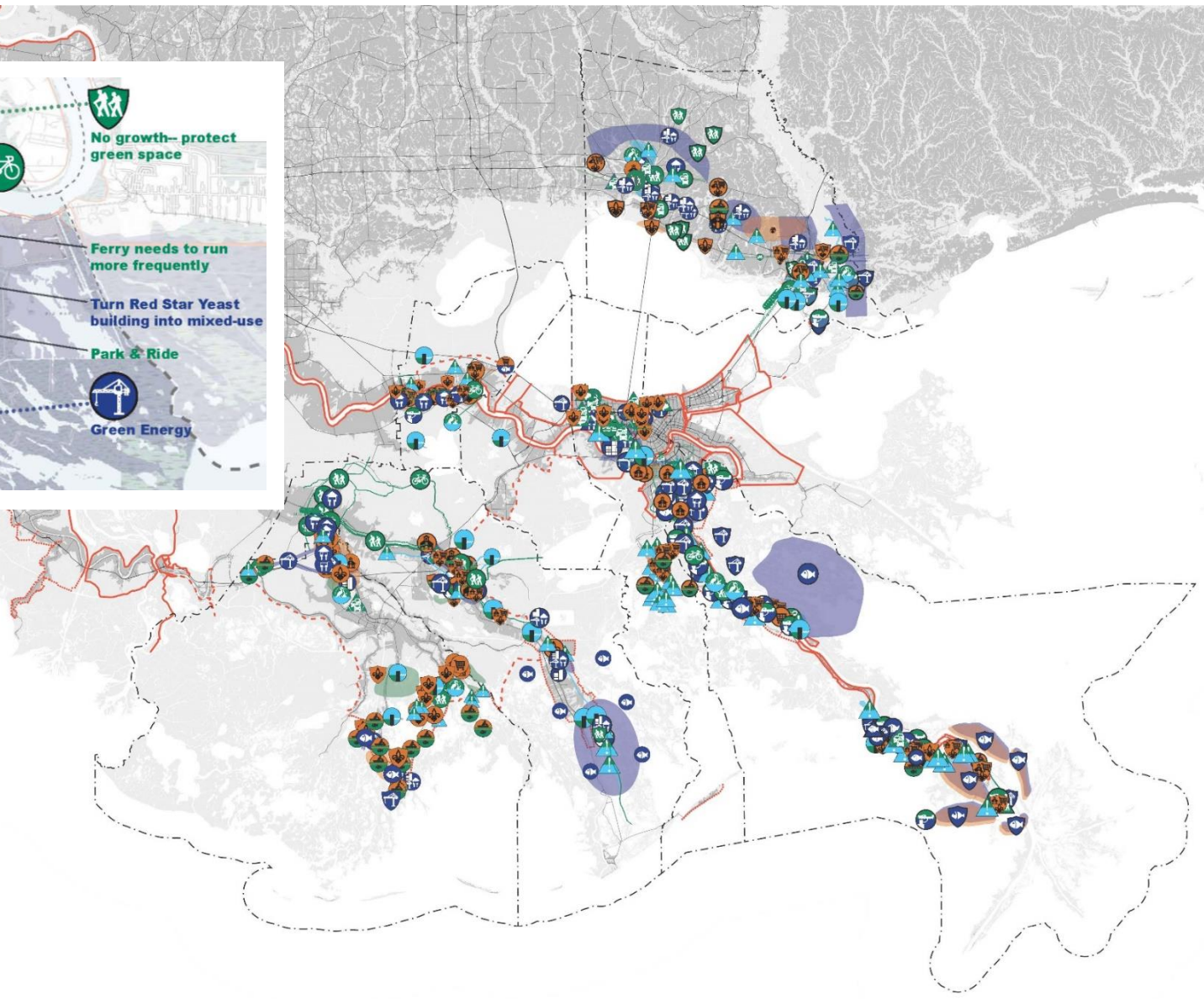
Park & Ride

Green Energy

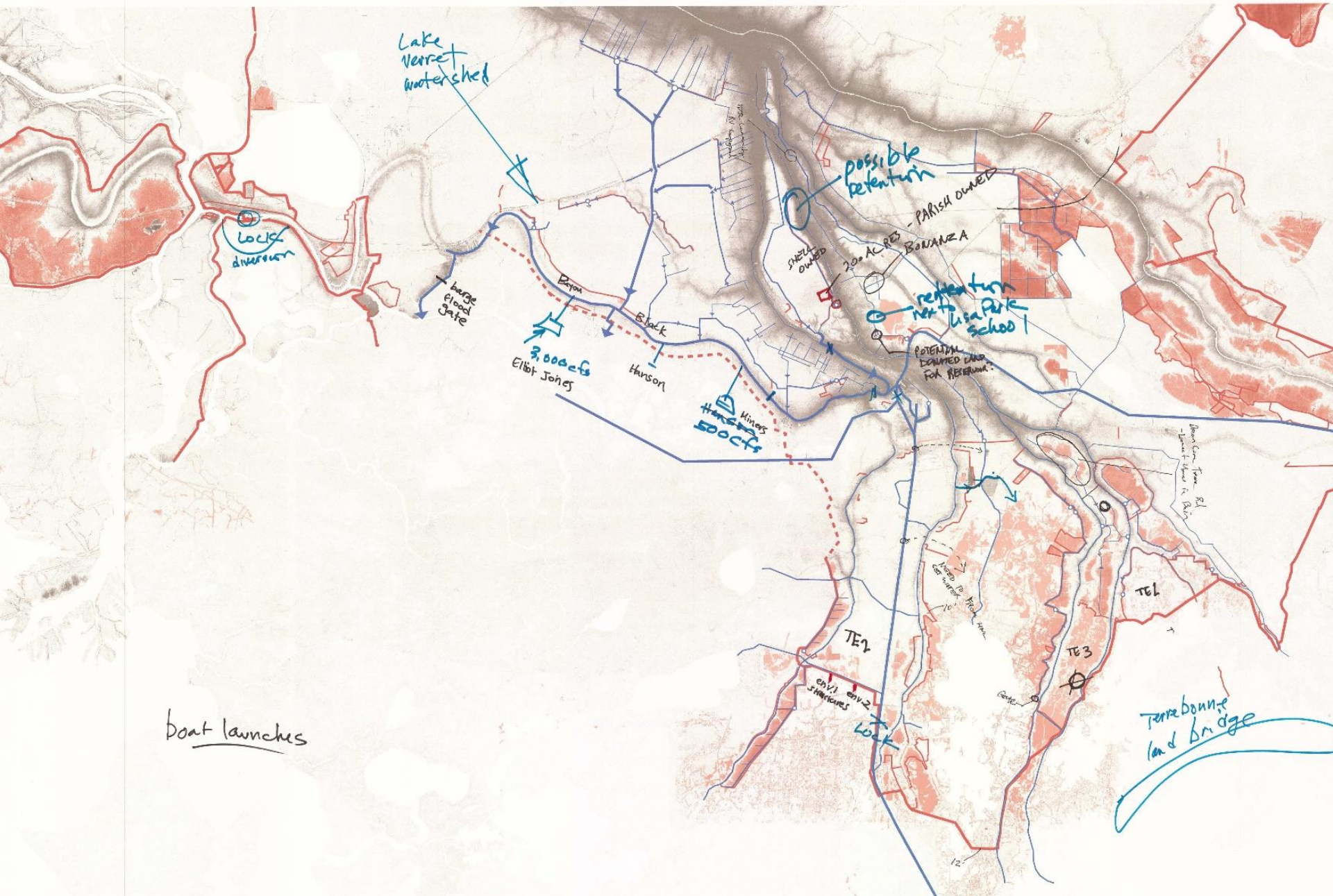
Belle Chasse

Metairie

The inset map shows a detailed view of the Belle Chasse and Metairie areas. It features several icons: a bicycle, a house with a tree, a factory, a bus, and a person walking. A green line highlights a path or boundary, and a blue line indicates a waterway. The text annotations provide specific planning recommendations for these areas.







Lake Verret watershed

Locks diversion

barge float gate

3,000 cfs

Hanson

Hanson 500 cfs

possible retention

PARISH OWNED

200 AC RES

BORAZA

retention near Lisa Park School

POTENTIAL EXCAVED CANAL FOR RETENTION

boat launches

Terrebonne land bridge

TE2

TE3

Lock

center

12

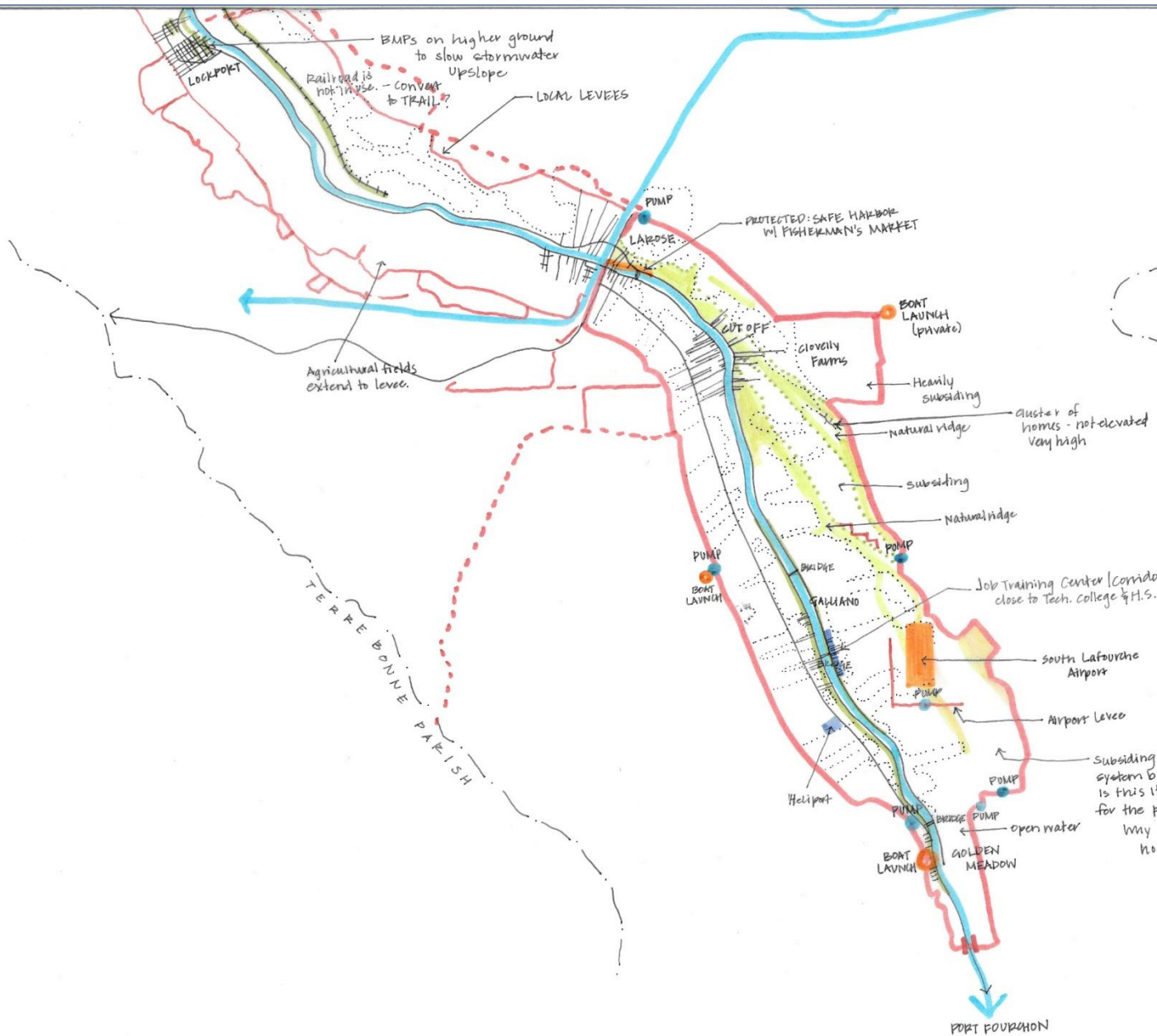
civil structures

env-1

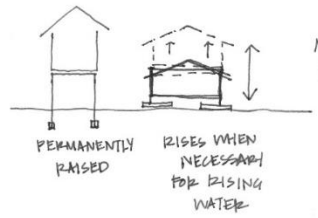
env-2

Johns Creek from Old
Lagoon to Black River





EXAMPLE OF ADAPTATION:



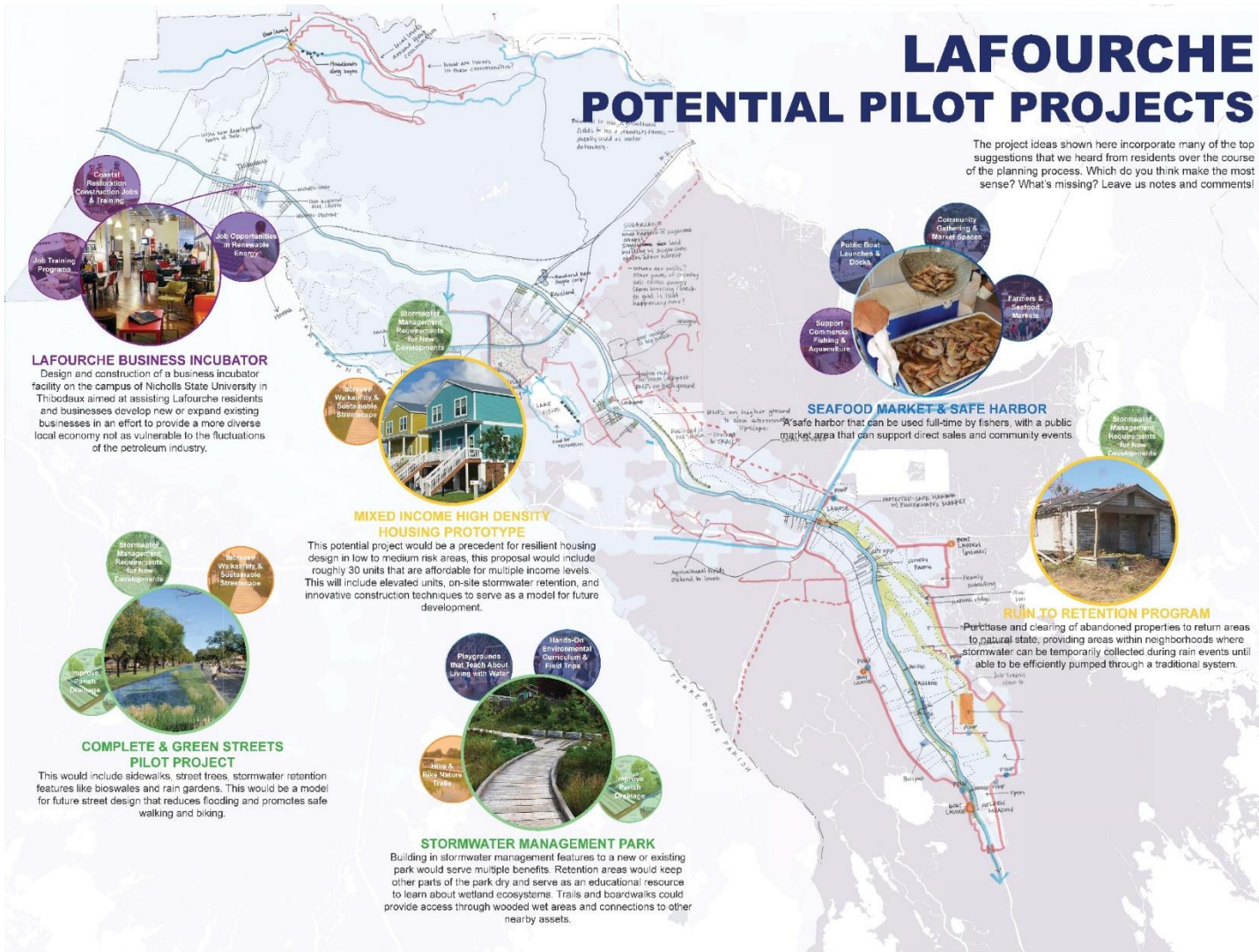
COMMUNITY CONCERNS:

1. Healthcare
2. Job Training

LA SAFE
combined the
highest rated
community
strategies with
future flood risk
and **existing**
efforts in each
parish to create
draft projects

LAFORCHE POTENTIAL PILOT PROJECTS

The project ideas shown here incorporate many of the top suggestions that we heard from residents over the course of the planning process. Which do you think make the most sense? What's missing? Leave us notes and comments!



Community Ranking
 Lowest ranked by community

Highest Ranked by community

St. Tammany



St. John



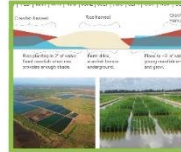
Plaquemines



Jefferson

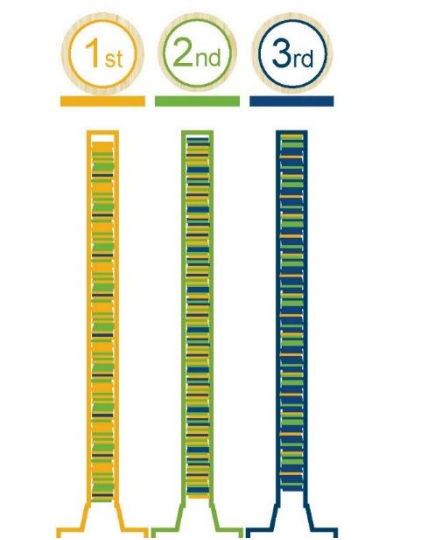


Terrebonne



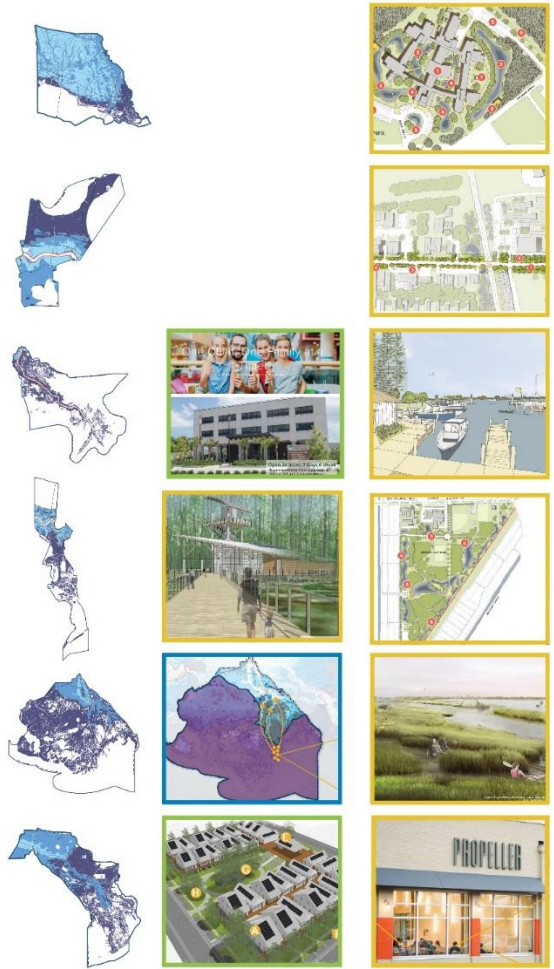
Lafourche





Selected Project Portfolio

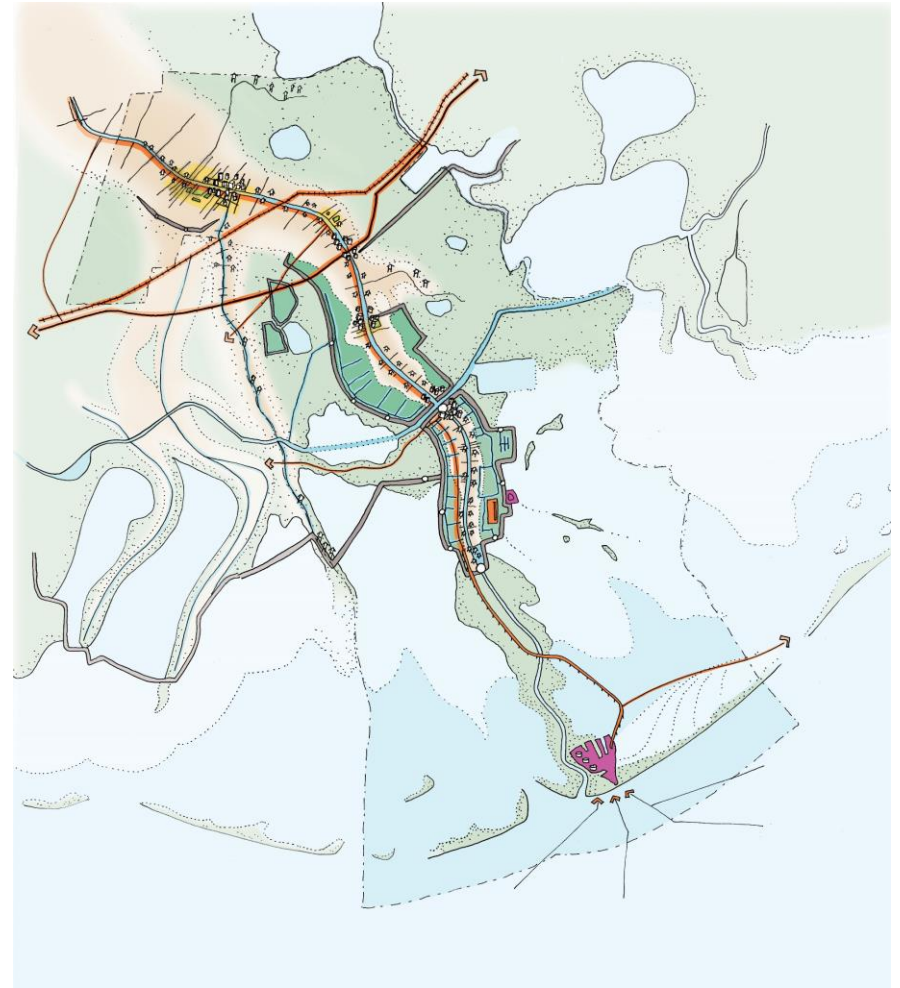
Most popular strategies



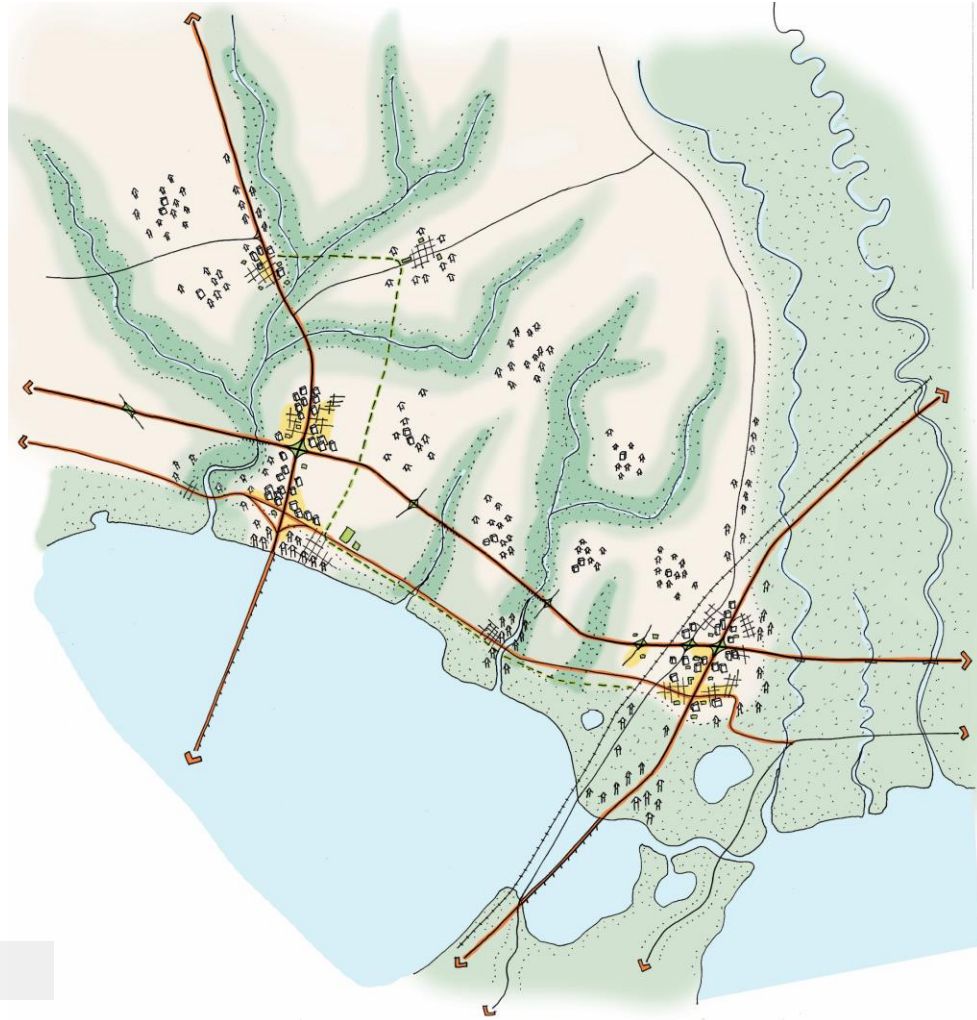
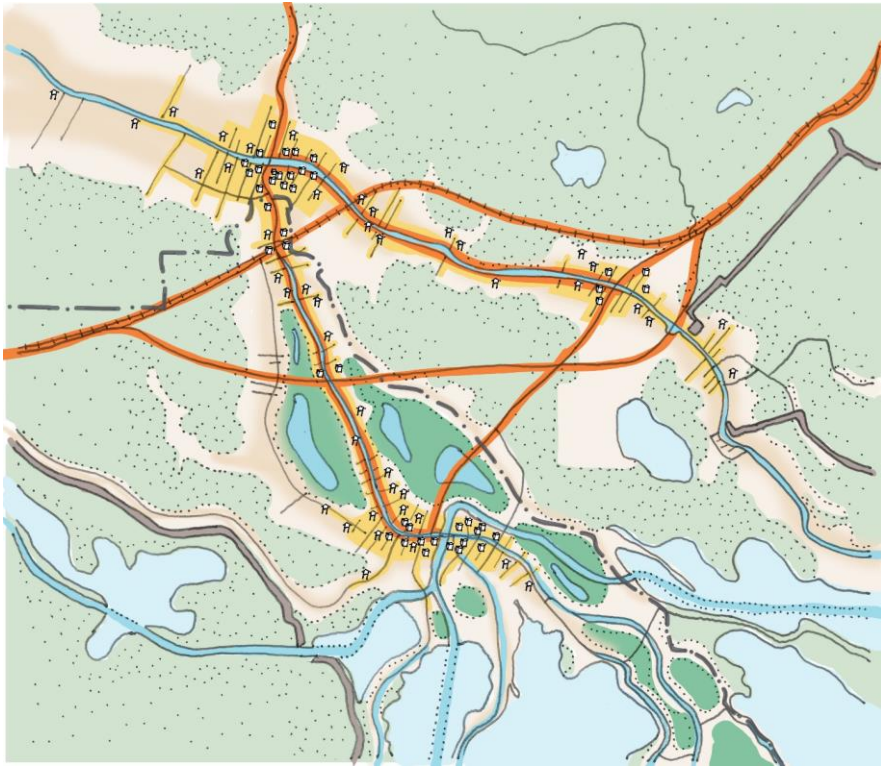
- Safe Haven Blue-Green Campus & Trails
- Airline & Main Complete Streets
- Harbor of Refuge
- Mental Health & Substance Abuse
- Gretna Resilience District Kickstart
- Louisiana Wetland Education Center
- Buyouts for Permanent Resident Households Outside Morganza
- Lake Boudreaux Living Mitigation
- Emerging Industry Business Incubator
- Resilient Housing Prototype

- Public Boat Docks
- Cross-Parish Stormwater Management
- Coastal Restoration and Jobs Training
- Improved Drainage System
- Job Training Programs
- Increased Affordable Housing Options
- Drainage Requirements for New Developments
- Cultural Camps & After School Programs
- Culvert & Ditch Maintenance
- Commuter & Regional Rail
- Complete Streets
- Community Gardens & Planting Programs
- Incentivize Essential Service Providers
- Medium Density Housing
- Improve Public Transit Across Parish Lines
- Create a full-time drain Maintenance Department
- Restore Abandoned Property to Natural Condition
- Expand Boat Harbors

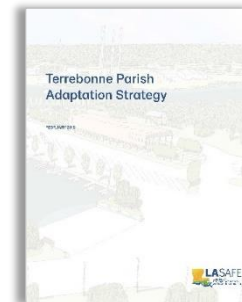
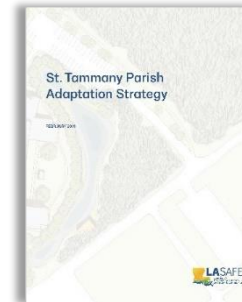
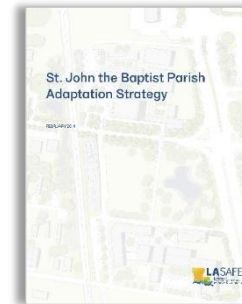
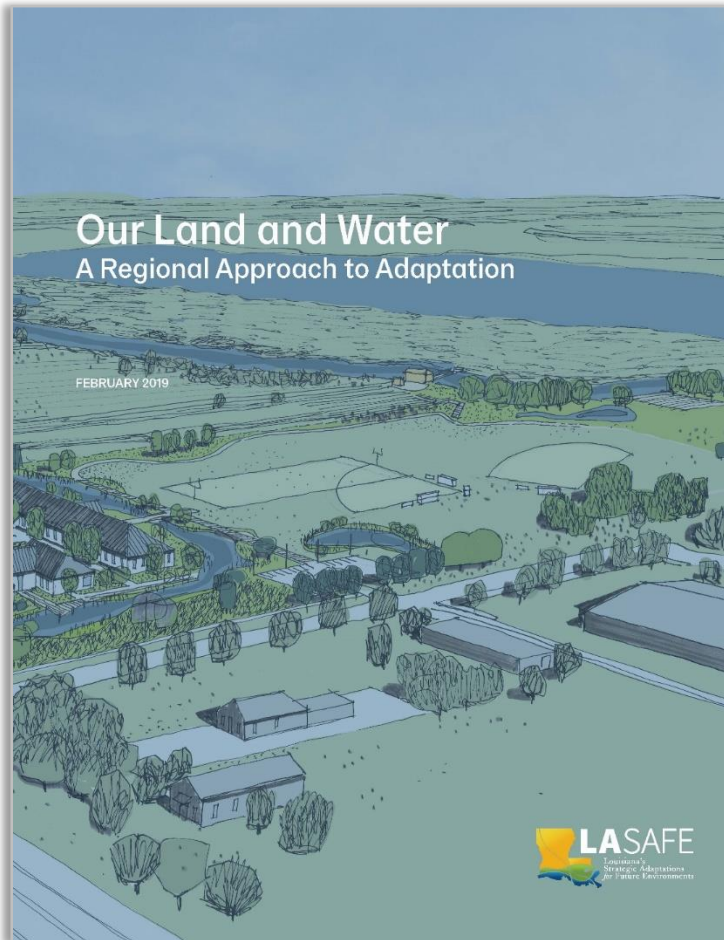
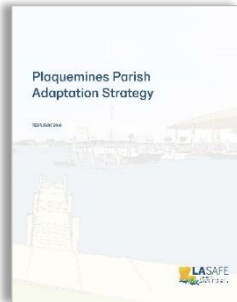
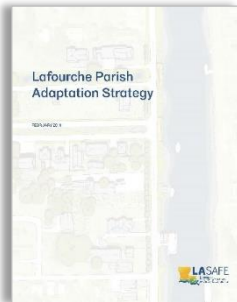
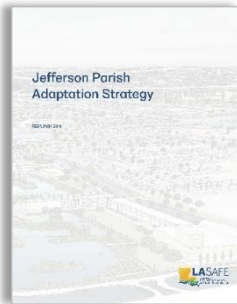




Planning Around Supply Chains and Industries



Planning for Future Growth Corridors on High Ground



Six Parish Plans, One Regional Approach