

FIFTH NATIONAL CLIMATE ASSESSMENT

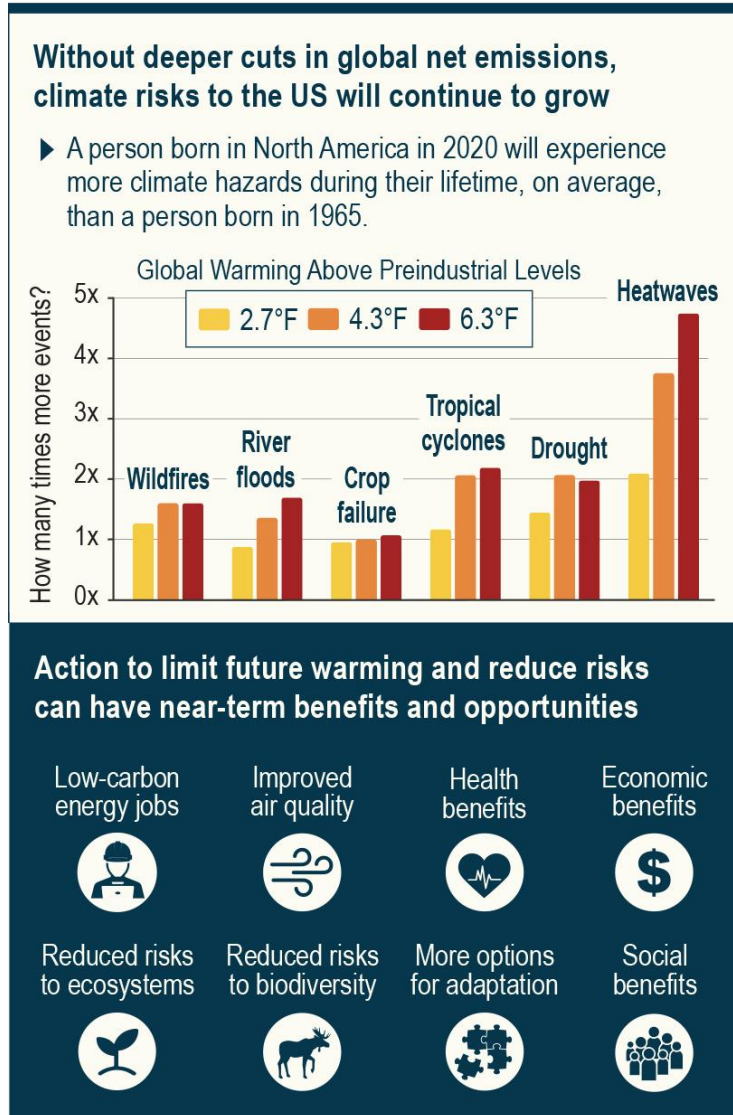
Chapter 22 | Southeast

Louie Rivers III, Environmental Protection Agency, Office of Research and Development, Immediate Office of the Assistant Administrator





Introduction: History shapes present & future risks in SE



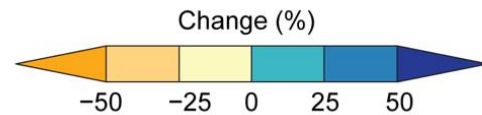
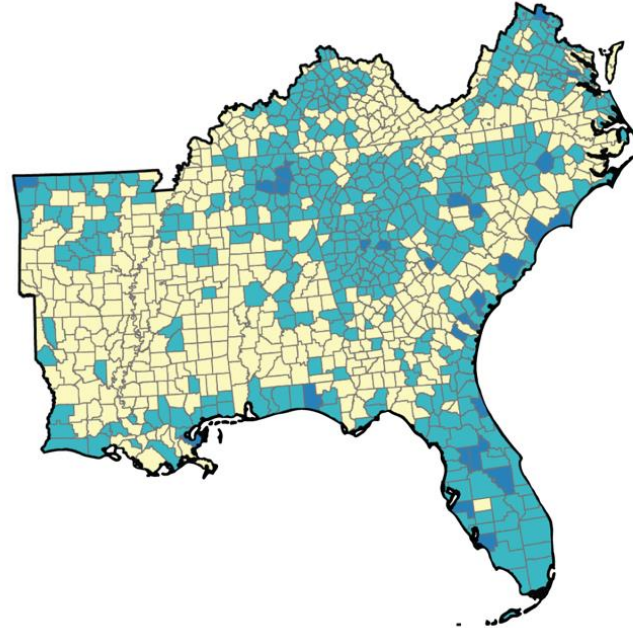
KEY
MESSAGE

1

Regional Growth Increases Climate Risks

Population Change in the Southeast

a) Change in county population,
2020 compared to 2010



b) Projected change in county population
(SSP2), 2050 compared to 2020

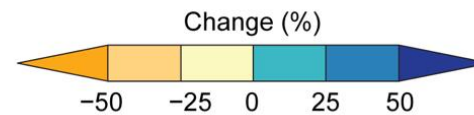
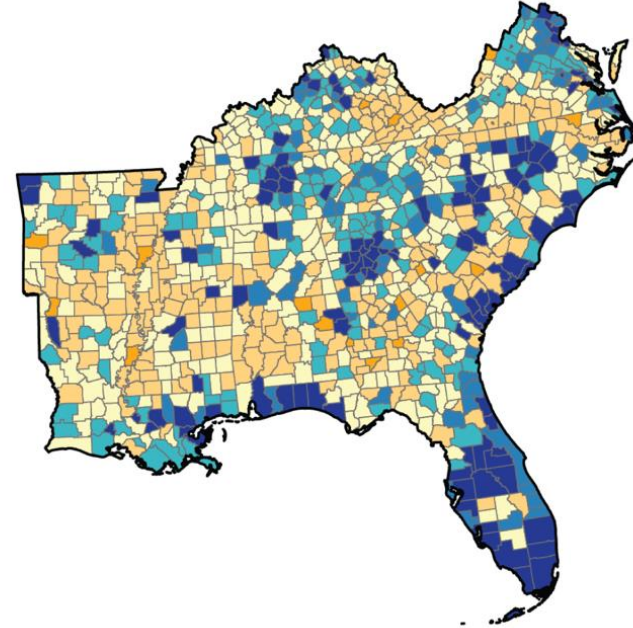


Figure 22.1. Population change in the Southeast exposes more people to climate threats along the coast and in cities while leaving rural areas with limited capacity.

KEY
MESSAGE

2

Climate Change Worsens Human Health and Widens Health Inequities

Present-Day Health Inequities

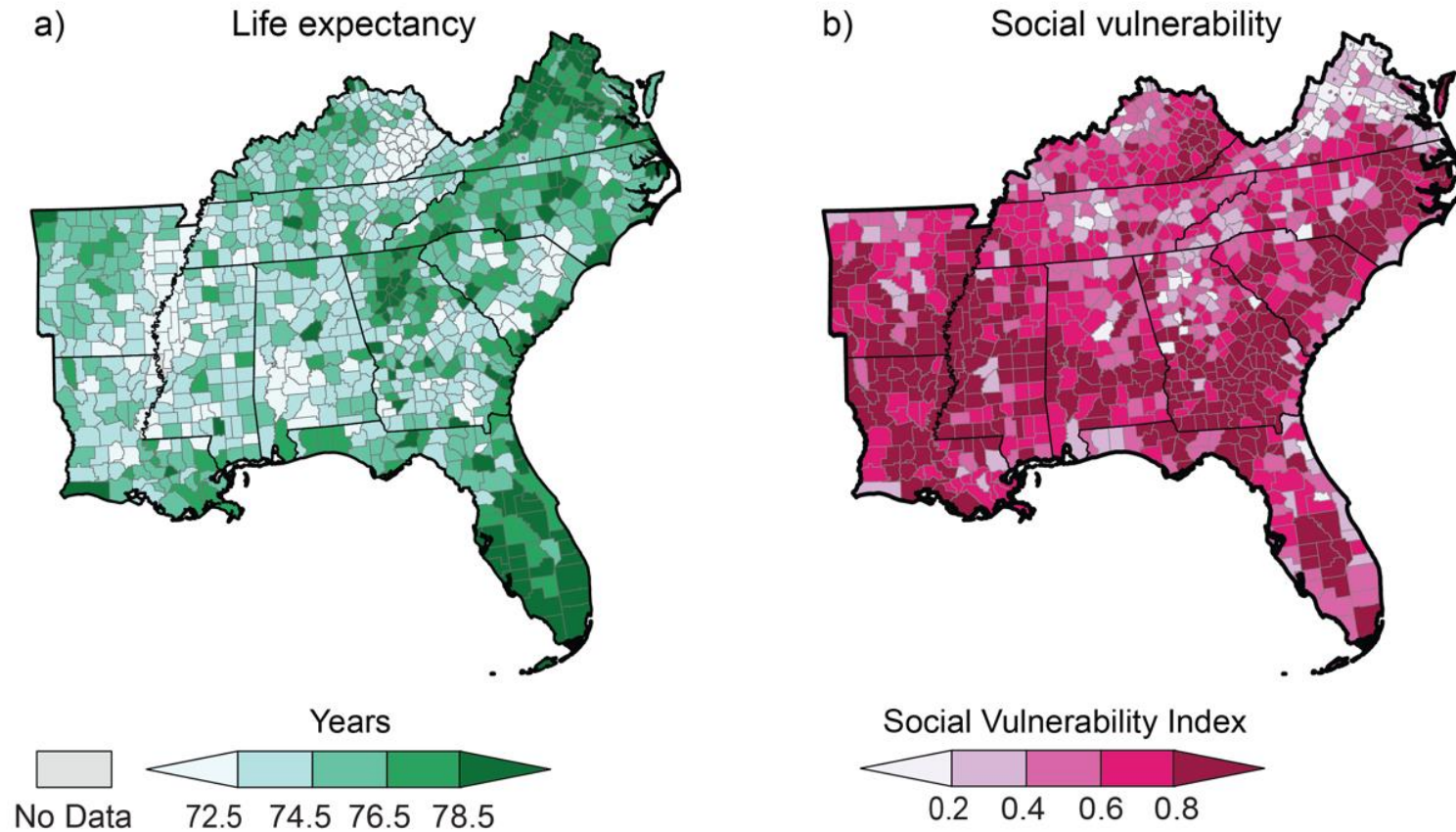


Figure 22.8. Present-day health inequities in the Southeast exacerbate climate-related risks.

KEY
MESSAGE

3

Climate Change Disproportionately Damages Southeastern Jobs, Households, and Economic Security

Household Income and Rural Capacity for Action

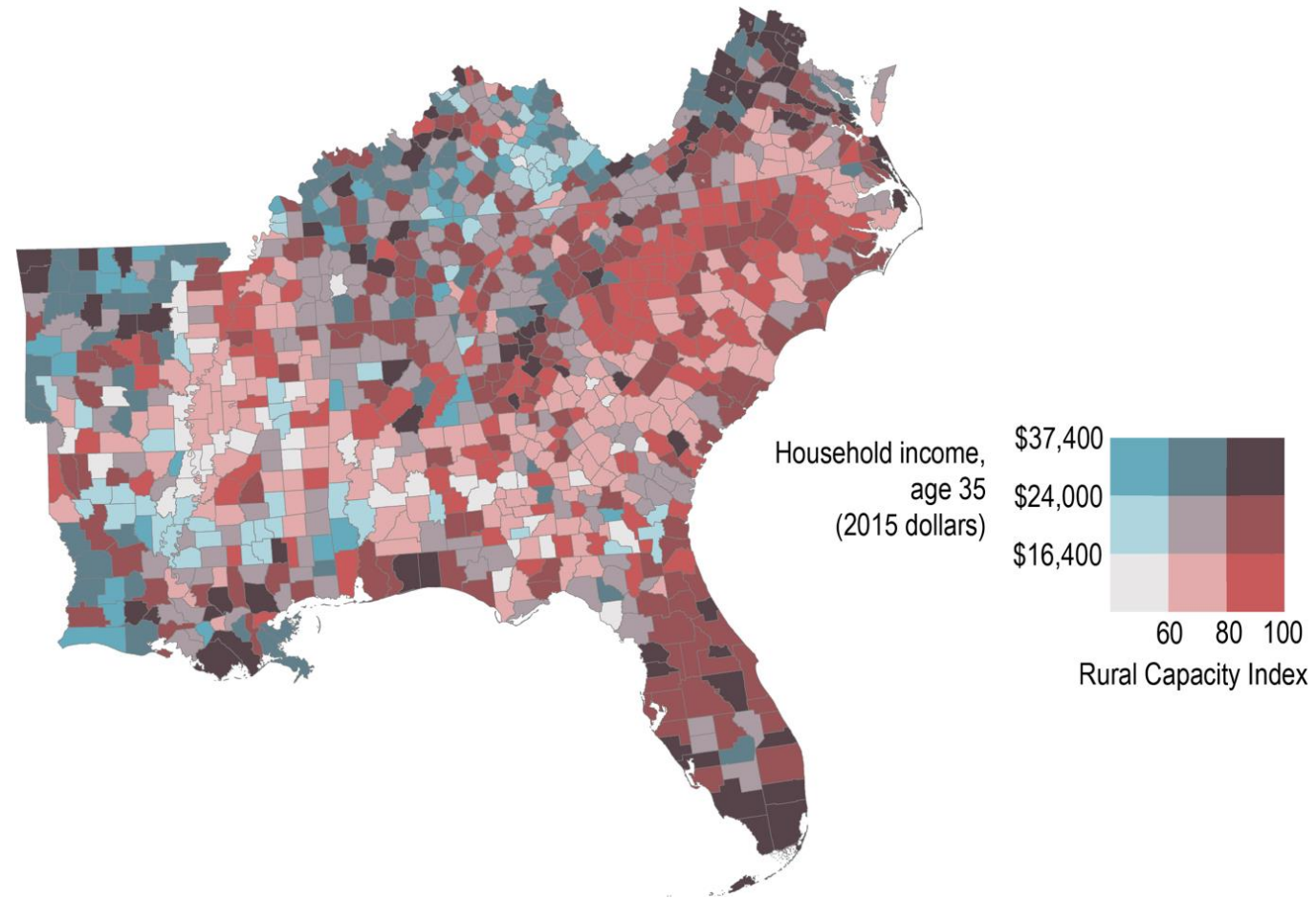


Figure 22.12. Counties where low-income households overlap with limited community capacity (shown in light gray) highlight rural climate risk challenges.

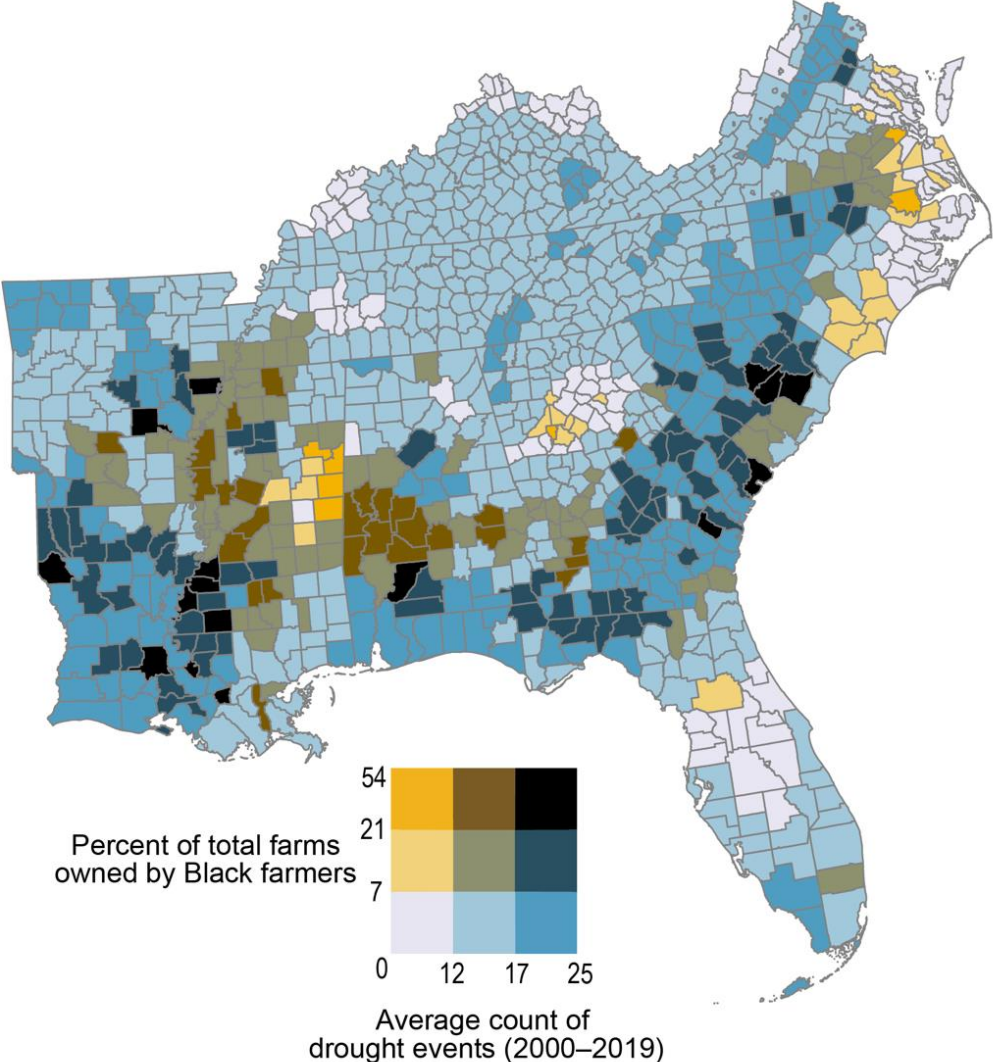
KEY
MESSAGE

4

Agriculture Faces Growing Threats, but Innovations Offer Help

Figure 22.18. The Southeast's Black farmers face disproportionate weather and climate risks.

Droughts and Black Farmers in the Southeast





Federal Coordinating Lead Author

Steven G. McNulty, USDA Forest Service

Chapter Lead Author

Jeremy S. Hoffman, Groundwork USA

Chapter Authors

Claudia Brown, Centers for Disease Control and Prevention

Kathie D. Dello, North Carolina State University, State Climate Office of North Carolina

Pamela N. Knox, University of Georgia

Aranzazu Lascurain, National Oceanic and Atmospheric Administration

Carl Mickalonis, Federal Emergency Management Agency

Gary T. Mitchum, University of South Florida, College of Marine Science

Louie Rivers III, US Environmental Protection Agency

Marie Schaefer, US Geological Survey, Southeast Climate Adaptation Science Center

Gavin P. Smith, North Carolina State University

Janey Smith Camp, Vanderbilt University

Kimberly M. Wood, Mississippi State University

