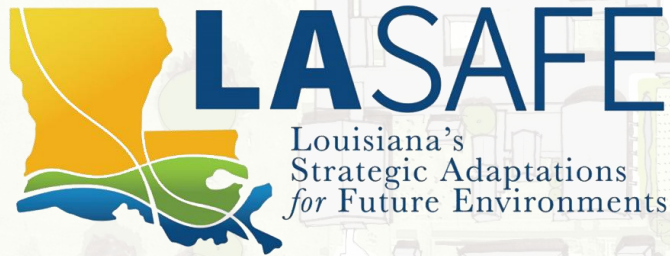


# The Need for Transformative Policy & Governance



Environmental and Energy Study Institute // 11.6.19

**Mathew D. Sanders, AICP**  
Resilience Policy & Program Administrator  
Louisiana Office of Community Development



**Liz Williams Russell**  
Coastal Community Resilience Director  
Foundation for Louisiana



**Elder Donald Bogen, Jr.**  
Organizer  
Bayou Interfaith Shared Community Organizing



**Justin Kozak, PhD, CFM**  
Researcher & Policy Analyst  
Center for Planning Excellence (CPEX)



CENTER for PLANNING EXCELLENCE

# The Disconnect Between LA SAFE Planning and Local Adoption





# How do we buy down our risk?

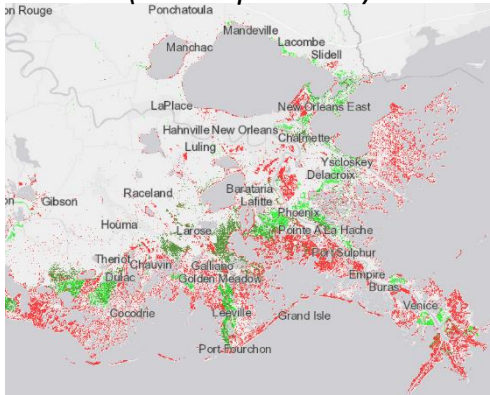


# Scenario Planning

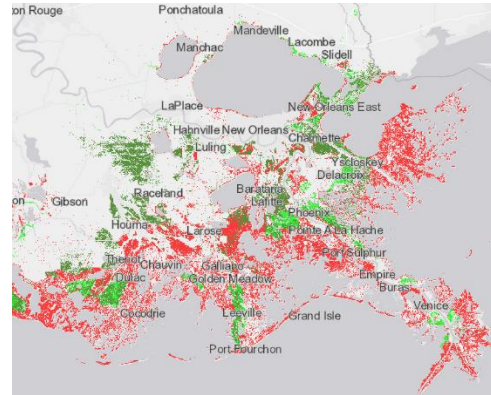


With Coastal  
Master Plan

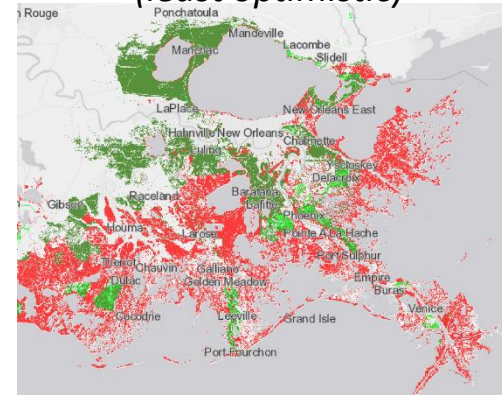
**Low Scenario**  
*(most optimistic)*



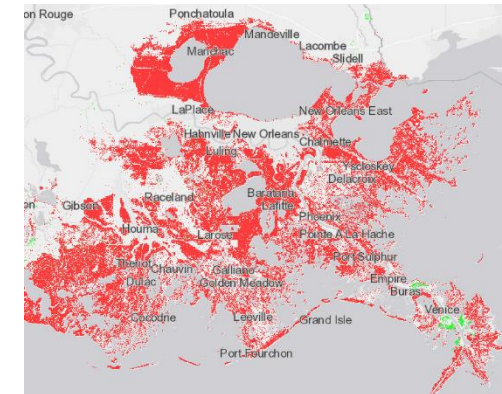
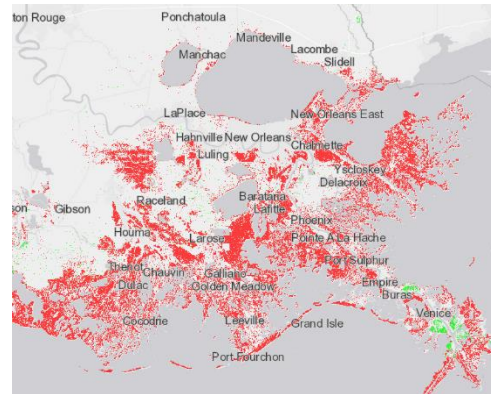
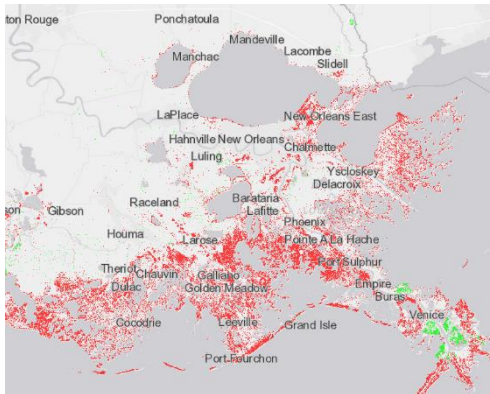
**Medium Scenario**



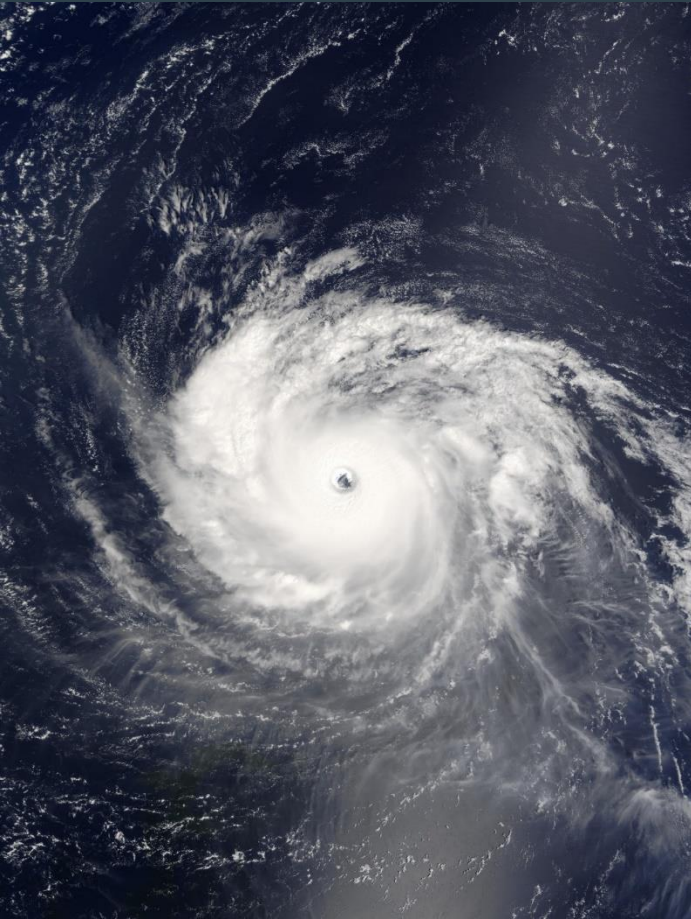
**High Scenario**  
*(least optimistic)*



Without Plan



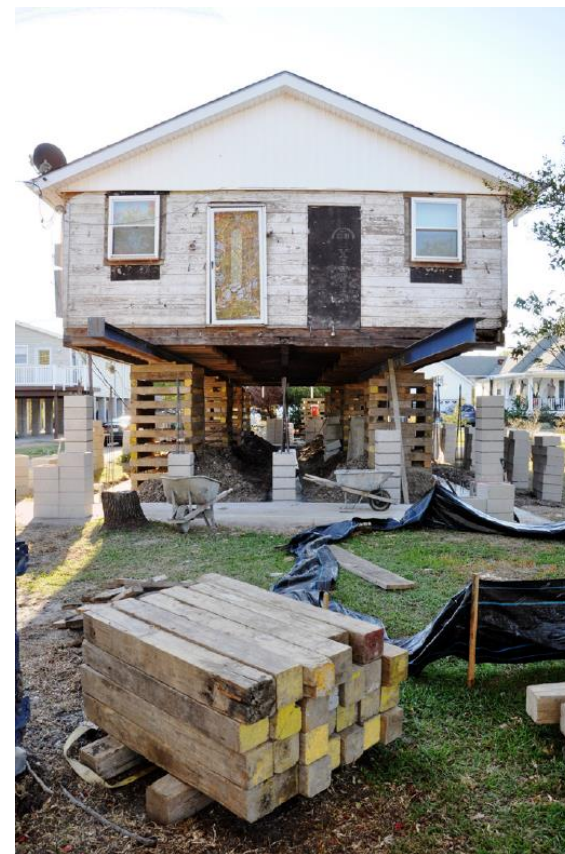
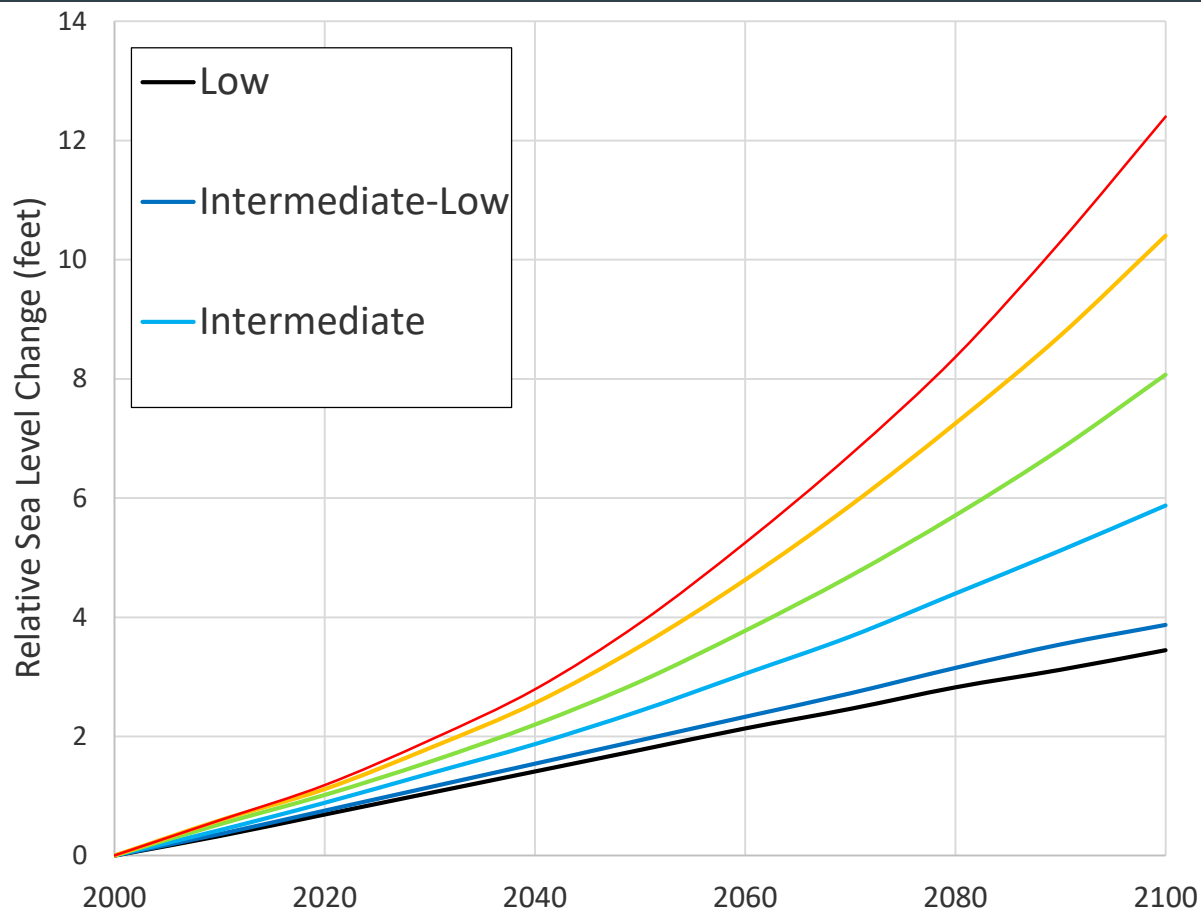
# We're used to responding to disasters



# Collaboration, Communication, Coordination



# Slower moving drivers of change



Data source: NOAA Technical Report NOS CO-OPS 083.



# A collection of rational decisions adding up to an irrational result

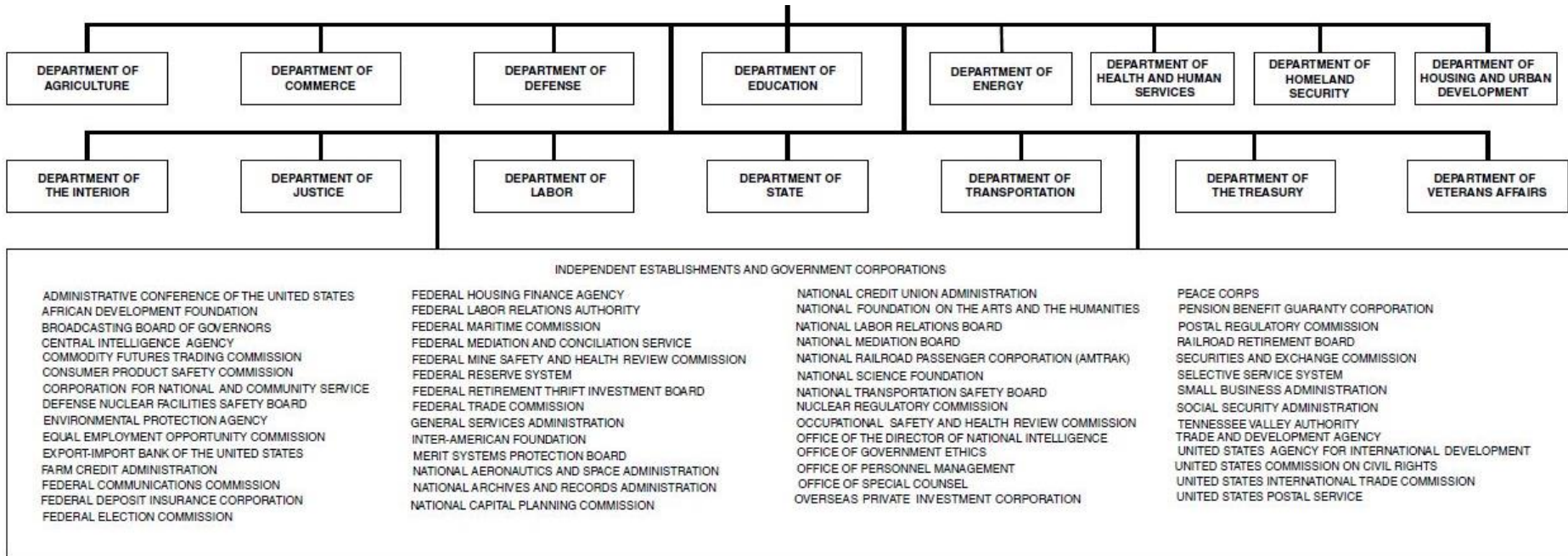


CPEX.org

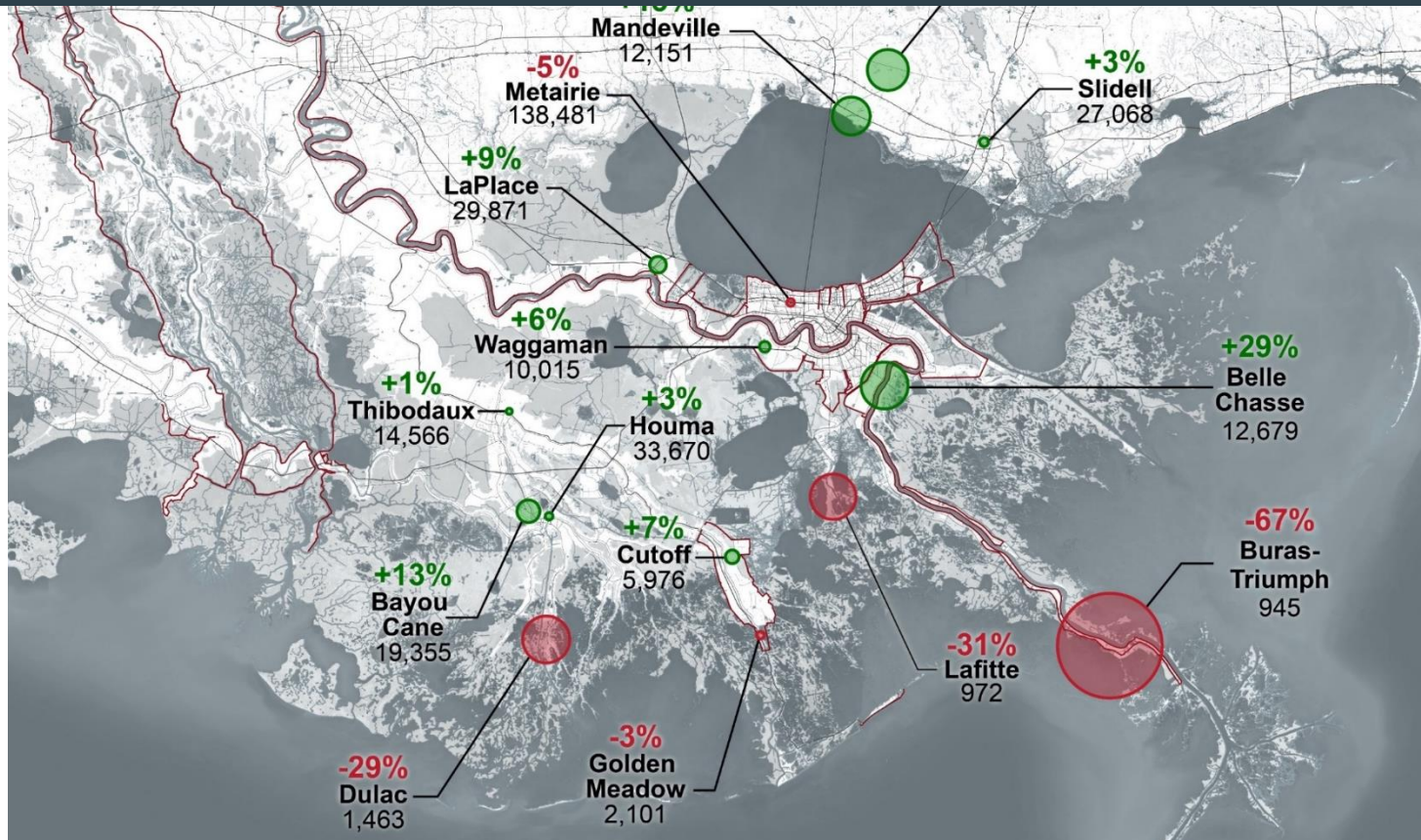


# Society requires stability in our institutions

## Adaptation requires flexibility

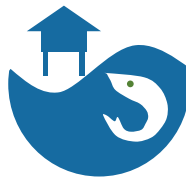


# Who should be thinking about the implications?



Data prepared by Esri, sourced from U.S. Census Bureau, Census 2000 Summary File 1 and Census 2010 Summary File 1.

Data prepared by Esri, sourced from U.S. Census Bureau, Census 2000 Summary File 1 and Census 2010 Summary File 1.



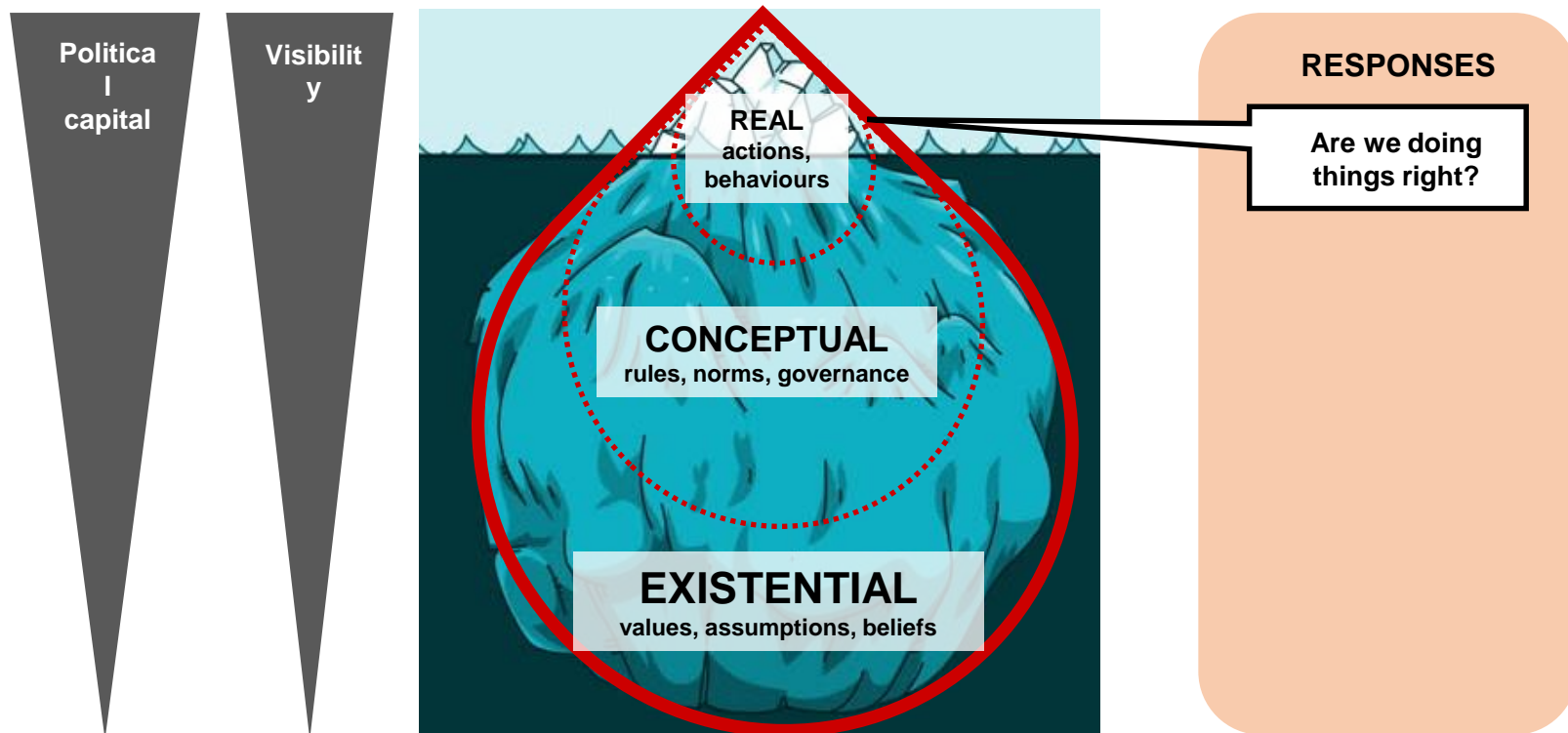
# Rethinking Government's Approach to Climate Adaptation Planning

## LA SAFE – Terrebonne Parish, LA Moderate Risk – 50 year vision



# Rethinking government's approach to adaptation planning

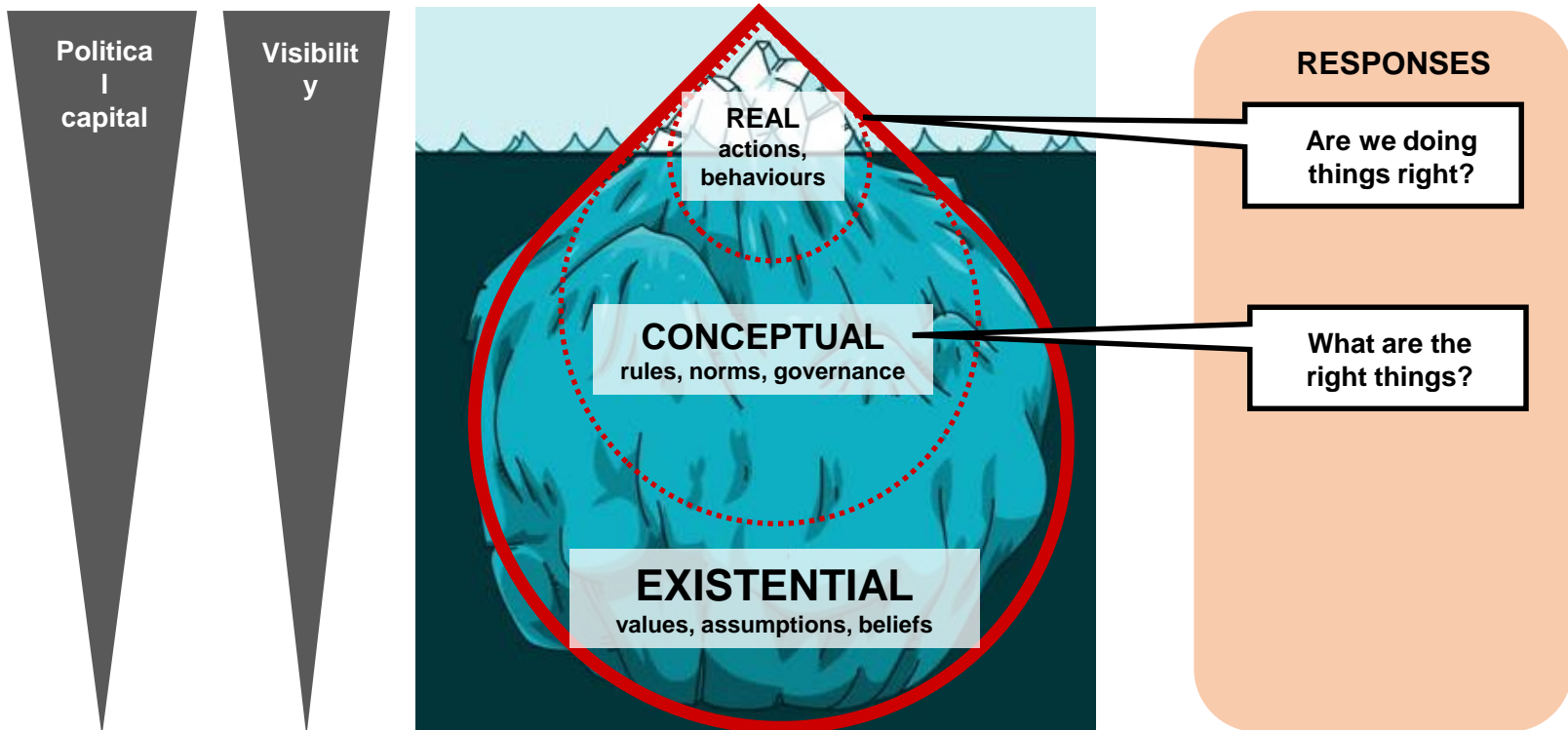
## The Three Emergencies



*James Butler, Ioan Fazey, Graham Leicester, Camille Manning Broome, Jeannette Dubinin*

# Rethinking government's approach to adaptation planning

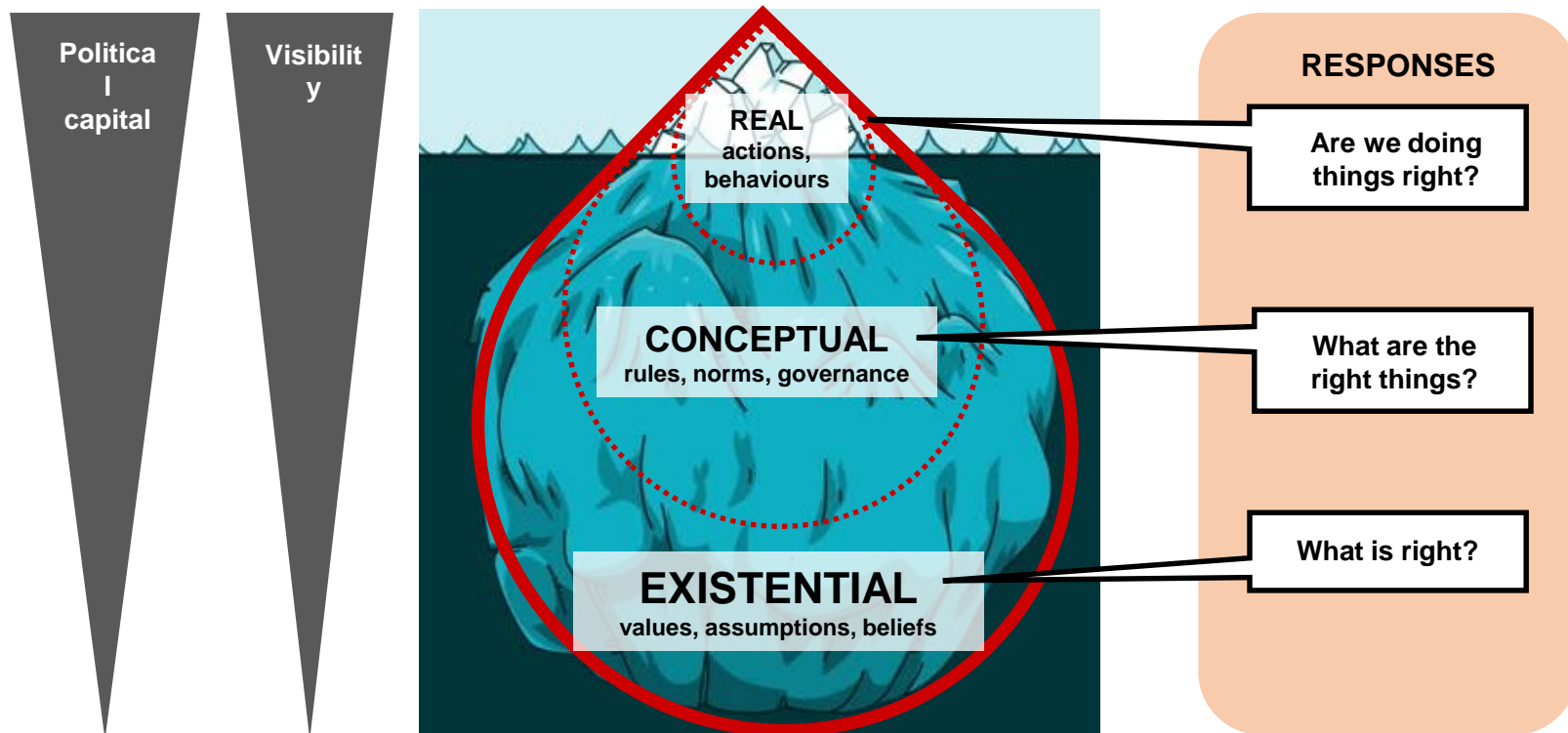
## The Three Emergencies



*James Butler, Ioan Fazey, Graham Leicester, Camille Manning Broome, Jeannette Dubinin*

# Rethinking government's approach to adaptation planning

## The Three Emergencies



*James Butler, Ioan Fazey, Graham Leicester, Camille Manning Broome, Jeannette Dubinin*



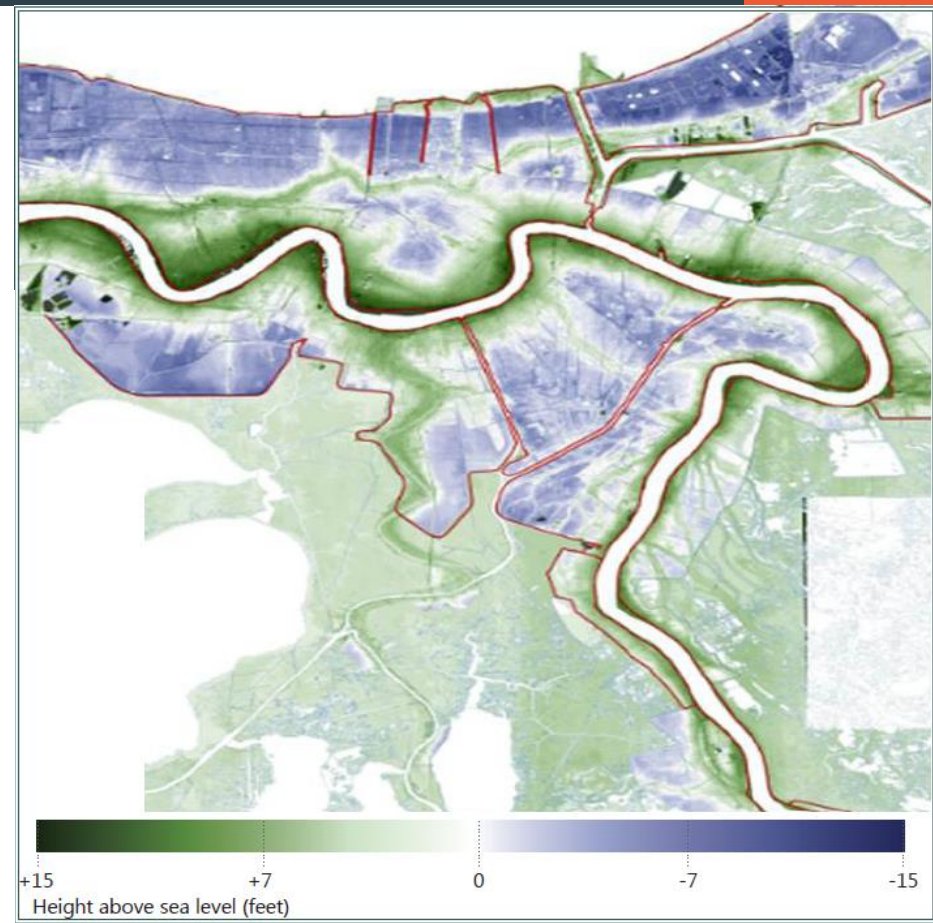
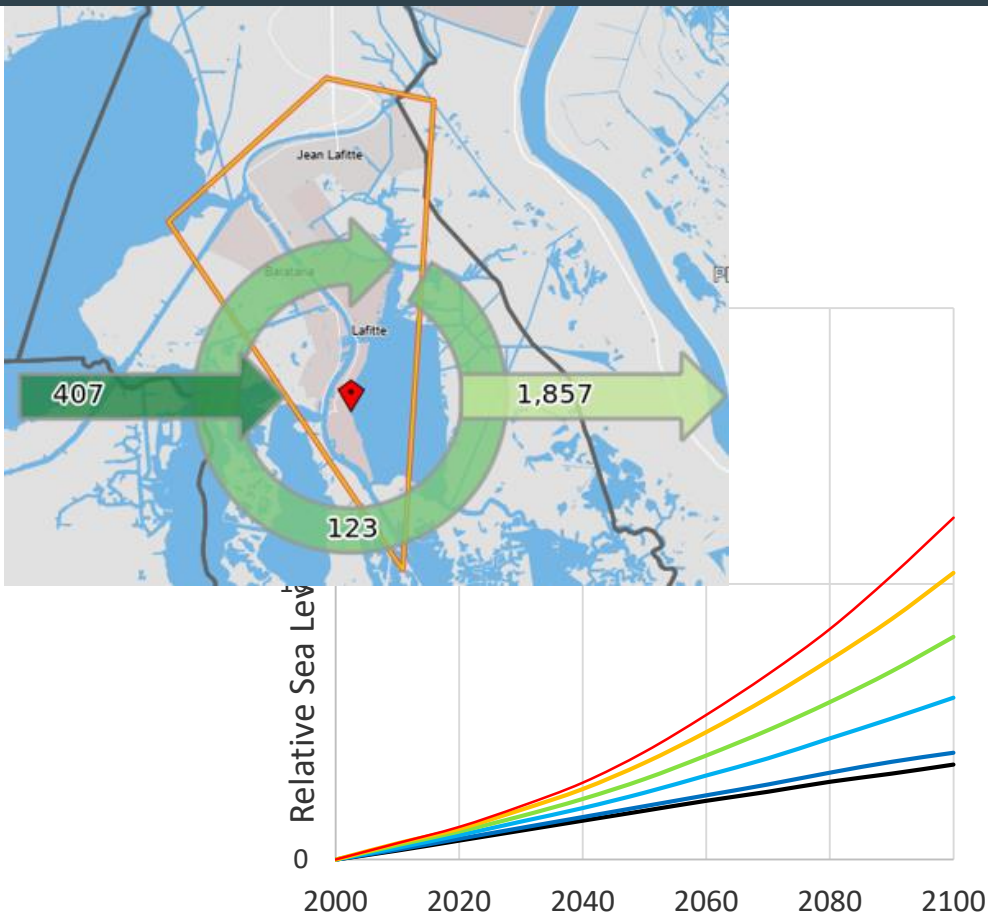


# What's next?

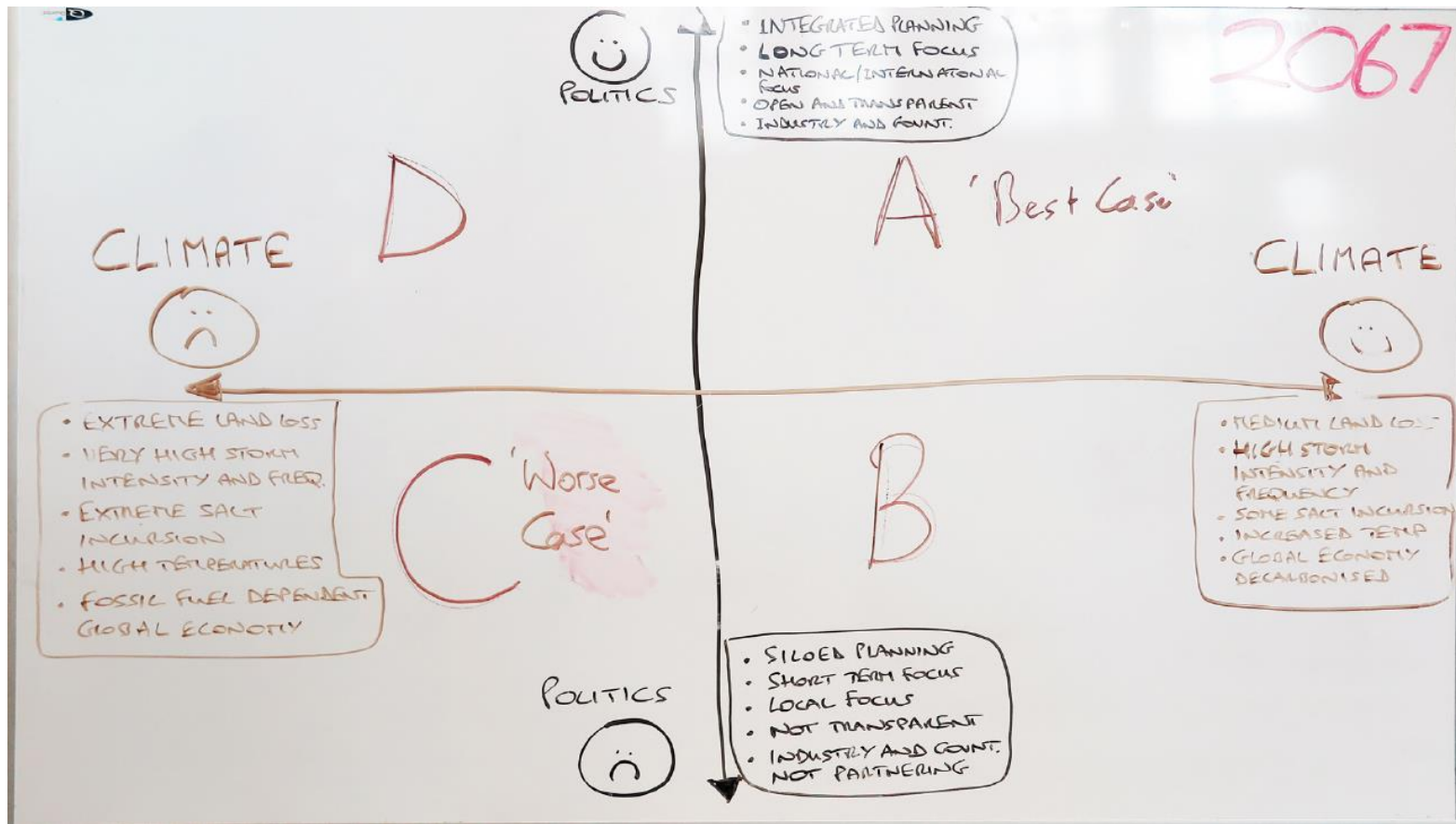
How do we incentivize big ideas like LA SAFE?



# Good Data and Modeling



# Start the Conversation



# Need to Build in Flexibility



# Leadership

