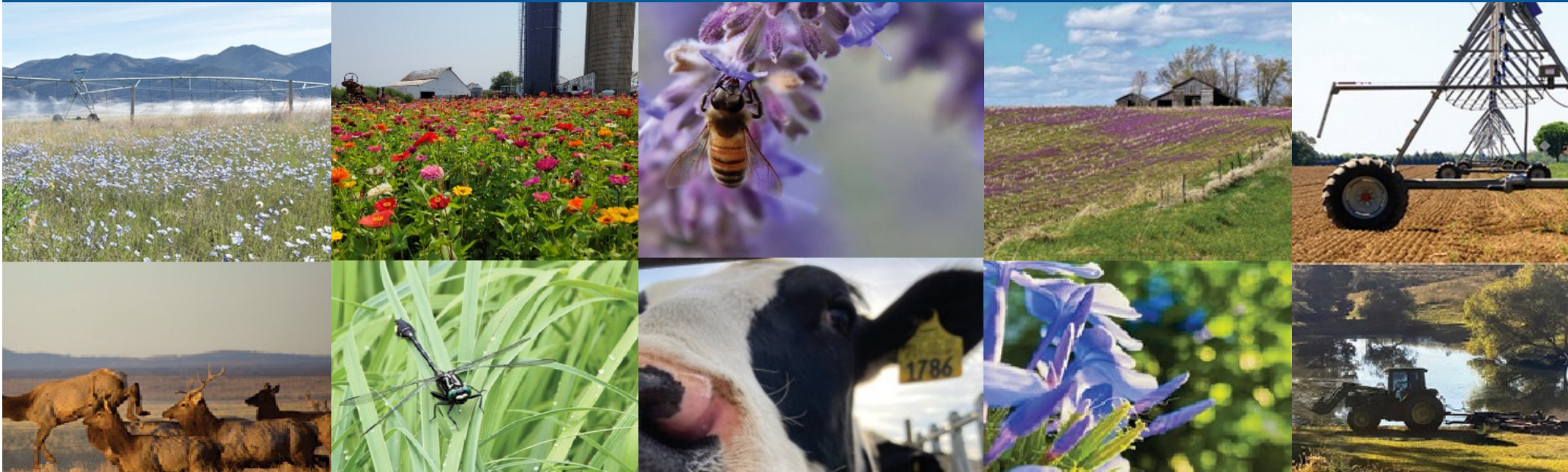




# National Association of Conservation Districts



 @nacdconserve

 @nacdconserve

 @nacdconserve

 @nacdconserve

[www.nacdnet.org](http://www.nacdnet.org)





**3,000** Conservation Districts in every state and territory

**17,000** individuals governing local district boards

To be effective, **conservation** must be:

- Locally led
- Voluntary
- Incentive based
- Economically viable



# RURAL COMMUNITIES



# URBAN COMMUNITIES



# COMMUNITY AG & FOOD SECURITY





# SOIL HEALTH











# WATER QUANTITY & QUALITY





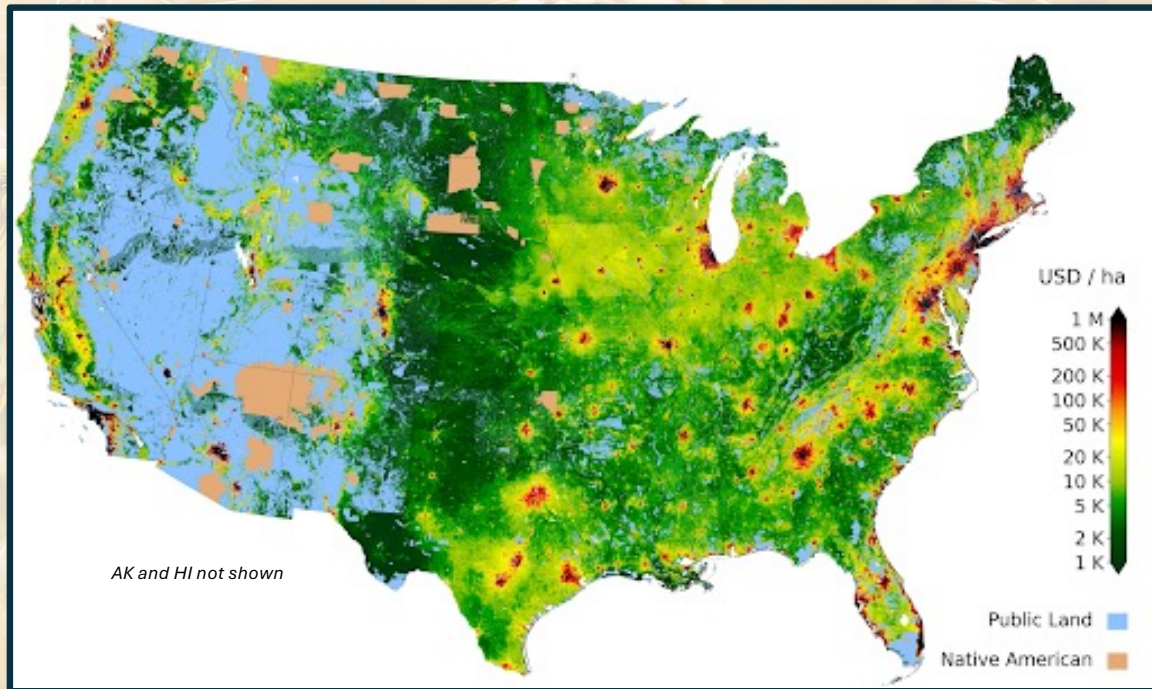
# ECOLOGICAL RESILIENCE



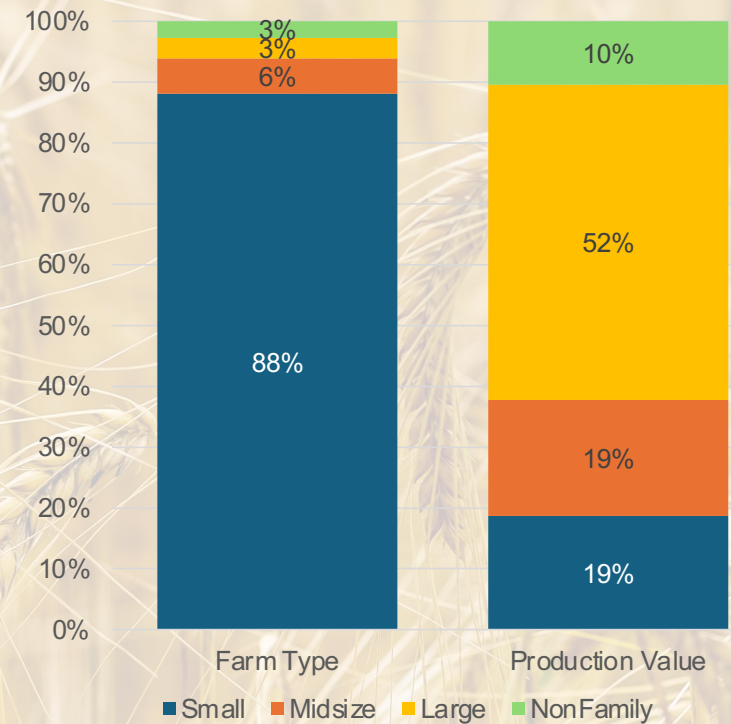


**~60% of US lands are privately owned<sup>1</sup>**

**~39% of U.S. land is farmland<sup>2</sup>**



**2022 Ag Census  
Farm Size vs. Production Value  
(% Total)<sup>2</sup>**

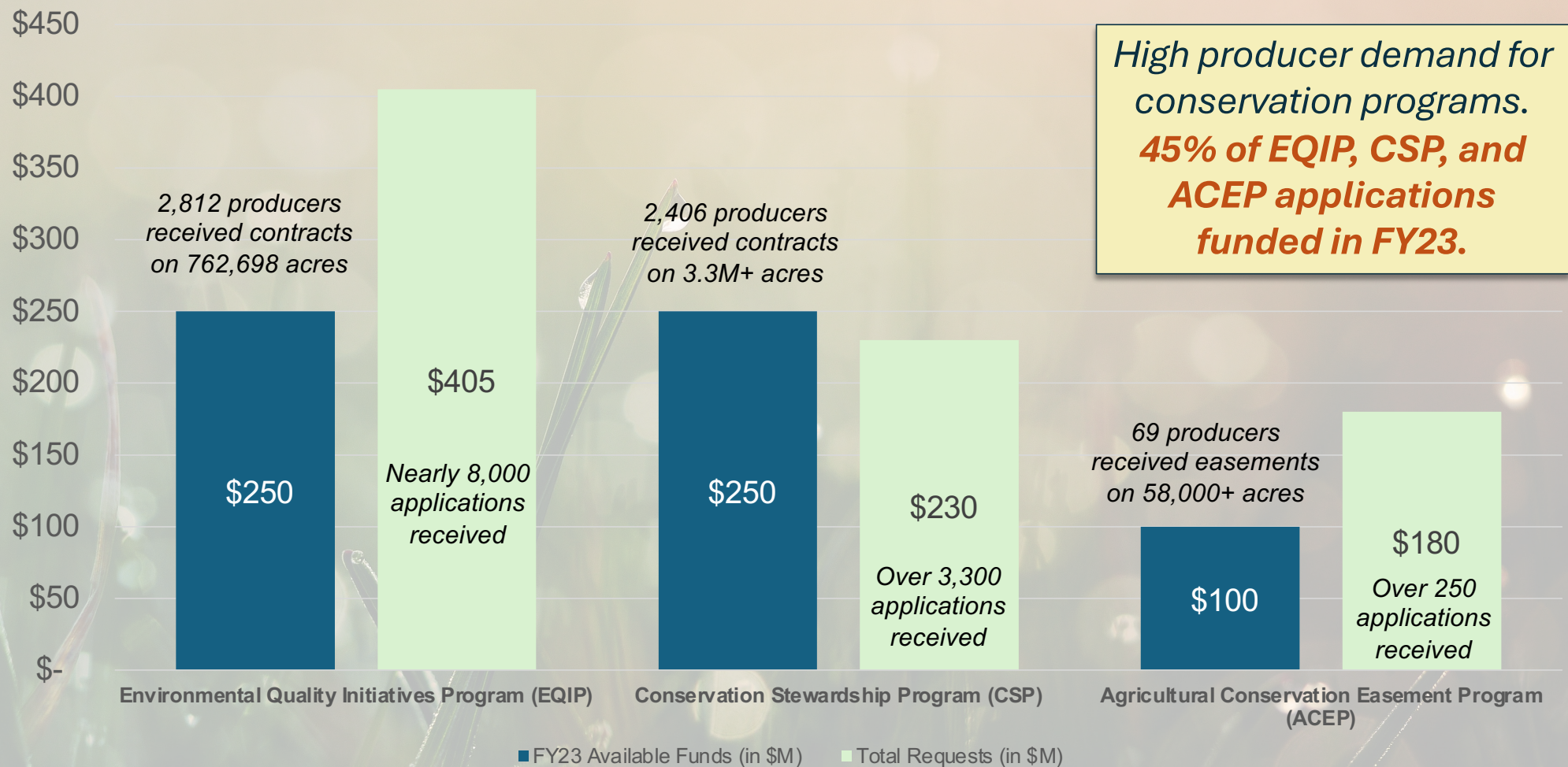


- **29.4%** of farmers are **new and beginner**
- **9%** of farmers are **<35 years old**

Sources:  
1) <https://ubique.americangeo.org/map-of-the-week/map-of-the-week-mapping-private-vs-public-land-in-the-united-states>  
2) <https://www.nass.usda.gov/Newsroom/2024/02-13-2024.php>



## FY23 Available IRA Funds vs. Demand<sup>3</sup>



<sup>3</sup>USDA NRCS IRA Data Visualization Tool – FY2023:

[https://publicdashboards.dl.usda.gov/t/FPAC\\_PUB/views/InflationReductionActDataVisualizationTool/IRAEndofYearReport?%3Aembed=y&%3AisGuestRedirectFromVizportal=y](https://publicdashboards.dl.usda.gov/t/FPAC_PUB/views/InflationReductionActDataVisualizationTool/IRAEndofYearReport?%3Aembed=y&%3AisGuestRedirectFromVizportal=y)



# NACD and the Soil Health Institute studied the economics of Soil Health Management Systems on 30 U.S. Farms

- Soil health practices increased net farm income by an average of \$65/acre
- Reduced expenses:
  - \$14/acre less to grow corn
  - \$7/acre less to grow soybean
  - \$16/acre less to grow other crops
- Yield Increases:
  - 42% of farms growing corn
  - 32% of farms growing soybean
  - 35% of farms growing other crops



## Conservation has additional economic benefits:

State	Best Quality Land Characteristics			Low Quality Land Characteristics		
	Ave. Corn Yield	Ave. Rent	Ave. Value per acre	Ave. Corn Yield	Ave. Rent	Ave. Value per acre
Indiana	221	\$306	\$13,739	165	\$212	\$8,689
Illinois	230	\$412	\$16,005	180	\$285	\$6,473
Iowa	212	\$328	\$14,296	161	\$232	\$7,664

<sup>1</sup><https://ag.purdue.edu/commercialag/home/paer-article/2024-farmland-and-cash-rent-outlook/> <sup>2</sup><https://ispfmra.org/download/2023-illinois-farmland-values-lease-trends-presented-at-2024-conference/>  
<sup>3</sup><https://www.extension.iastate.edu/agdm/wholefarm/pdf/c2-10.pdf>



**Long-term, market demand** for climate-smart commodities are needed in addition to Farm Bill programs.

**Conservation is a journey and investment.** It is not a transaction in return for ecosystem service credits.

**Producers need technical assistance and ongoing education.** There are no shortcuts.

**Conservation is profitable.** Producers need financial support and voluntary incentives to implement conservation systems of practices.





# Next-Gen Development

- Working Lands Climate Corps
- National Conservation Foundation Envirothon
- Next Generation Leadership Institute

