



EESI

Environmental and
Energy Study Institute

Materials will be available at:

www.eesi.org/032922fed

Tweet about the briefing:

#eesitalk @eesionline

CONGRESSIONAL BRIEFING

**Building a Durable National Framework for
Large Landscape Conservation**

**Briefing Series | Agencies in Action: Federal
Programs That Deliver Climate Mitigation and
Adaptation Benefits Every Day**

Tuesday, March 29, 2022

About EESI...



NON-PROFIT

Founded in 1984 by a bipartisan Congressional caucus as an independent (i.e., not federally-funded) non-profit organization



NON-PARTISAN

Source of non-partisan information on environmental, energy, and climate policies



DIRECT ASSISTANCE

In addition to a full portfolio of federal policy work, EESI provides direct assistance to utilities to develop “on-bill financing” programs



SUSTAINABLE SOCIETIES

Focused on win-win solutions to make our energy, buildings, and transportation sectors sustainable, resilient, and more equitable

Polycymaker Education

Briefings and Webcasts



Live, in-person and online public briefings, archived webcasts, and written summaries

Climate Change Solutions



Bi-weekly newsletter with everything policymakers and concerned citizens need to know, including a legislation and hearings tracker

Fact Sheets and Issue Briefs



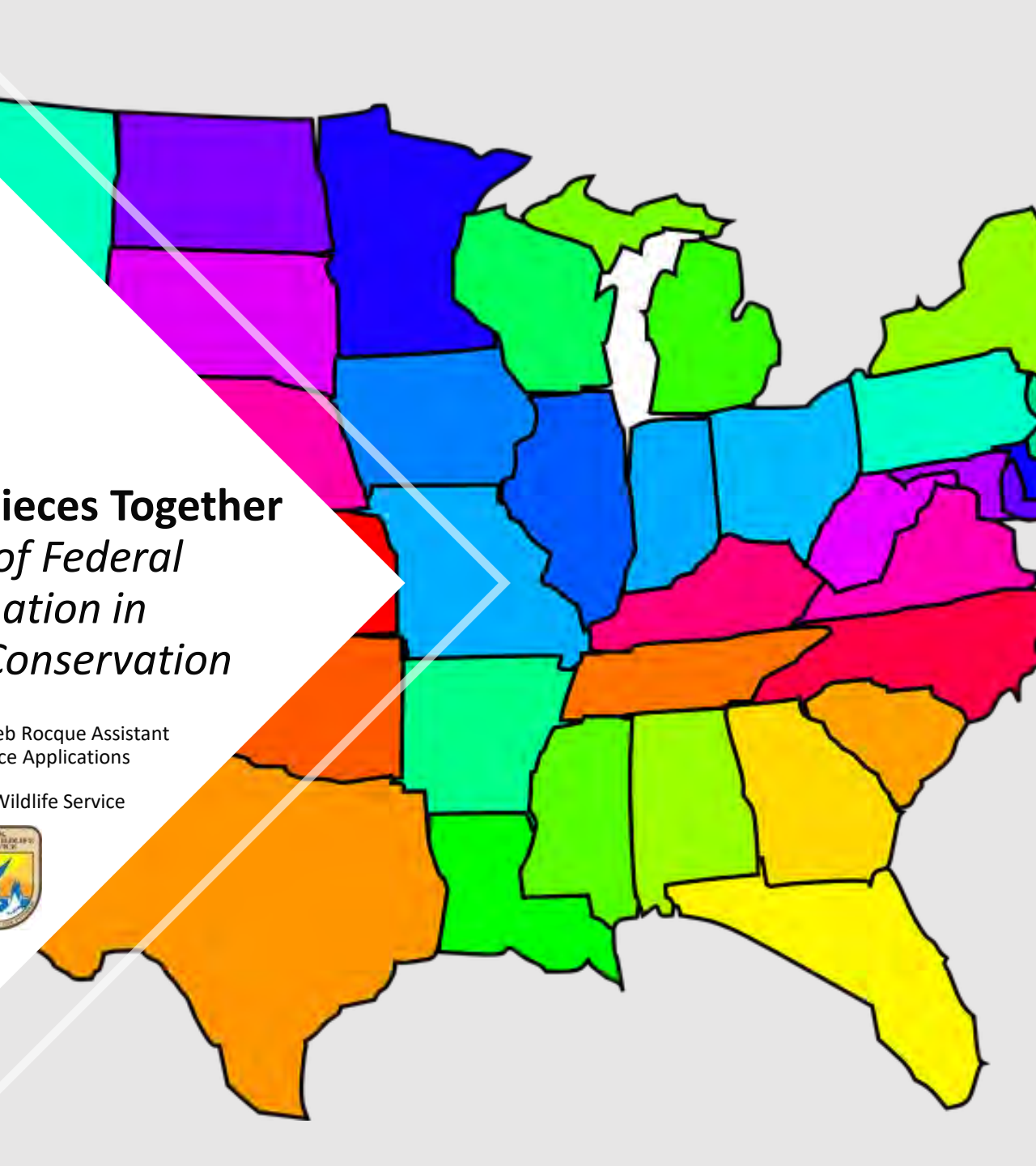

Timely, objective coverage of environmental, clean energy, and climate change topics

Social Media (@EESIOnline)



Active engagement on Twitter, Facebook, LinkedIn, and YouTube





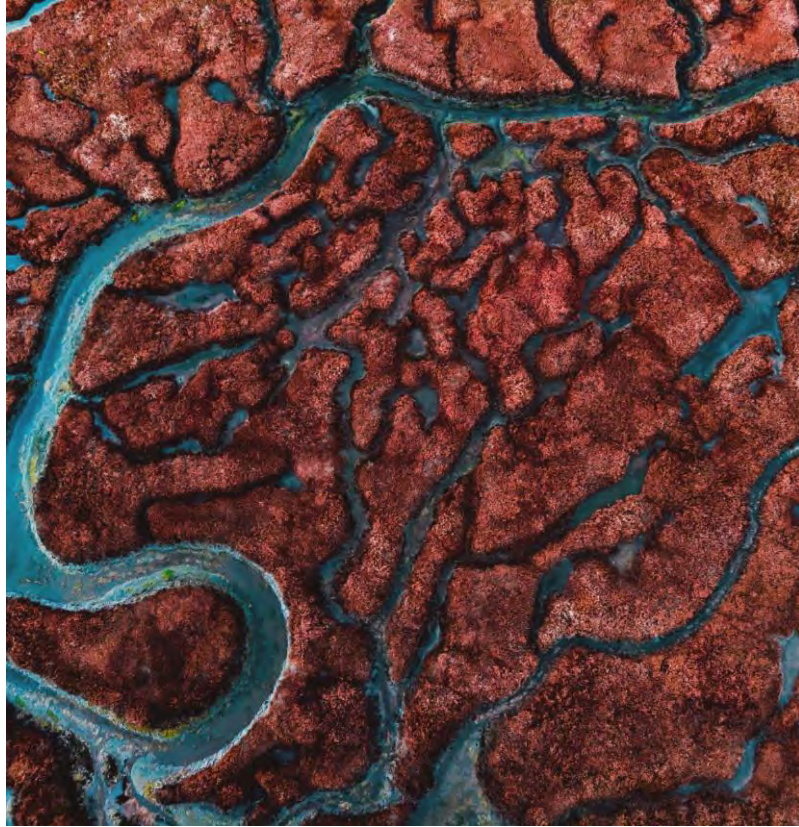
Stitching the Pieces Together

The Role of Federal Coordination in Landscape Conservation

Presented by Dr. Deb Rocque Assistant
Director, Science Applications

U.S. Fish and Wildlife Service

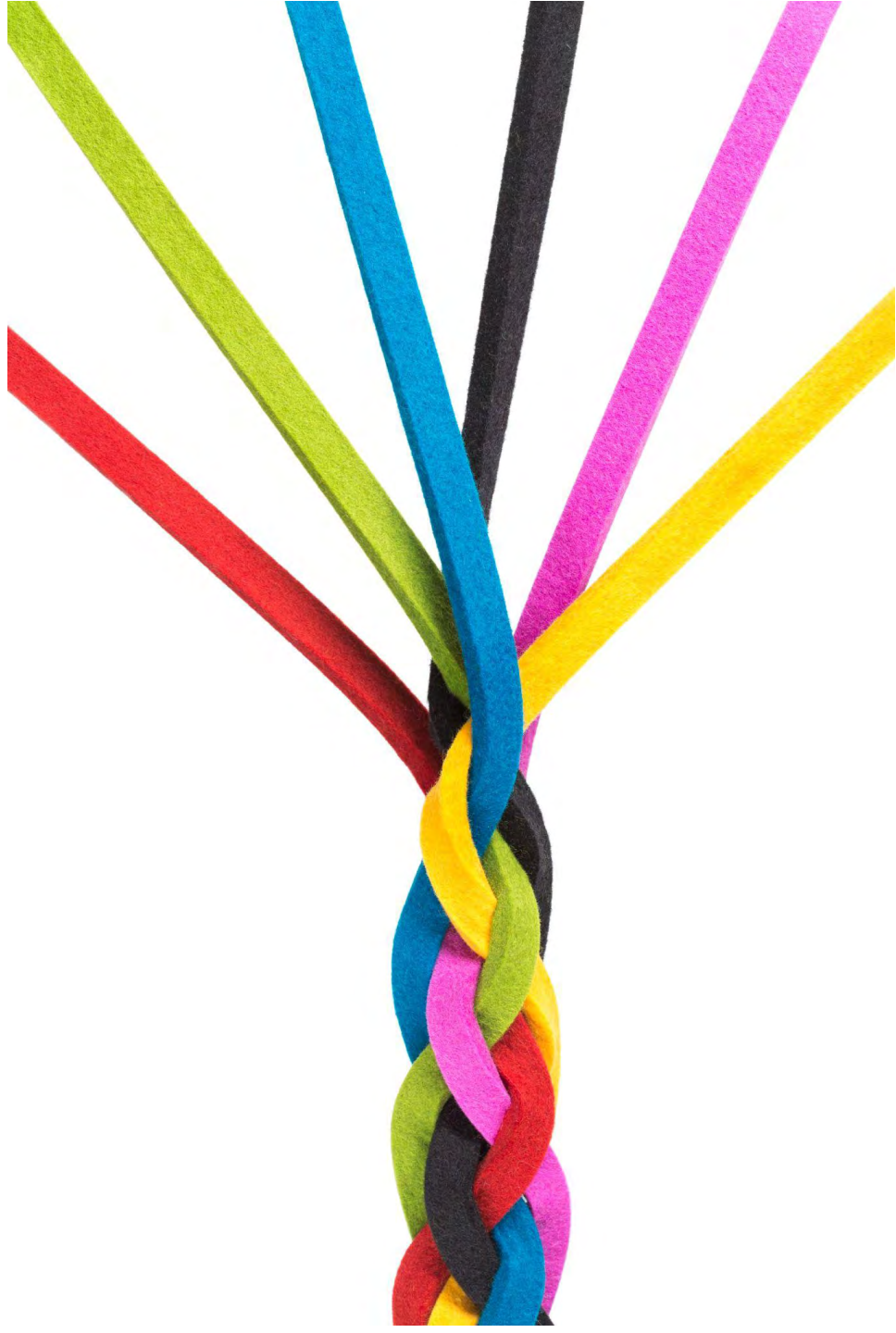




IT'S A LOT

Transformational Change



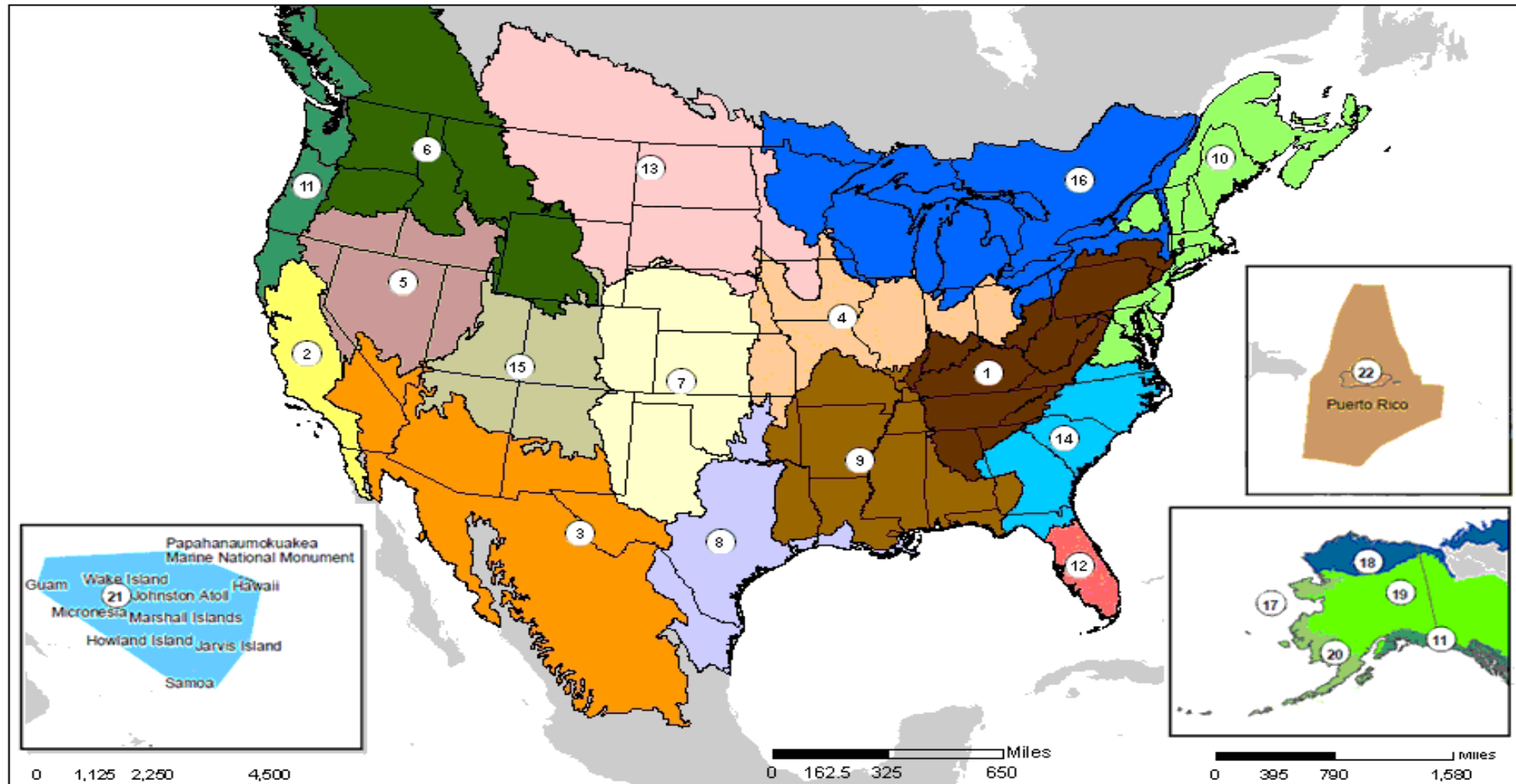


Science Applications

We are a non-regulatory program within the U.S. Fish and Wildlife Service that tackles landscape conservation issues no single Service program or partner can address alone.



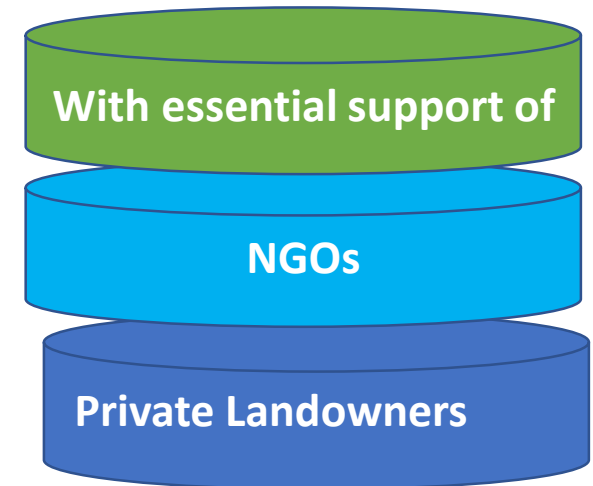
Landscape Conservation Cooperative Network



- | | | | |
|---|-----------------------------------|-------------------------------------|----------------------------------|
| 1. Appalachian | 7. Great Plains | 13. Plains and Prairie Potholes | 19. Northwestern Interior Forest |
| 2. California | 8. Gulf Coast Prairie | 14. South Atlantic | 20. Western Alaska |
| 3. Desert | 9. Gulf Coastal Plains and Ozarks | 15. Southern Rockies | 21. Pacific Islands |
| 4. Eastern Tallgrass Prairie and Big Rivers | 10. North Atlantic | 16. Upper Midwest and Great Lakes | 22. Caribbean |
| 5. Great Basin | 11. North Pacific | 17. Aleutian and Bering Sea Islands | Unclassified |
| 6. Great Northern | 12. Peninsular Florida | 18. Arctic | |



Wildlife Conservation in the United States



OH, IT DIDN'T WORK



STILL A GOOD IDEA, THOUGH



U.S. Fish and Wildlife Service and States: Recent Accomplishments



ASSOCIATION of
FISH & WILDLIFE
AGENCIES



- AFWA resolution on Landscape Conservation
- AFWA President's Task Force on Shared Science and Landscape Conservation Priorities
- State Wildlife Action Plan framework to enhance landscape conservation
- Landscape Conservation Joint Task Force





U.S. Fish and Wildlife Service and Tribes: Recent Accomplishments



- Future of Conservation Forum
- Zoonotic Disease Initiative
- Supporting the hiring of wildlife biologists by the Native American Fish and Wildlife Society
- Grants to states, Tribes, territories in IJA



Collaborative Conservation is Complicated

50 States in 4
AFWA Regions

8 USFWS Regions

574 Recognized
Tribes

18 Joint
Ventures/20 Nat'l
Fish Habitat
Partnerships

Almost 15,000
NGOs

Private Landowners

Other Federal
Agencies

Local Communities

Role of the Federal Gov't – Weaving it Together

- **Coordination at Multiple Scales**
- **Common Processes**
- **Consistent Data/Science**
- **Funding**



- **A National Framework**



A National Framework Defined

- A durable approach that brings people together across geographies and cultures to address shared conservation challenges by creating a network of healthy lands and waters where fish, wildlife, plants and people thrive.

Or

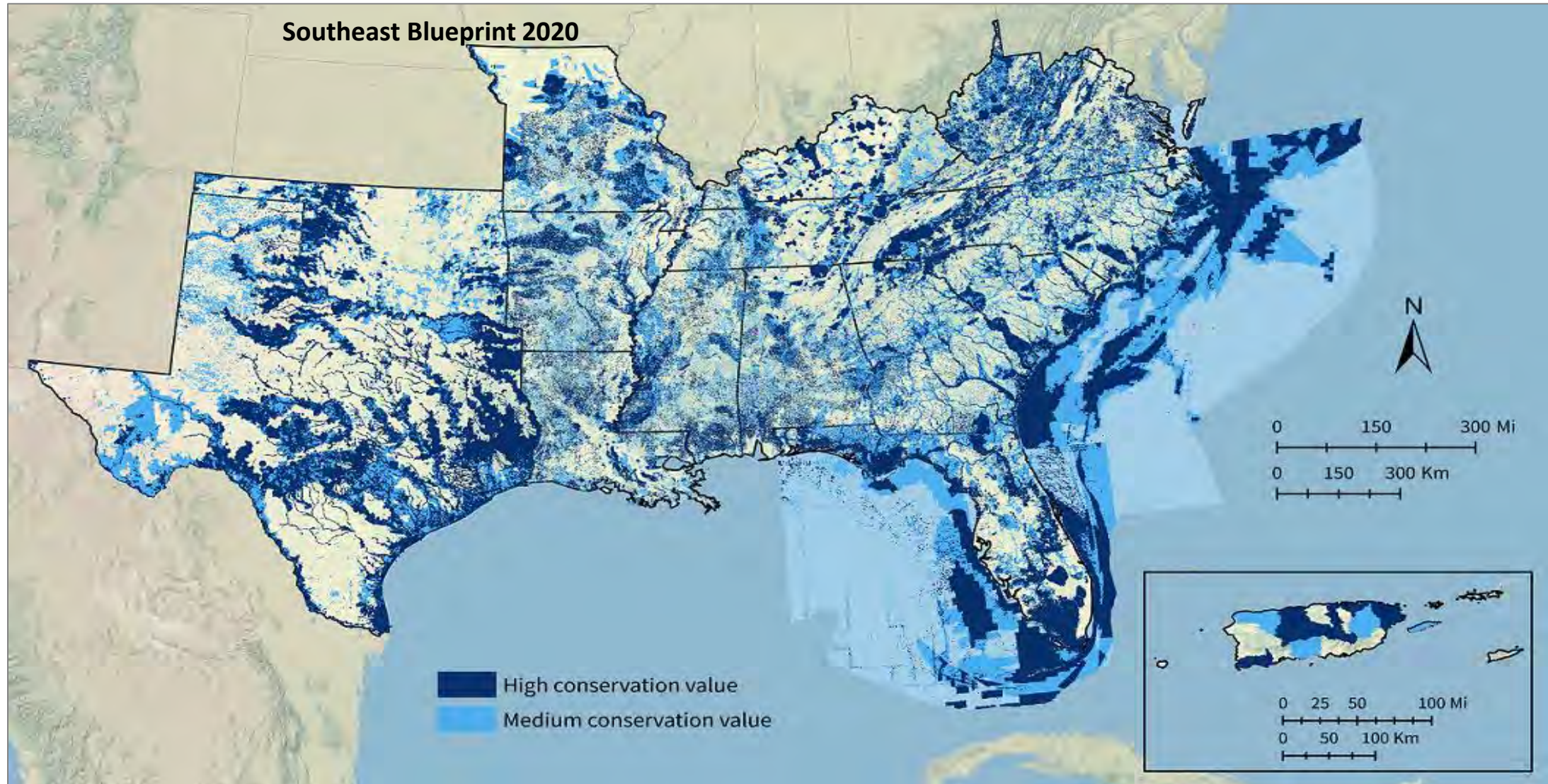
- A durable way of doing business that strategically targets capacity and resources to connect and conserve high priority landscapes/ecosystems

Example from SECAS – A Bold Vision

A **connected network** of lands and waters that supports thriving fish and wildlife populations and improved quality of life for people



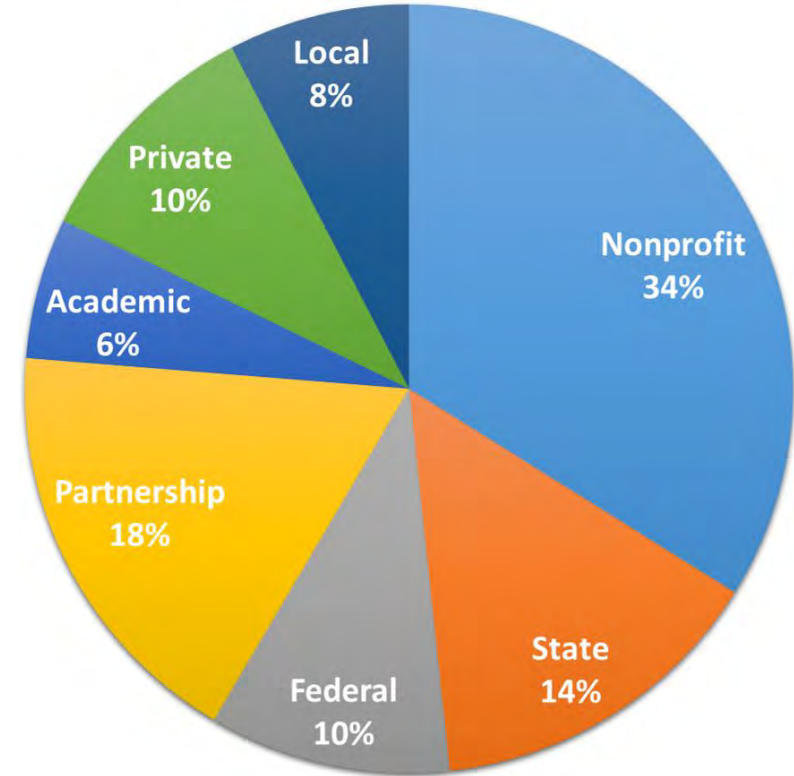
The Southeast Conservation Blueprint



How is the Blueprint being used?

The Blueprint is helping people from more than 100 organizations:

- 17 state agencies
- 8 land trusts
- 12 federal agencies
- 9 local governments and planning organizations
- 32 nonprofits
- 21 conservation partnerships
- 12 private businesses
- 7 universities and academic organizations



Number of organizations using the Blueprint as of July 2021

Final Thoughts on a National Framework

- **Provides Consistency across Jurisdictions**
- **Identifies Highest Conservation Priorities at a National Scale**
 - **Drives Federal (Cross-Departmental) Investments**
- **Is Scalable**
 - **Allows for Local Input, Focus, and Prioritization**
- **Brings Partnerships Together to Determine Outcomes/Timeframes**
- **Drives Collaboration**
- **Healthy Landscapes, Healthy People, Healthy Communities**



BUILDING A DURABLE NATIONAL FRAMEWORK FOR LARGE LANDSCAPE CONSERVATION

JULIE THORSTENSON, PHD – EXECUTIVE
DIRECTOR

ENVIRONMENTAL AND ENERGY STUDY
INSTITUTE

3/29/22

NAFWS

- 501(c)(3) Nonprofit - 1983
- MISSION

Assist Native American and Alaska Native Tribes with the conservation, protection, and enhancement of their fish and wildlife resources.



MEMBERSHIP ORGANIZATION

- 7 Regions
- 227 Support Tribes
- Individual Membership
- Conservation Officers, Biologists, Technicians, etc.
- Tribal, Federal, State, Non-Governmental Organizations, Private, students, etc.



-
- 574 Federally Recognized Tribes in the U.S.
 - 109 in California
 - 229 in Alaska
 - Sovereign Nations – inherent authority of indigenous tribes to govern themselves within the U.S.





TRIBAL FISH AND WILDLIFE PROGRAMS

Tribes own or influence the management of nearly 140 million acres

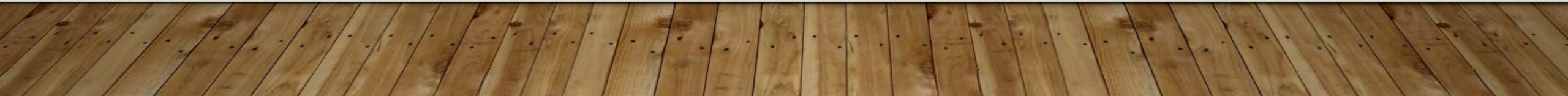
Key Biodiversity Areas' Overlap with US Native Lands

“While tribal lands make up 2.6% of the United States, they overlap with 12% of Key Biological Areas.”



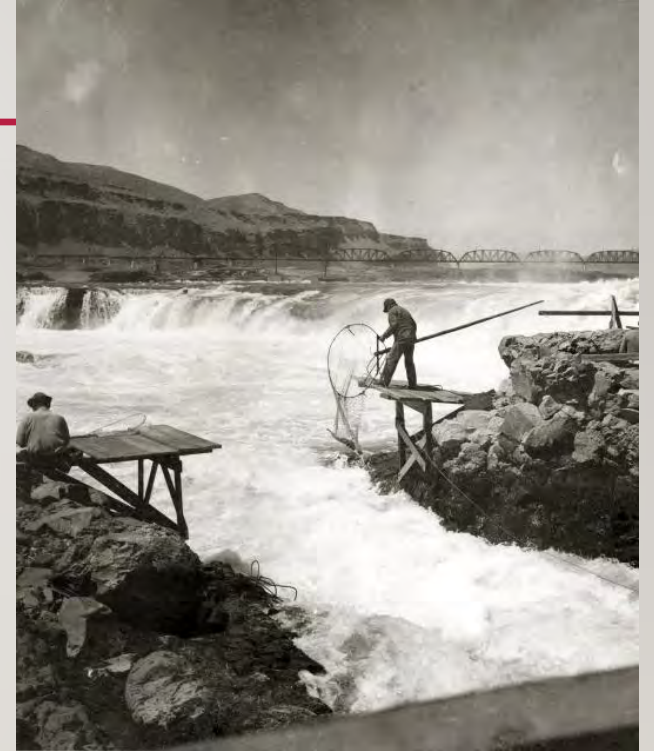
DIVERSITY WITHIN TRIBAL FISH & WILDLIFE PROGRAMS

- Land Base
- Land Status
- Longevity of Programs
- Complexity of Programs
- Staffing
- Authorities/Jurisdiction



TRIBAL FISH AND WILDLIFE PROGRAM FUNDING

- Excluded from Excise Taxes (PR/DJ)
- PL 93-638 funding – **Inadequate**
- Tribal Wildlife Grants – TWG
 - TWG vs. SWG -**Inequitable**
- Hunting and Fishing License Revenue
- Other Tribal funds
- Grants



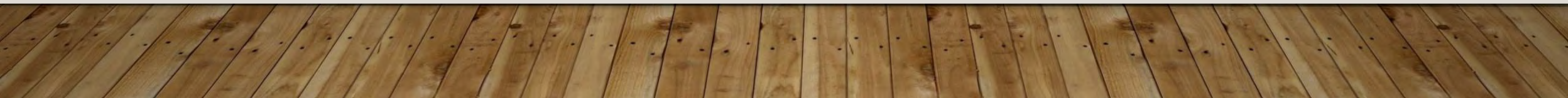
PITTMAN ROBERTSON/DINGELL/JOHNSON – INEQUITY

FY 2021 Distribution for lower 48 States:

TOTAL **\$1,018,923,252.00**

TRIBES RECEIVED **0**

Tribal lands (3.65%) accounted for: **\$37,190,699.00**



TRIBAL ENGAGEMENT - CHALLENGES

- Lack of capacity
- Other Tribal Priorities
- State-Tribal Relations
- Contradicting management goals
- Connecting with the right person
- Benefits for Tribes?

TRIBAL ENGAGEMENT - OPPORTUNITIES

- Management of the same species
- Include cultural importance
- Recognize TEK (Traditional Ecological Knowledge)
- State Wildlife Action Plans
- Provide Technical Assistance for Tribal Wildlife Action Plans
- Recovering America's Wildlife Act



WORKING WITH TRIBES

- 574 *UNIQUE* Tribal Nations
- Build relationships
 - Know the key people
- Take your time
- Existing pathways
- Partner with Intertribal Organizations





NOBODY TELLS OUR STORY BETTER THAN US



NATIVE AMERICAN FISH &
WILDLIFE SOCIETY

**39TH ANNUAL NATIONAL
CONFERENCE**

Hosted by Miccosukee Tribe

**CALL FOR
ABSTRACTS &
STUDENT POSTERS**

May 9-12, 2022
Miccosukee Resort & Casino, Miami, FL

DUE MARCH 18, 2022 AT 10PM MT

QUESTIONS?

Visit: www.nafws.org

- News in tribal conservation
- Job postings and youth programs
- Funding opportunities

For quarterly updates subscribe to the **Eagle's Nest Newsletter**

Email – JThor@nafws.org



NAFWS



@native_wildlife



NAFWS_insta



**Native American
Fish & Wildlife
Society**



The Role of NGOs in Promoting Locally-Led, Nationally-Scaled Collaborative Conservation

Anna Wearn
Director of Government Affairs
anna@largelandscapes.org



CENTER
for
**LARGE LANDSCAPE
CONSERVATION**

The Role of NGOs in Promoting Locally-Led, Nationally-Scaled Collaborative Conservation

1. *On-the-Ground Action: Supporting, Catalyzing, and Connecting Partnerships*
 - a. Supporting existing partnerships
 - b. Catalyzing new partnerships and initiatives
 - c. Creating networks of partnerships

2. *Visionary Action: Advancing a Durable and Inclusive National Landscape Conservation Framework*
 - a. Convening and participating in dialogues
 - b. Developing and advancing policy recommendations
 - c. Advocating for robust, sustainable funding

What is large landscape conservation and why is it important?



Recognizing women in landscape-scale conservation

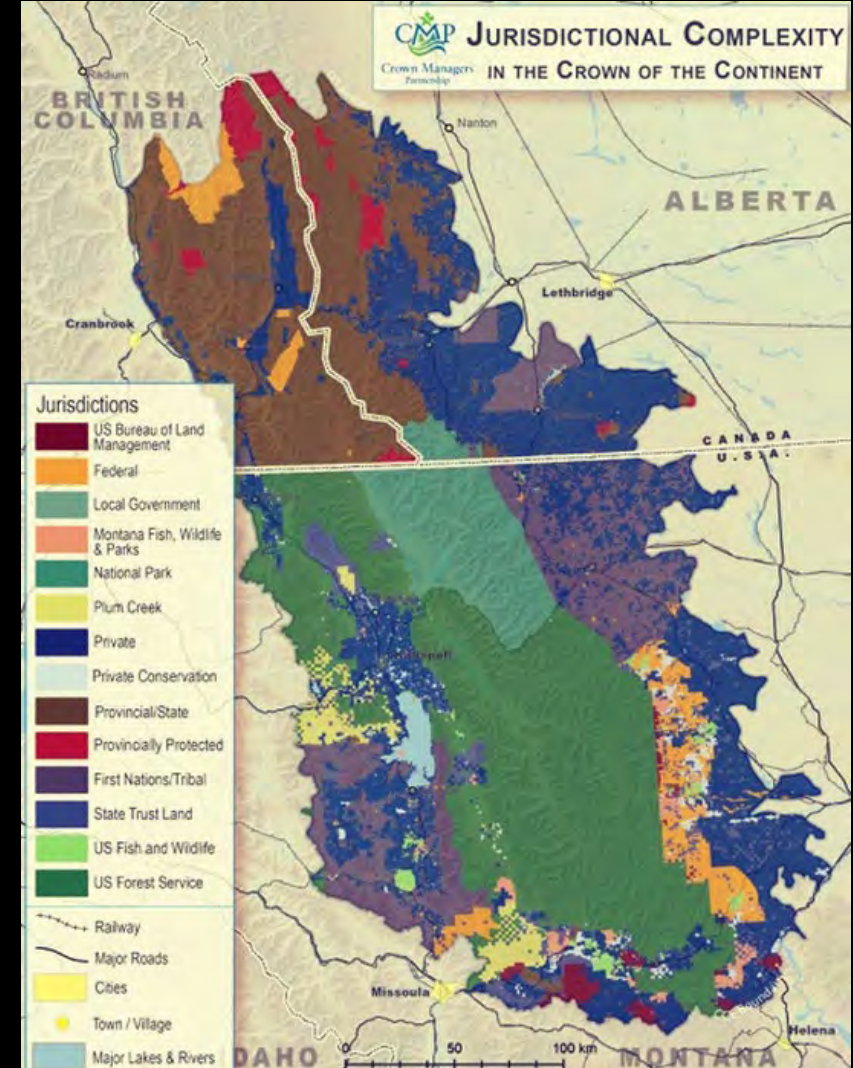
NPS Connected Conservation



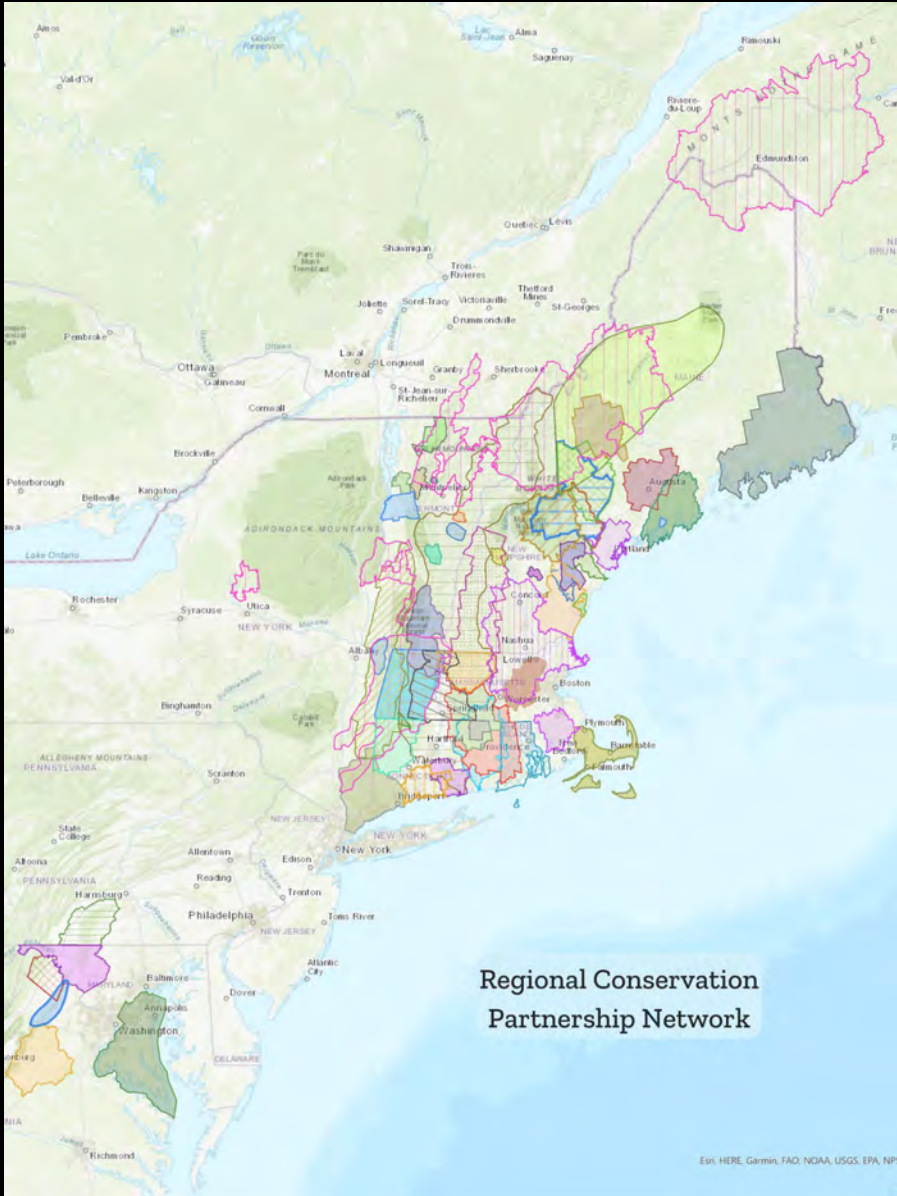
Supporting partnerships and catalyzing new initiatives



Lawler et al. 2015. Animation: Dan Majka, TNC



Creating networks of partnerships



The screenshot shows the homepage of the Network for Landscape Conservation. The header includes the organization's logo and navigation links: ABOUT, CATALYST FUND, OUR WORK, KNOWLEDGE CENTER, NEWS, BECOME A PARTNER, and DONATE. A central menu lists resources: RESOURCES LIBRARY, INITIATIVES DATABASE, PERSPECTIVES: LANDSCAPE CONSERVATION IN ACTION, LANDSCAPE CONSERVATION WEBINAR SERIES, JOBS AND OPPORTUNITIES, and BULLETIN ARCHIVE. The main content area features an aerial photograph of a rural landscape with a large field and a river, overlaid with the text: **Advancing Conservation at Scale** and *The Network for Landscape Conservation advances cross-border, collaborative conservation as a vital approach to sustain nature, culture, and community.*

Convening dialogues and developing policy recommendations

Next Generation of Landscape Conservation Dialogues

- **Guiding Principles**

- Ensure inclusivity and equity.
- Promote collaboration and coordination between federal, state, tribal, and local partners.
- Provide long-term, reliable funding that leverages public-private partnerships.
- Integrate climate resilience and biodiversity conservation efforts.
- Recognize geographic differences and employ a bottom-up approach.

- **Preliminary Policy Recommendations**

- Establish a body or convening structure to coordinate federal landscape-scale conservation and climate resilience efforts.
- Establish a diverse advisory body including non-federal stakeholders to guide implementation.
- Develop legislation to establish long-term, reliable support for a nationwide network of landscape conservation collaboratives, including funding for science, conservation, and collaborative capacity.
- <https://largelandscapes.org/wp-content/uploads/2021/04/Build-back-a-better-National-Landscape-Conservation-Framework.pdf>

Convening dialogues and developing policy recommendations

Future of Conservation Forum

- **Speakers**
 - USFWS, USGS, and DOI leadership
 - NAFWS and AFWA leadership
 - Private landowners and business interests
 - NGO leaders
- **Topics**
 - Collaboration
 - Private lands
 - Biodiversity
 - Climate change
 - Urban landscapes
 - Coordination across governments
 - Integrating science and traditional ecological/indigenous knowledge
- **Overarching need**
 - Weave together efforts and create decision support tools for strategically and collaboratively prioritizing conservation actions and investments.
- **Cross-cutting needs**
 - Inventory existing efforts, partnerships, and lessons learned.
 - Build trust and collaborative capacity to cooperate across jurisdictions and scales.
 - Increase equity, inclusion, and outreach.
 - Secure more robust and sustainable funding.

Convening dialogues and developing policy recommendations




WHAT WE DO ABOUT EVENTS STORIES




2021 Virtual Symposium on Conservation Impact



Sponsored by



US – Canada Transboundary and Indigenous-led Conservation of Nature and Culture
Priority Recommendations



Advocating for robust, sustainable funding

Budget & Appropriations

- **FY22 omnibus appropriations legislation**
 - \$12.5M for Cooperative Landscape Conservation Program
 - Critical funding, but half of level when established and ~\$6.5M less than requested
 - USFS collaborative capacity grants
- **FY23 landscape conservation/resilience funding requests**
 - Interagency (DOI)/interdepartmental
 - DOI-USDA-WGA Collaborative Conservation Task Force
 - Wildland Fire Management Program
 - American Conservation and Stewardship Atlas
 - Land and Water Conservation Fund
 - USFWS
 - Science Applications Program
 - Cooperative Landscape Conservation (\$19M) & Science Support
 - Migratory Bird Joint Ventures Program
 - National Fish Passage Program
 - Partners for Fish and Wildlife Program & Coastal Program
 - BLM
 - Landscape and habitat connectivity initiatives
 - NPS
 - Large-scale wildlife conservation initiatives
 - BIA
 - Tribal Climate Resilience Program
 - USGS
 - Climate Adaptation Science Centers
 - Coastal/Marine Hazards and Resources Program
 - Cooperative Research Units
 - NRCS
 - Conservation Technical Assistance Program
 - Farm Bill Program
 - USFS
 - Collaborative Forest Landscape Restoration Program
 - State and Private Forestry Programs
 - NOAA
 - National Estuarine Research Reserves

Advocating for robust, sustainable funding

Infrastructure Law

- **DOT: *Habitat Connectivity***
 - Wildlife Crossings Pilot Program
 - Federal Lands Transportation Program
 - Federal Lands Access Program
 - Surface Transportation Block Grant Program
 - Nationally Significant Freight and Highway Projects Program
 - Bridge Investment Program
 - National Culvert Removal, Replacement, and Restoration Grant Program
 - PROTECT & INFRA Programs
- **USDA & DOI: *Ecosystem Restoration***
 - Joint Chiefs Landscape Restoration Partnership Program
 - Forest Service Legacy Road and Trail Remediation Program
 - Community Wildfire Defense Grants
 - Collaborative Forest Landscape Restoration Program
 - Collaborative-based, Aquatic-focused, Landscape-scale Restoration Program

Advocating for robust, sustainable funding

Coordinating and Leveraging Federal Investments: Existing Models and New Opportunities

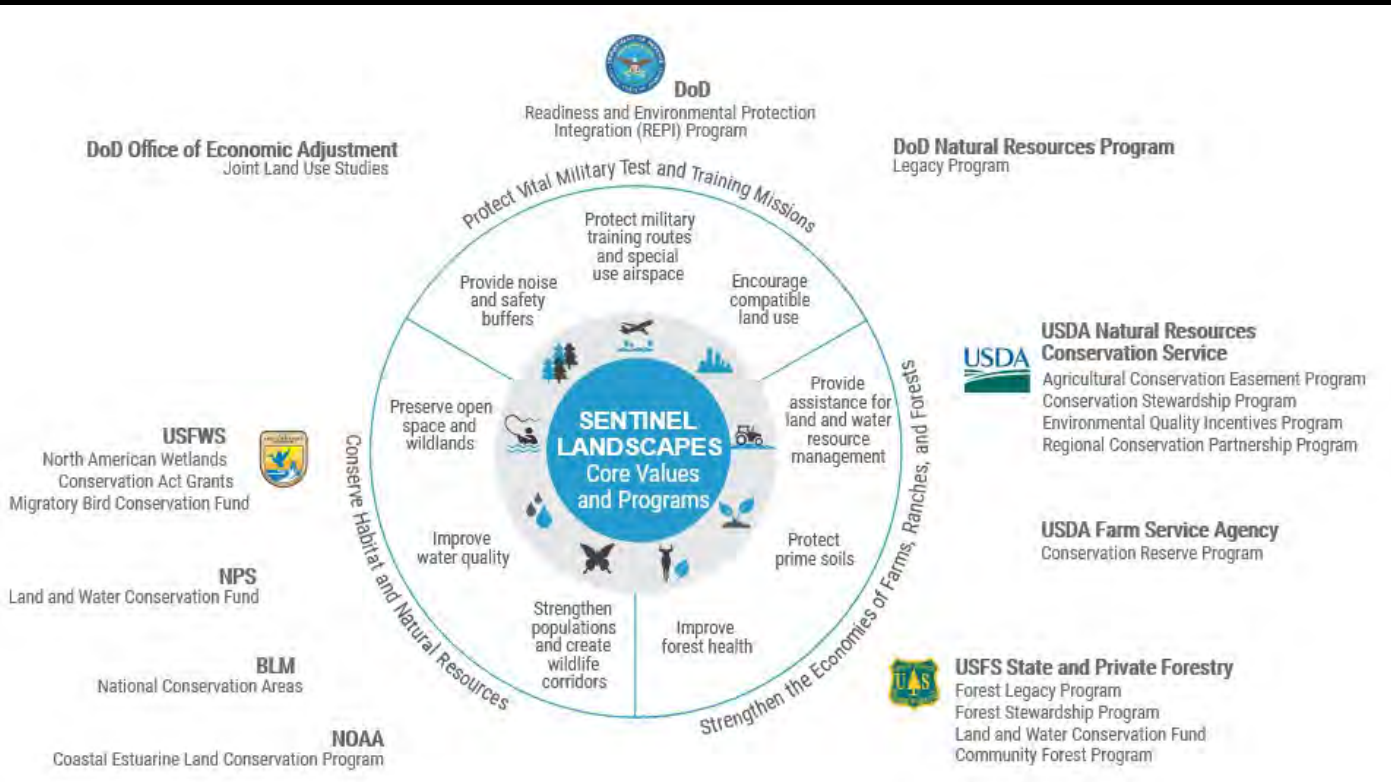
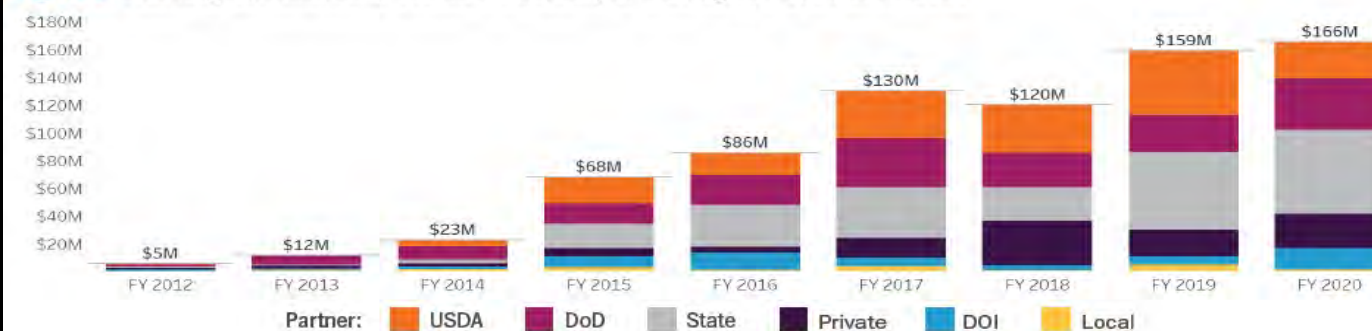


Figure 2: Funding Committed to Sentinel Landscapes Through FY 2020 in Millions





Landscape Conservation

The Role of Philanthropy

Sacha Spector, PhD
Program Director for the Environment
sspector@ddcf.org



DORIS DUKE
CHARITABLE FOUNDATION



Cumberland Forest Project, Tennessee



DORIS DUKE
CHARITABLE FOUNDATION

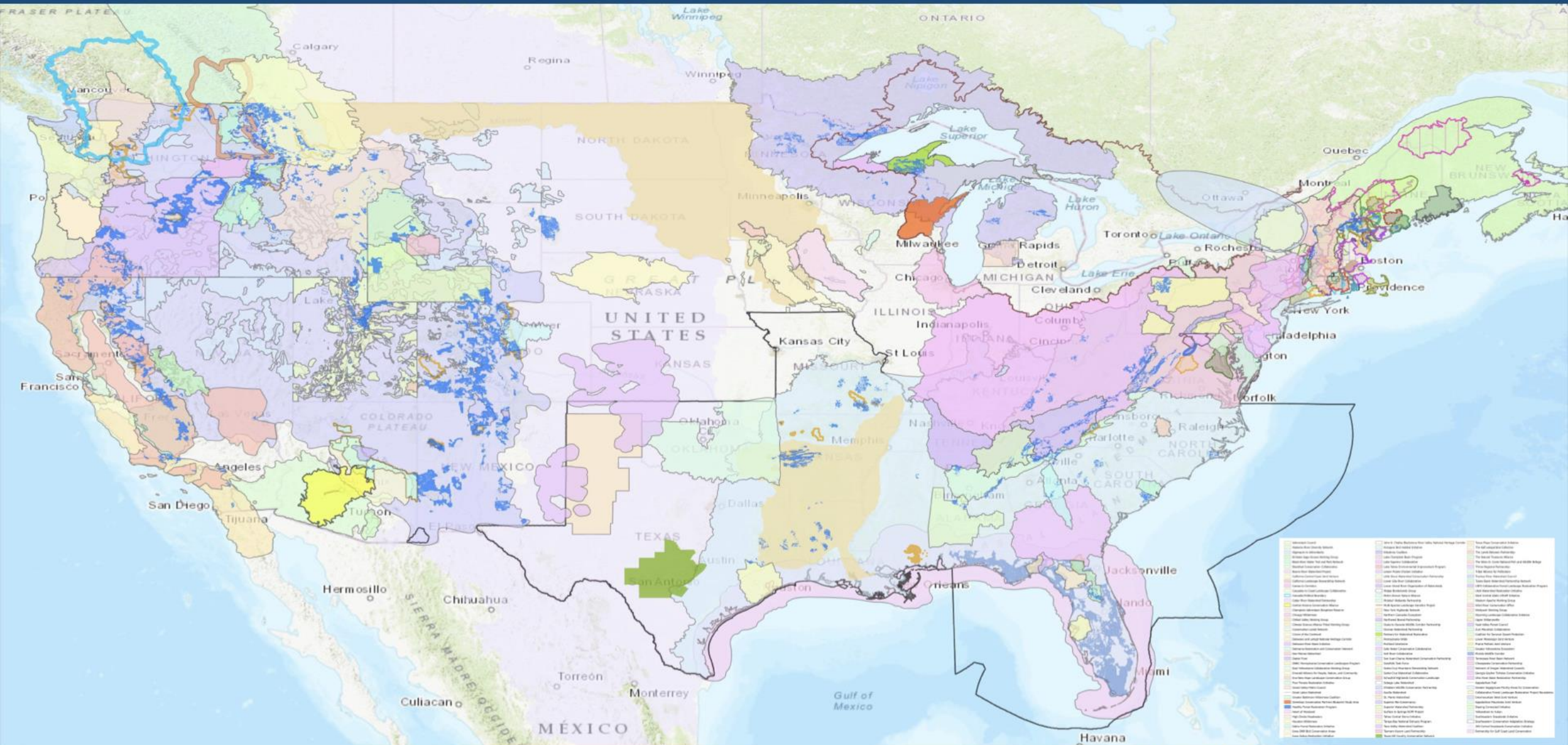


Doris Duke Conservation Scholars
UC Santa Cruz



DORIS DUKE
CHARITABLE FOUNDATION

LANDSCAPE CONSERVATION INITIATIVES



source: Network for Landscape Conservation national survey



Aleutian & Bering
Sea Initiative

Western Alaska
Partnership

Northwest Boreal
Partnership



**NORTHERN
LATITUDES**
PARTNERSHIPS
RESILIENCE ACROSS BORDERS

**Hosted by Alaska Conservation
Foundation**

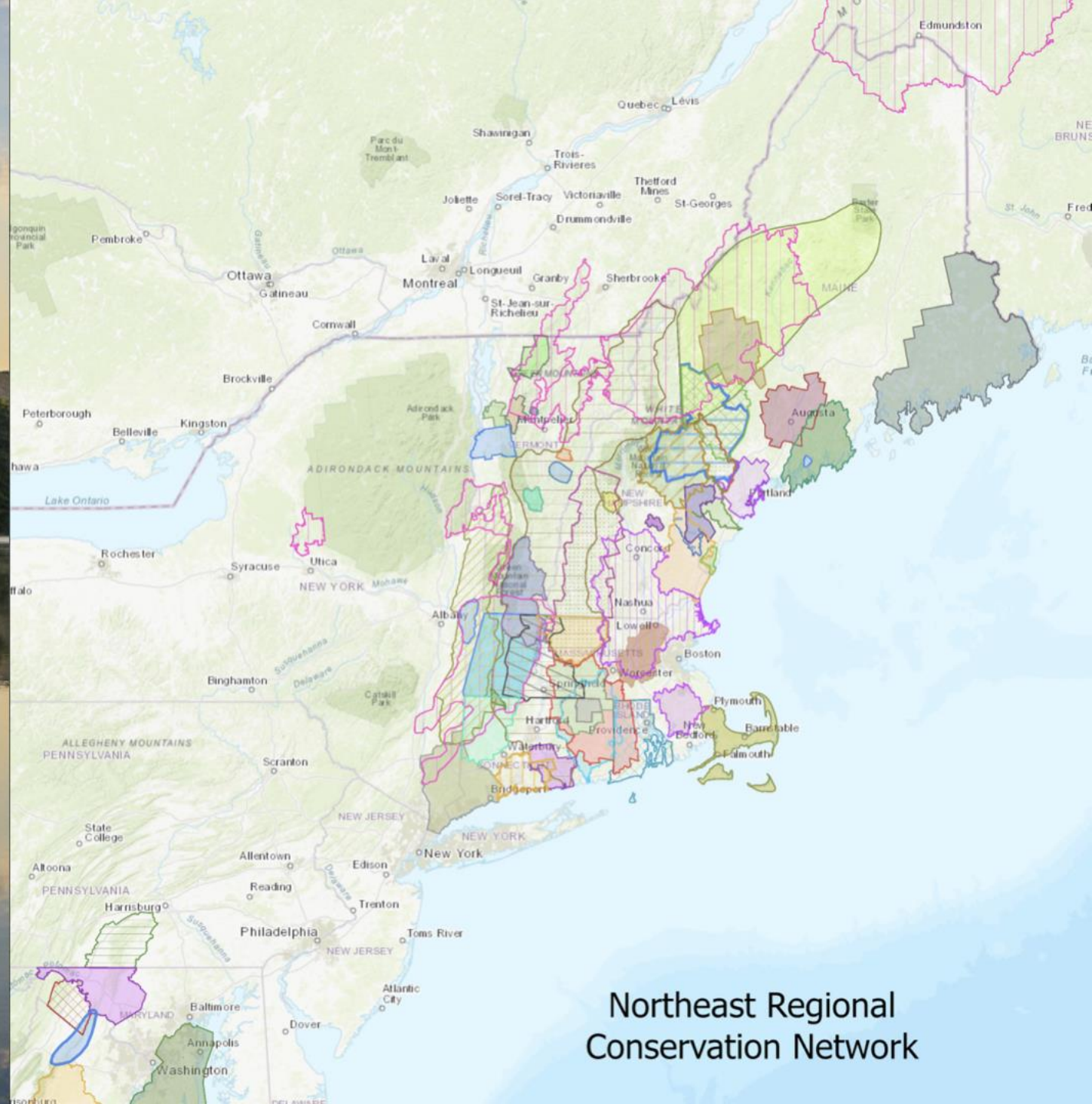
**Backing from:
Volgenau Foundation
Alaska Conservation Foundation
U.S. Fish & Wildlife Service**



Regional Conservation Partnership Network

NETWORK

<https://rcpnetwork.org/hub>



41 Regional Conservation Partnerships

Strategy and planning grants

Convenings

Trainings

Sustained support and coordination from Highstead Foundation



Highstead

Northeast Regional Conservation Network

Landscape Conservation Catalyst Fund

Coordination grants
Peer Learning
Collaborative best practices



Landscape Conservation Catalyst Fund

Coordination grants
Peer learning
Collaborative best practices



42 Grants - \$1m
450 Applicants - \$10m



A New National Framework

Locally Led, Nationally Supported

Long-term Coordination and Collaboration

Science, Planning, Implementation, and Engagement





Public-Private Partnership

“Agencies in Action: Federal Programs That Deliver Climate Mitigation and Adaptation Benefits Every Day” Briefing Series



EESI
Environmental and
Energy Study Institute

4

-  **February 08** **Financing Inclusive Clean Energy Investments in Rural America**
-  **February 24** **Energy Efficiency Means Business**
-  **March 18** **Climate Adaptation Programs across Agencies**
-  **March 29** **Building a Durable National Framework for Large Landscape Conservation**



What did you think of the briefing?

Please take 2 minutes to let us know at:
www.eesi.org/survey

Materials will be available at:
www.eesi.org/032922fed

Tweet about the briefing:
[#eesitalk](https://twitter.com/eesitalk) [@eesionline](https://twitter.com/eesionline)

Tuesday, March 29, 2022