

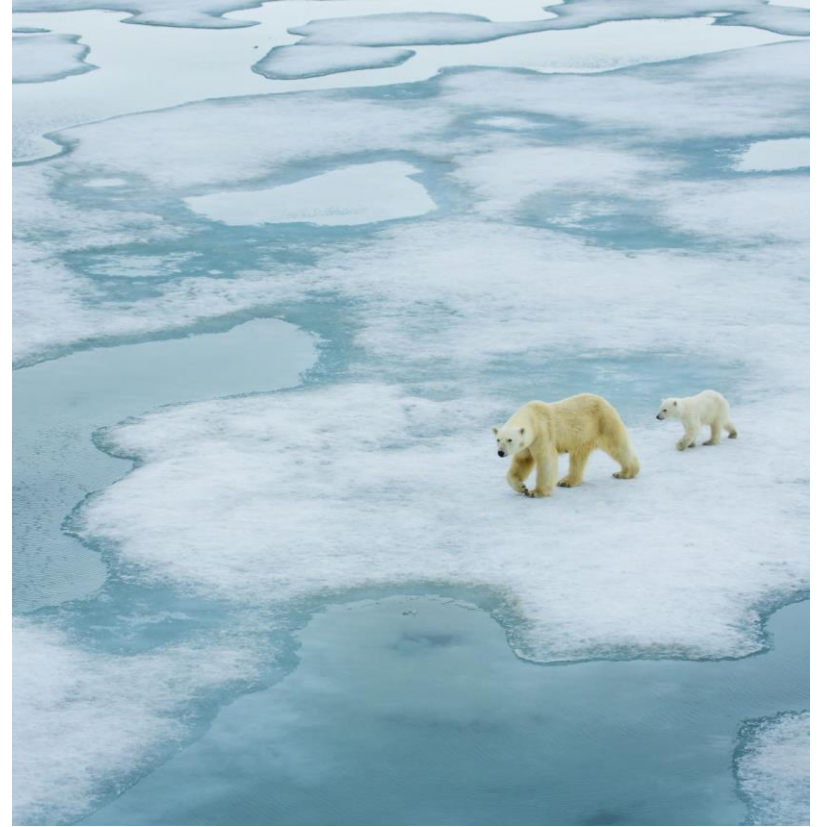
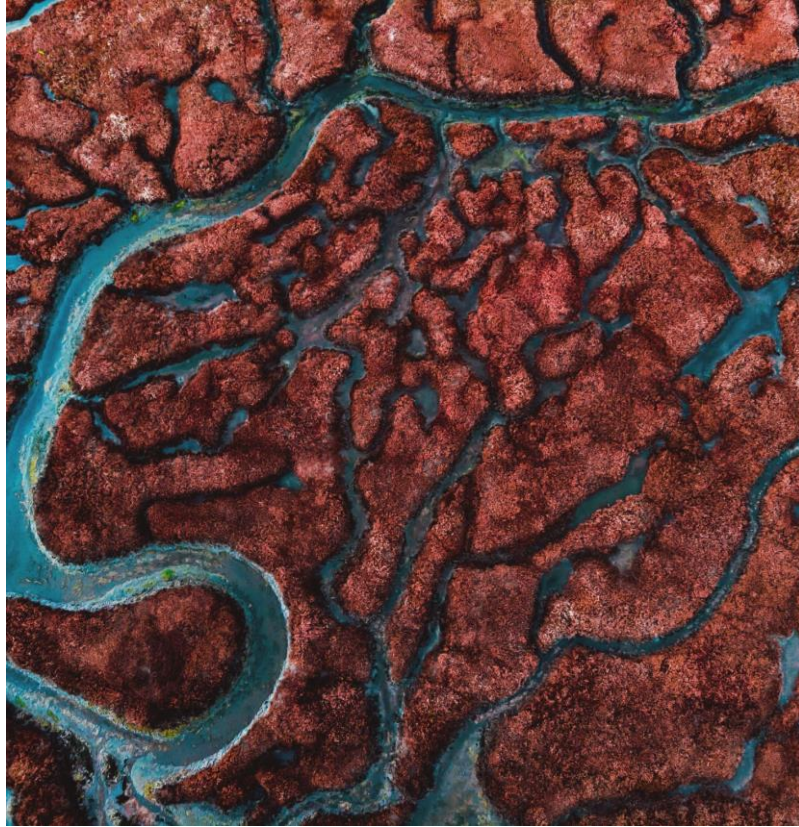
# Stitching the Pieces Together

## *The Role of Federal Coordination in Landscape Conservation*

Presented by Dr. Deb Rocque Assistant  
Director, Science Applications

U.S. Fish and Wildlife Service





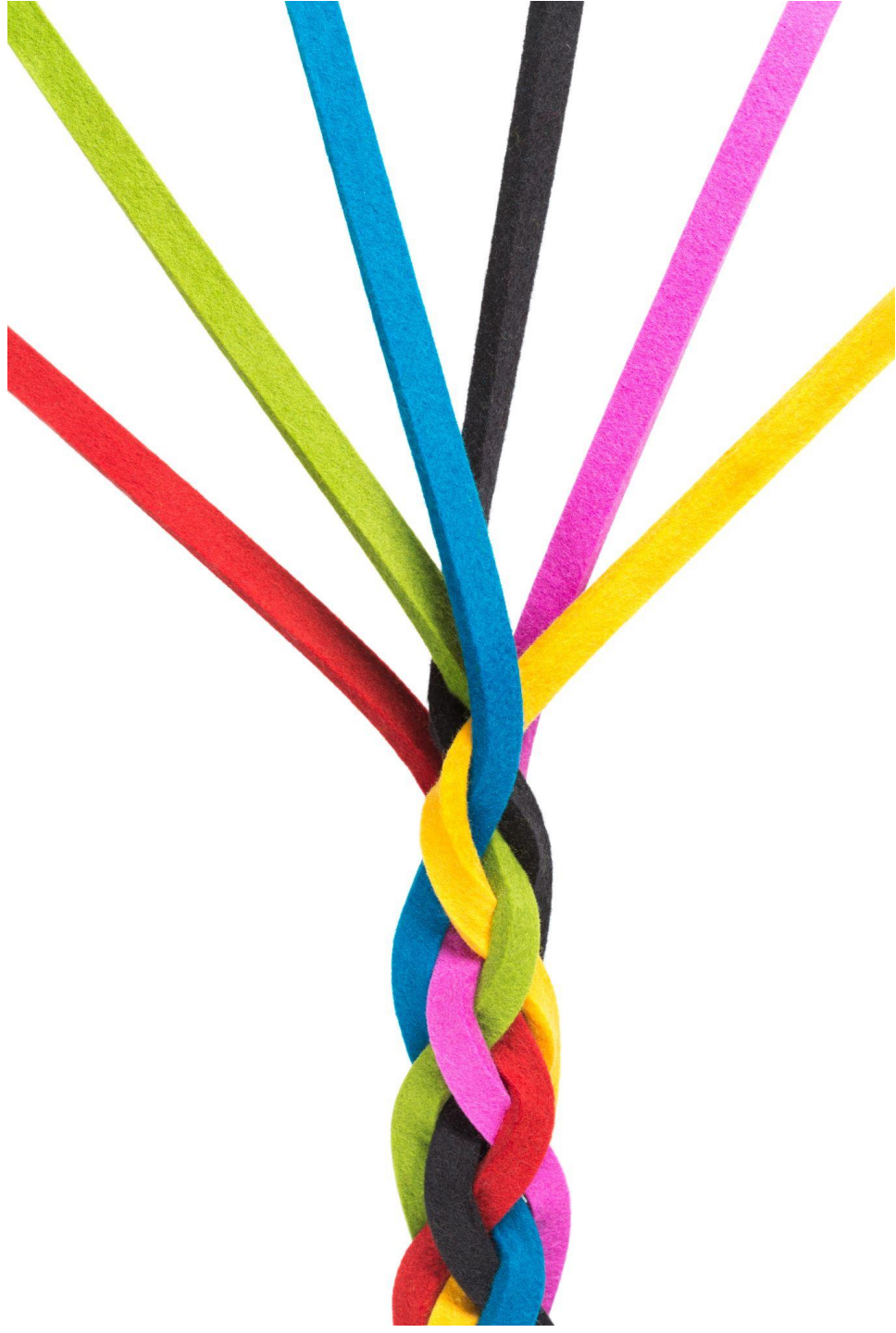
IT'S A LOT

---

# Transformational Change

---



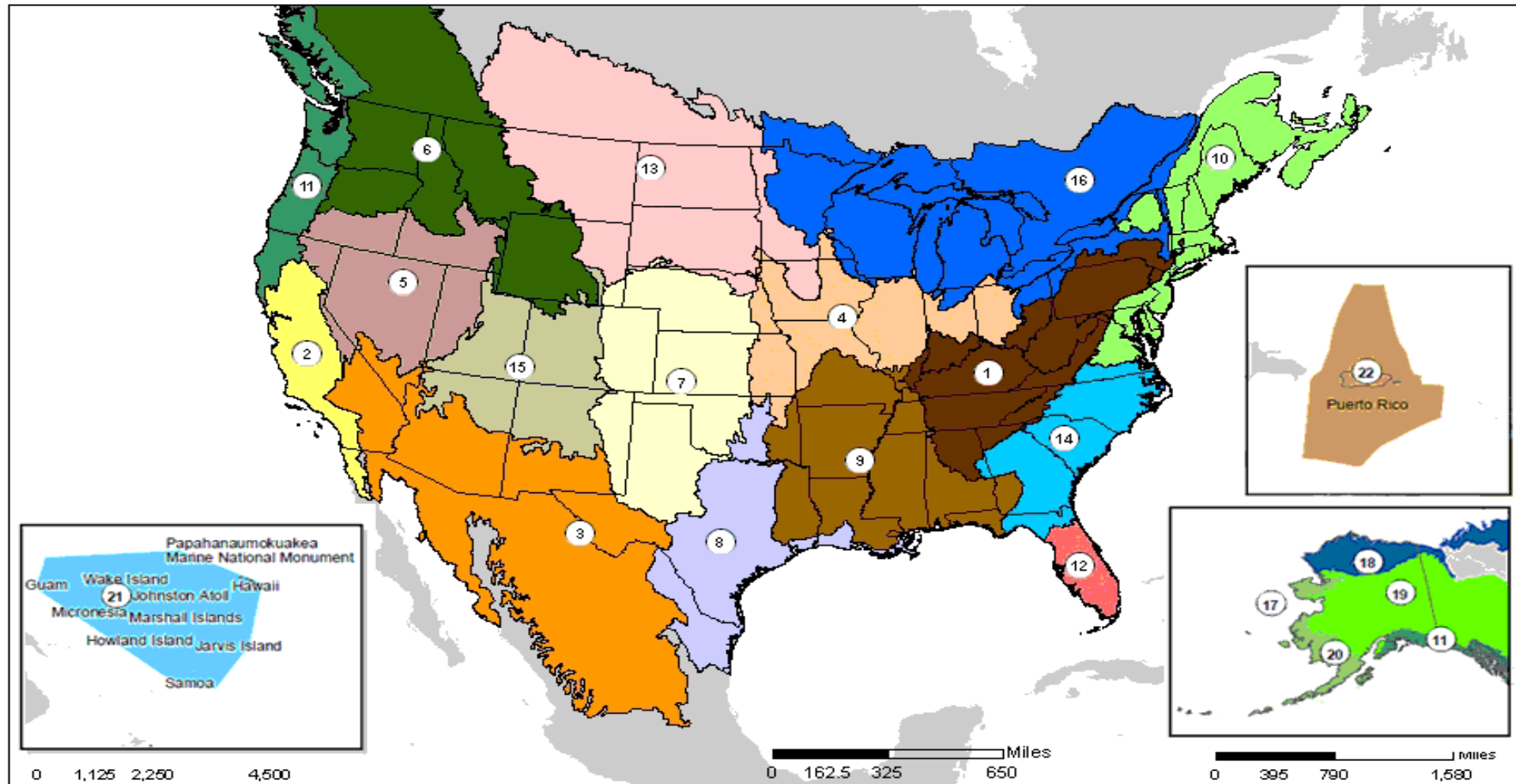


# Science Applications

We are a non-regulatory program within the U.S. Fish and Wildlife Service that tackles landscape conservation issues no single Service program or partner can address alone.



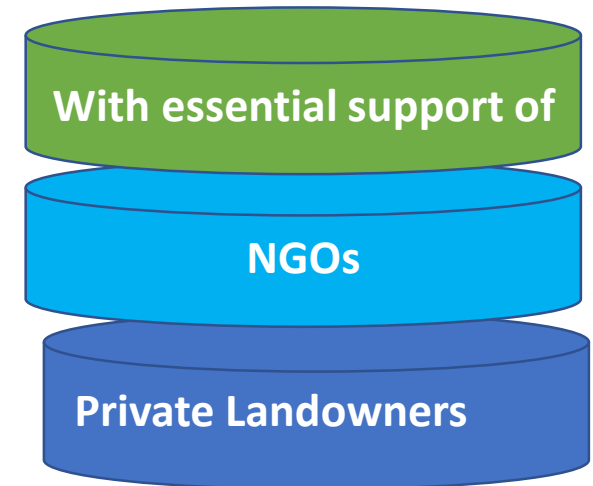
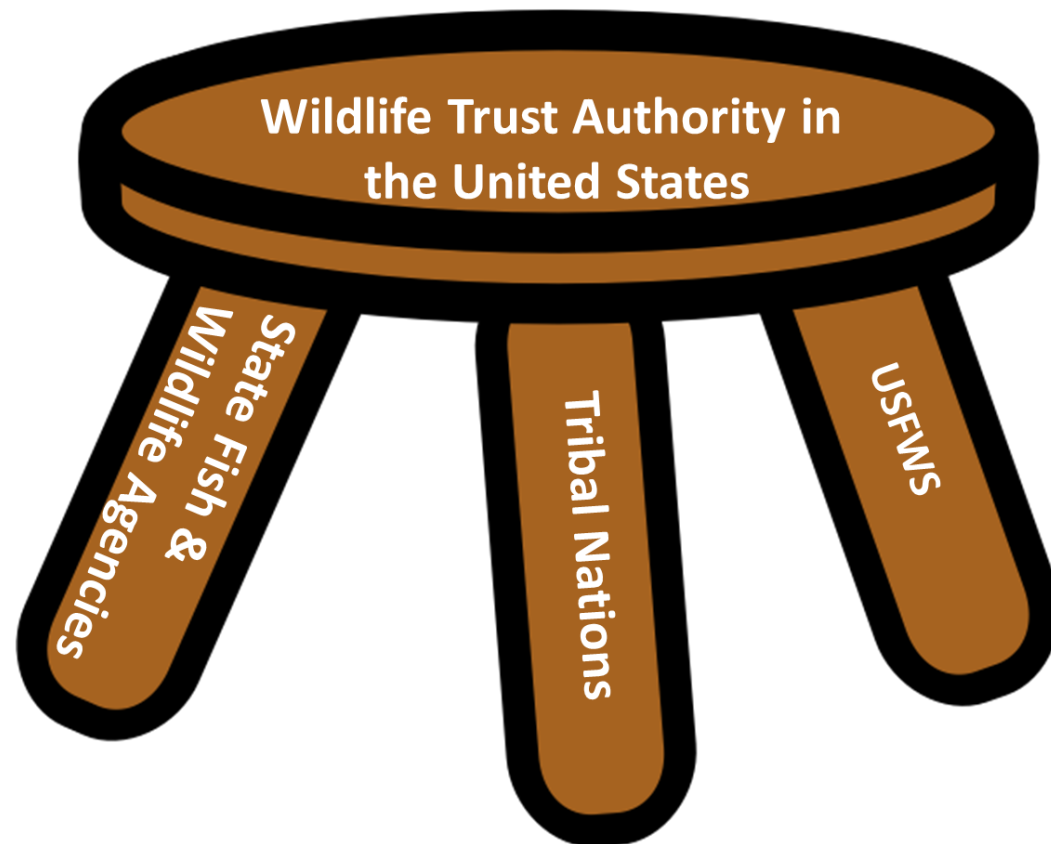
# Landscape Conservation Cooperative Network



- |   |                                   |                                     |                                  |
|---|-----------------------------------|-------------------------------------|----------------------------------|
| 1. Appalachian                              | 7. Great Plains                   | 13. Plains and Prairie Potholes     | 19. Northwestern Interior Forest |
| 2. California                               | 8. Gulf Coast Prairie             | 14. South Atlantic                  | 20. Western Alaska               |
| 3. Desert                                   | 9. Gulf Coastal Plains and Ozarks | 15. Southern Rockies                | 21. Pacific Islands              |
| 4. Eastern Tallgrass Prairie and Big Rivers | 10. North Atlantic                | 16. Upper Midwest and Great Lakes   | 22. Caribbean                    |
| 5. Great Basin                              | 11. North Pacific                 | 17. Aleutian and Bering Sea Islands | Unclassified                     |
| 6. Great Northern                           | 12. Peninsular Florida            | 18. Arctic                          |                                  |



# Wildlife Conservation in the United States



**OH, IT DIDN'T WORK**



**STILL A GOOD IDEA, THOUGH**



# U.S. Fish and Wildlife Service and States: Recent Accomplishments



ASSOCIATION of  
FISH & WILDLIFE  
AGENCIES



- **AFWA resolution on Landscape Conservation**
- **AFWA President's Task Force on Shared Science and Landscape Conservation Priorities**
- **State Wildlife Action Plan framework to enhance landscape conservation**
- **Landscape Conservation Joint Task Force**







# U.S. Fish and Wildlife Service and Tribes: Recent Accomplishments



- Future of Conservation Forum
- Zoonotic Disease Initiative
- Supporting the hiring of wildlife biologists by the Native American Fish and Wildlife Society
- Grants to states, Tribes, territories in IJA



# Collaborative Conservation is Complicated

50 States in 4  
AFWA Regions

8 USFWS Regions

574 Recognized  
Tribes

18 Joint  
Ventures/20 Nat'l  
Fish Habitat  
Partnerships

Almost 15,000  
NGOs

Private Landowners

Other Federal  
Agencies

Local Communities

# Role of the Federal Gov't – Weaving it Together

- **Coordination at Multiple Scales**
- **Common Processes**
- **Consistent Data/Science**
- **Funding**



- **A National Framework**



# A National Framework Defined

- A durable approach that brings people together across geographies and cultures to address shared conservation challenges by creating a network of healthy lands and waters where fish, wildlife, plants and people thrive.

Or

- A durable way of doing business that strategically targets capacity and resources to connect and conserve high priority landscapes/ecosystems

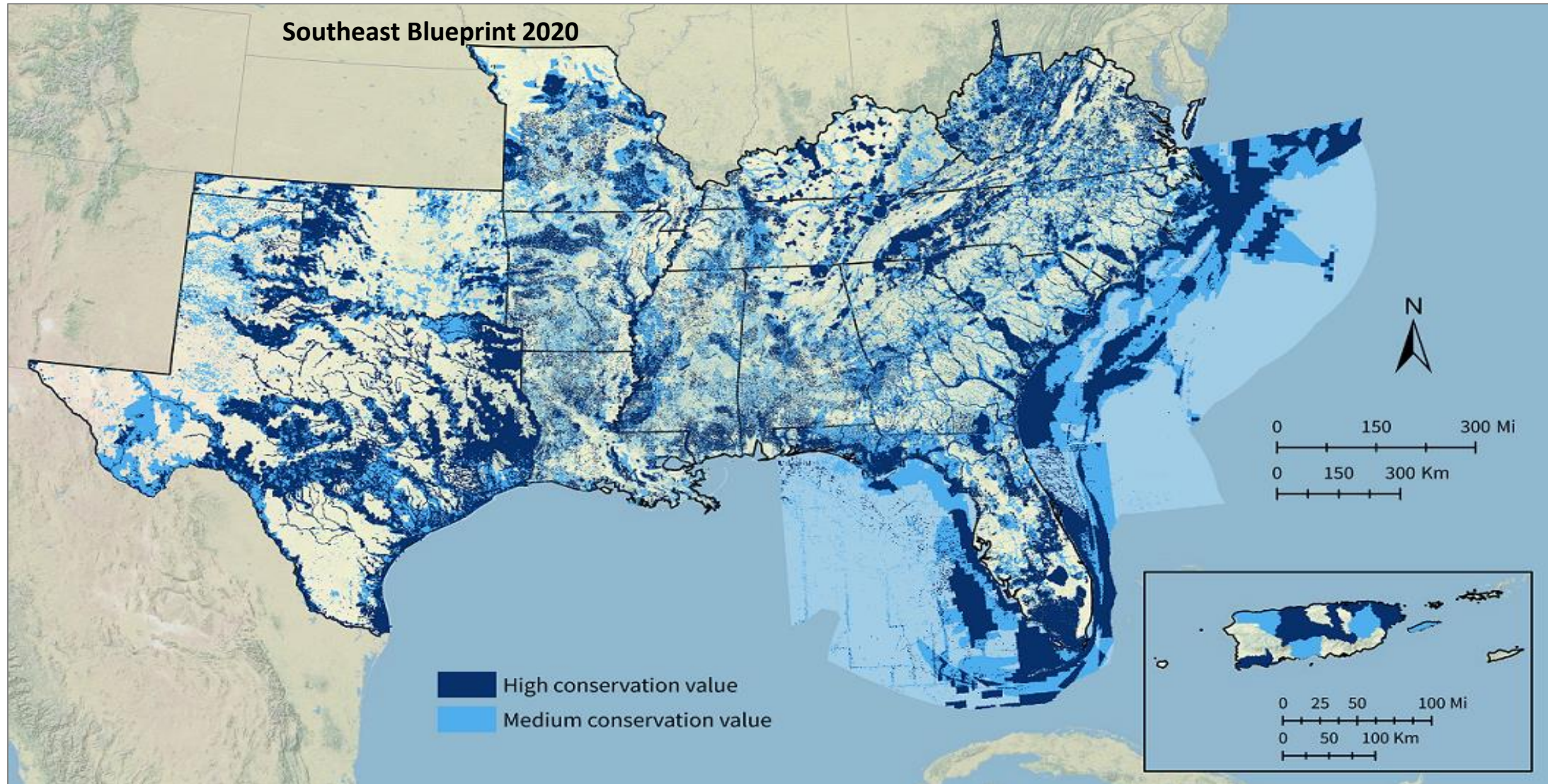
# Example from SECAS – A Bold Vision

---

A **connected network** of lands and waters that supports thriving fish and wildlife populations and improved quality of life for people



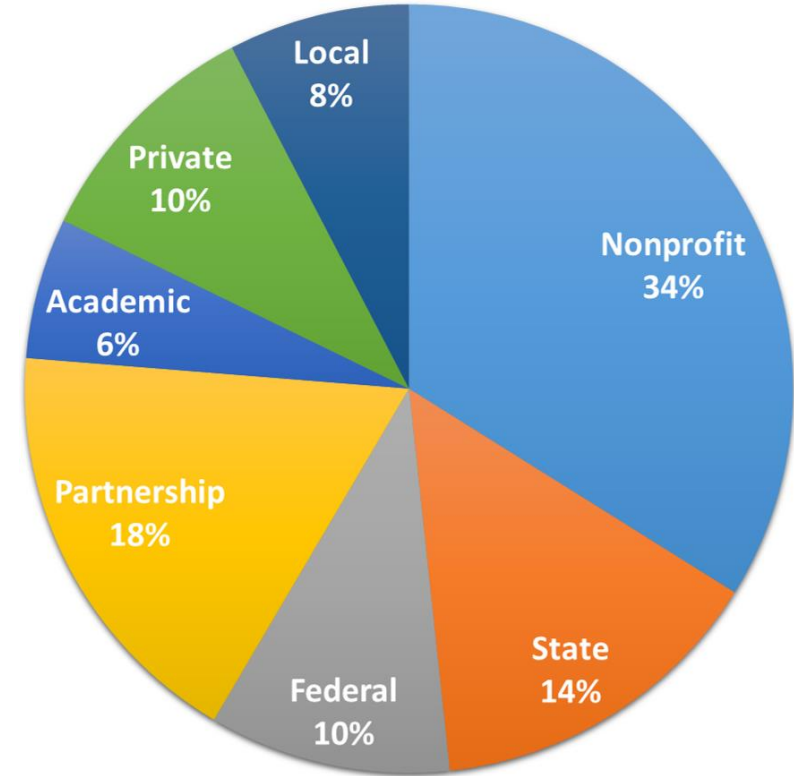
# The Southeast Conservation Blueprint



# How is the Blueprint being used?

The Blueprint is helping people from more than 100 organizations:

- 17 state agencies
- 8 land trusts
- 12 federal agencies
- 9 local governments and planning organizations
- 32 nonprofits
- 21 conservation partnerships
- 12 private businesses
- 7 universities and academic organizations



*Number of organizations using the Blueprint as of July 2021*

# Final Thoughts on a National Framework

- **Provides Consistency across Jurisdictions**
- **Identifies Highest Conservation Priorities at a National Scale**
  - **Drives Federal (Cross-Departmental) Investments**
- **Is Scalable**
  - **Allows for Local Input, Focus, and Prioritization**
- **Brings Partnerships Together to Determine Outcomes/Timeframes**
- **Drives Collaboration**
- **Healthy Landscapes, Healthy People, Healthy Communities**