



The Role of NGOs in Promoting Locally-Led, Nationally-Scaled Collaborative Conservation

Anna Wearn
Director of Government Affairs
anna@largelandscapes.org



CENTER
for
**LARGE LANDSCAPE
CONSERVATION**

The Role of NGOs in Promoting Locally-Led, Nationally-Scaled Collaborative Conservation

1. *On-the-Ground Action: Supporting, Catalyzing, and Connecting Partnerships*
 - a. Supporting existing partnerships
 - b. Catalyzing new partnerships and initiatives
 - c. Creating networks of partnerships

2. *Visionary Action: Advancing a Durable and Inclusive National Landscape Conservation Framework*
 - a. Convening and participating in dialogues
 - b. Developing and advancing policy recommendations
 - c. Advocating for robust, sustainable funding

What is large landscape conservation and why is it important?



Theodore Roosevelt National Park, NPS



Recognizing women in landscape-scale conservation

A grid of 12 black and white photographs showcasing women in conservation. The photos include: a woman smiling in a portrait; a woman in a field; a woman in a hat and field gear; a woman in a hat and field gear; a woman in a hat and field gear; a woman in a hat and field gear; a woman in a hat and field gear; a woman in a hat and field gear; a woman in a hat and field gear; a woman in a hat and field gear; a woman in a hat and field gear; a woman in a hat and field gear.

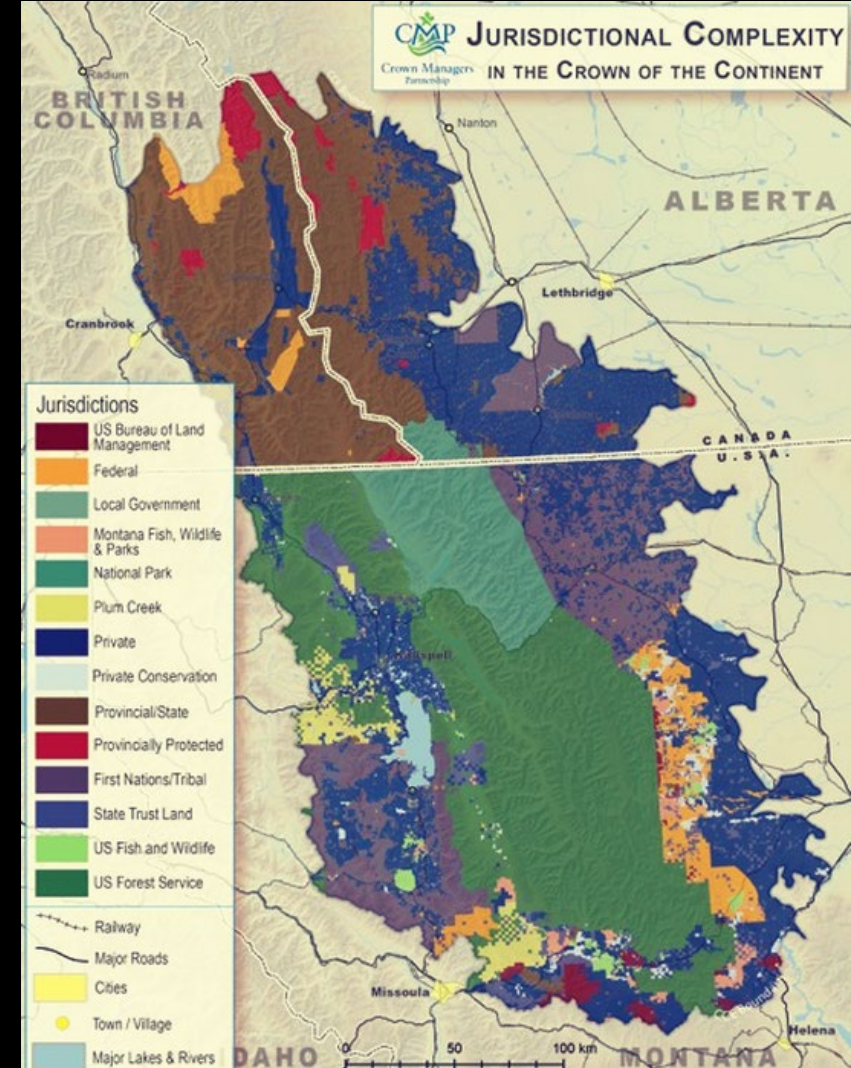
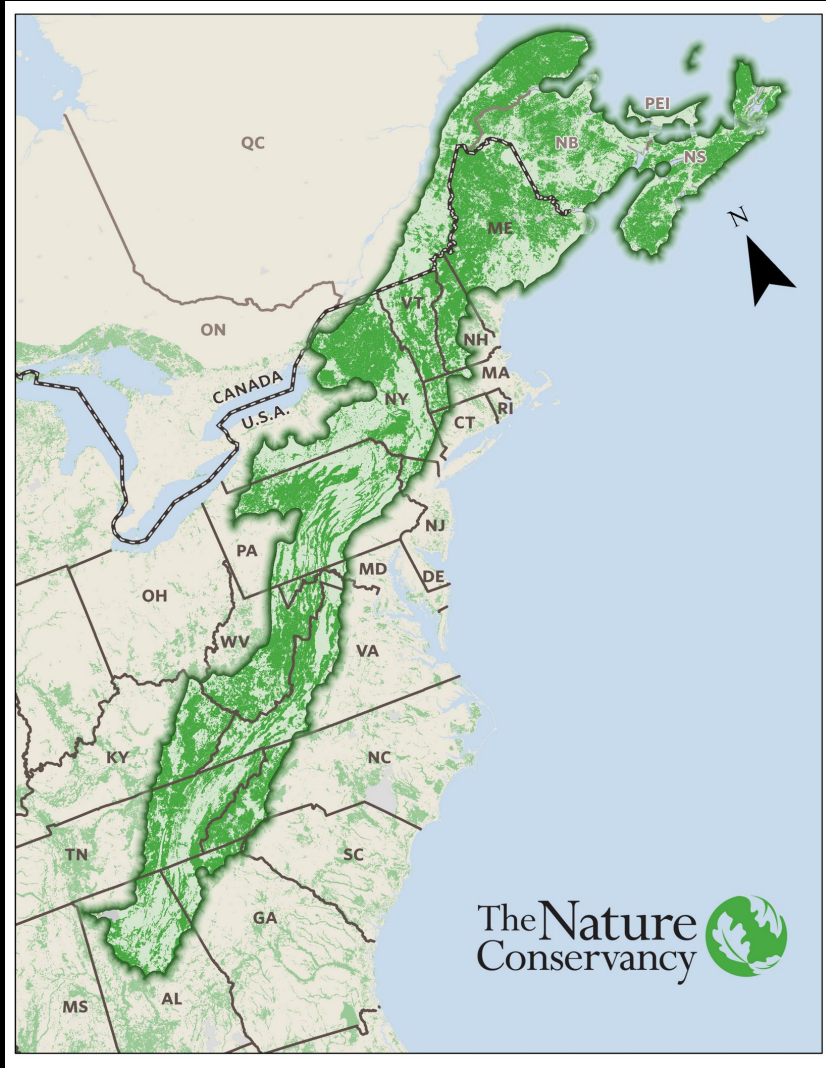
NPS Connected Conservation



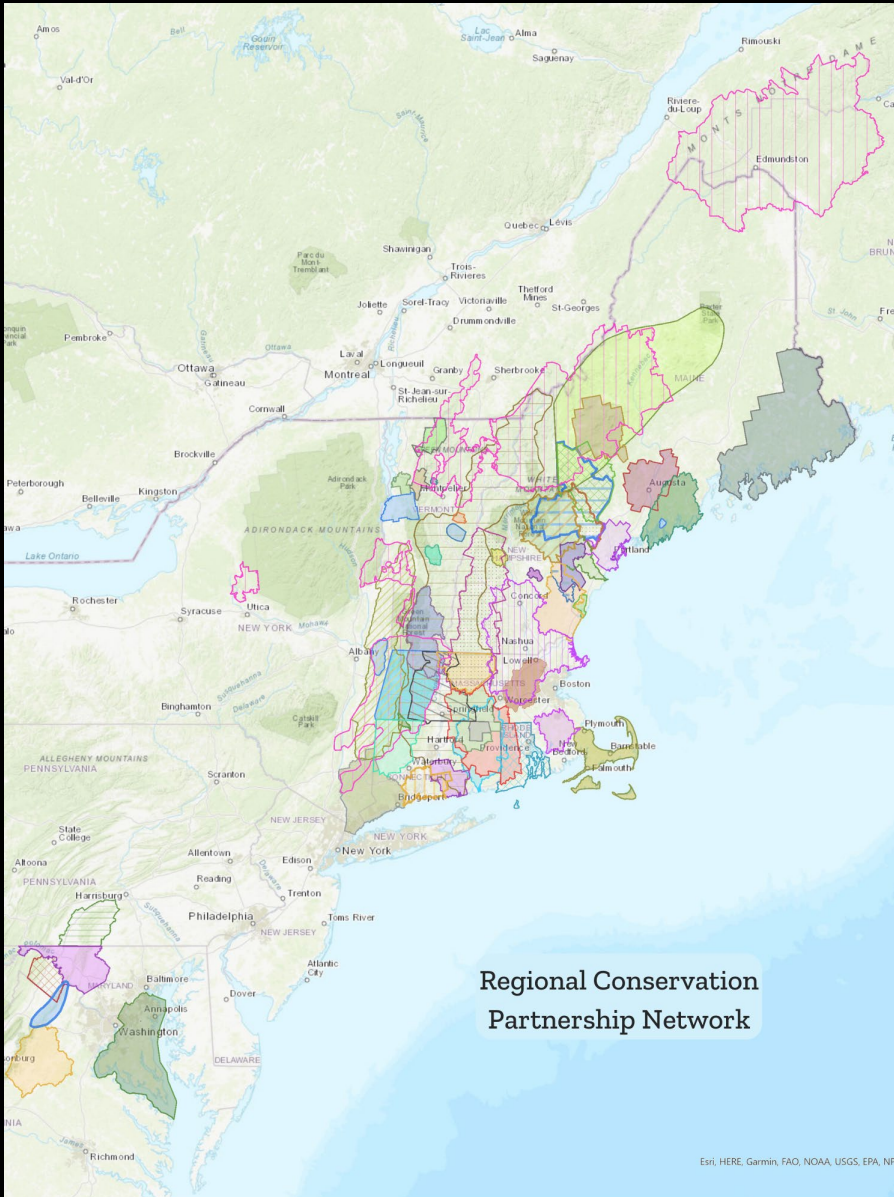
SEGAS Blueprint Workshop



Supporting partnerships and catalyzing new initiatives



Creating networks of partnerships



The screenshot shows the homepage of the Network for Landscape Conservation. The header includes the organization's logo and name, followed by navigation links: ABOUT, CATALYST FUND, OUR WORK, KNOWLEDGE CENTER, NEWS, BECOME A PARTNER, and DONATE. A central menu lists resources: RESOURCES LIBRARY, INITIATIVES DATABASE, PERSPECTIVES: LANDSCAPE CONSERVATION IN ACTION, LANDSCAPE CONSERVATION WEBINAR SERIES, JOBS AND OPPORTUNITIES, and BULLETIN ARCHIVE. The main content area features a large aerial photograph of a rural landscape with a field and trees, overlaid with the text: **Advancing Conservation at Scale** and *The Network for Landscape Conservation advances cross-border, collaborative conservation as a vital approach to sustain nature, culture, and community.*

Convening dialogues and developing policy recommendations

Next Generation of Landscape Conservation Dialogues

- **Guiding Principles**

- Ensure inclusivity and equity.
- Promote collaboration and coordination between federal, state, tribal, and local partners.
- Provide long-term, reliable funding that leverages public-private partnerships.
- Integrate climate resilience and biodiversity conservation efforts.
- Recognize geographic differences and employ a bottom-up approach.

- **Preliminary Policy Recommendations**

- Establish a body or convening structure to coordinate federal landscape-scale conservation and climate resilience efforts.
- Establish a diverse advisory body including non-federal stakeholders to guide implementation.
- Develop legislation to establish long-term, reliable support for a nationwide network of landscape conservation collaboratives, including funding for science, conservation, and collaborative capacity.
- <https://largelandscapes.org/wp-content/uploads/2021/04/Build-back-a-better-National-Landscape-Conservation-Framework.pdf>

Convening dialogues and developing policy recommendations

Future of Conservation Forum

- **Speakers**
 - USFWS, USGS, and DOI leadership
 - NAFWS and AFWA leadership
 - Private landowners and business interests
 - NGO leaders
- **Topics**
 - Collaboration
 - Private lands
 - Biodiversity
 - Climate change
 - Urban landscapes
 - Coordination across governments
 - Integrating science and traditional ecological/indigenous knowledge
- **Overarching need**
 - Weave together efforts and create decision support tools for strategically and collaboratively prioritizing conservation actions and investments.
- **Cross-cutting needs**
 - Inventory existing efforts, partnerships, and lessons learned.
 - Build trust and collaborative capacity to cooperate across jurisdictions and scales.
 - Increase equity, inclusion, and outreach.
 - Secure more robust and sustainable funding.

Convening dialogues and developing policy recommendations

SALAZAR CENTER
FOR NORTH AMERICAN CONSERVATION


WHAT WE DO ABOUT EVENTS STORIES




2021 Virtual Symposium on Conservation Impact



Sponsored by



US – Canada Transboundary and Indigenous-led Conservation of Nature and Culture
Priority Recommendations



Advocating for robust, sustainable funding

Budget & Appropriations

- **FY22 omnibus appropriations legislation**
 - \$12.5M for Cooperative Landscape Conservation Program
 - Critical funding, but half of level when established and ~\$6.5M less than requested
 - USFS collaborative capacity grants
- **FY23 landscape conservation/resilience funding requests**
 - Interagency (DOI)/interdepartmental
 - DOI-USDA-WGA Collaborative Conservation Task Force
 - Wildland Fire Management Program
 - American Conservation and Stewardship Atlas
 - Land and Water Conservation Fund
 - USFWS
 - Science Applications Program
 - Cooperative Landscape Conservation (\$19M) & Science Support
 - Migratory Bird Joint Ventures Program
 - National Fish Passage Program
 - Partners for Fish and Wildlife Program & Coastal Program
 - BLM
 - Landscape and habitat connectivity initiatives
 - NPS
 - Large-scale wildlife conservation initiatives
 - BIA
 - Tribal Climate Resilience Program
 - USGS
 - Climate Adaptation Science Centers
 - Coastal/Marine Hazards and Resources Program
 - Cooperative Research Units
 - NRCS
 - Conservation Technical Assistance Program
 - Farm Bill Program
 - USFS
 - Collaborative Forest Landscape Restoration Program
 - State and Private Forestry Programs
 - NOAA
 - National Estuarine Research Reserves

Advocating for robust, sustainable funding

Infrastructure Law

- **DOT: *Habitat Connectivity***
 - Wildlife Crossings Pilot Program
 - Federal Lands Transportation Program
 - Federal Lands Access Program
 - Surface Transportation Block Grant Program
 - Nationally Significant Freight and Highway Projects Program
 - Bridge Investment Program
 - National Culvert Removal, Replacement, and Restoration Grant Program
 - PROTECT & INFRA Programs
- **USDA & DOI: *Ecosystem Restoration***
 - Joint Chiefs Landscape Restoration Partnership Program
 - Forest Service Legacy Road and Trail Remediation Program
 - Community Wildfire Defense Grants
 - Collaborative Forest Landscape Restoration Program
 - Collaborative-based, Aquatic-focused, Landscape-scale Restoration Program

Advocating for robust, sustainable funding

Coordinating and Leveraging Federal Investments: Existing Models and New Opportunities

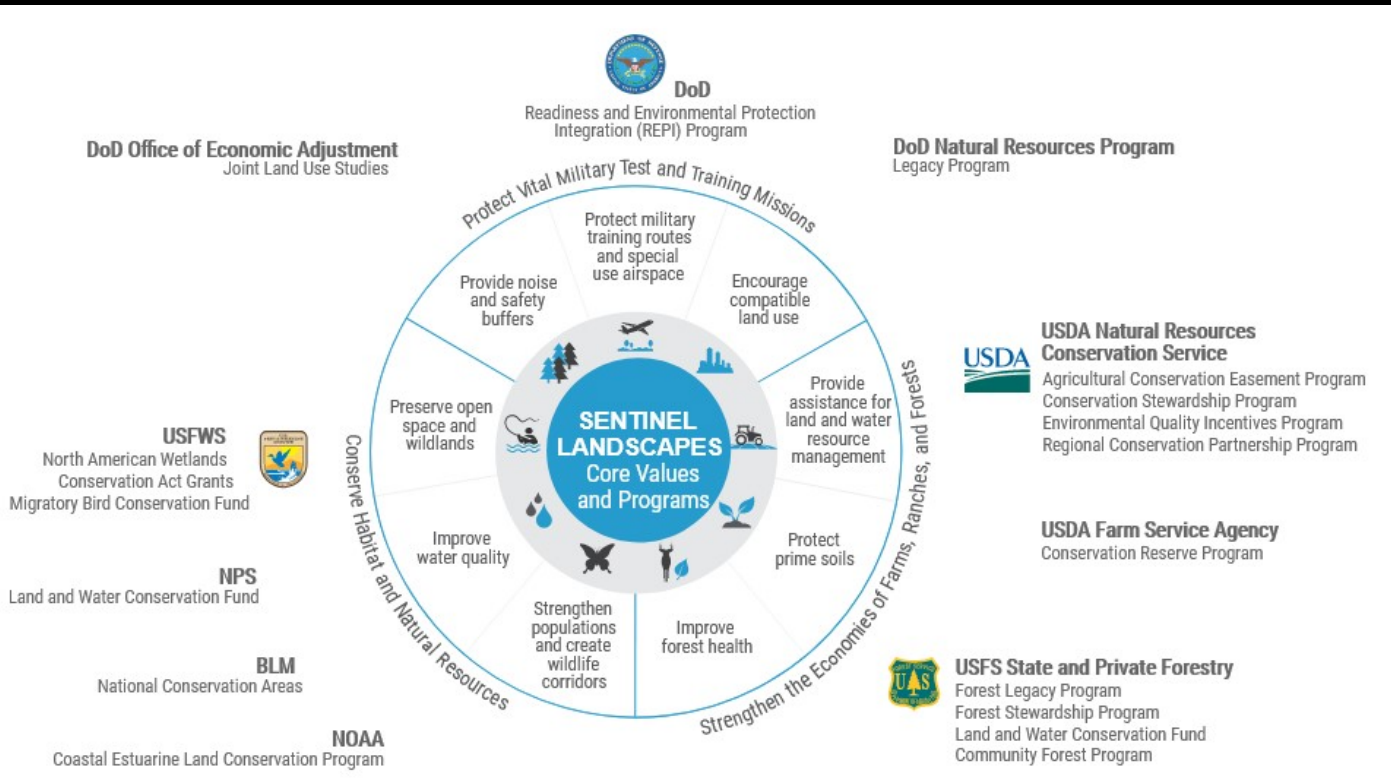


Figure 2: Funding Committed to Sentinel Landscapes Through FY 2020 in Millions

