



# Federal Transportation Funding + State Impact

Amber Dallman | Sustainability and Public Health Office Director

Minnesota's multimodal transportation system maximizes the health of people, the environment and our economy.

**4<sup>TH</sup>** LARGEST PUBLIC ROAD SYSTEM IN THE NATION

11,717 centerline miles of Interstate, US and MN Highways



**133**

Publicly Owned State-funded Airports



More than

**200**



Construction Projects Annually

**800+**

MnDOT Snowplows



**5,000+**  
EMPLOYEES

In St. Paul and 8 regional offices

**3** U.S. Bicycle Routes



Transit In All

**87**

Counties



**21** Railroad Companies  
& **4,217**  
Miles of Track



**4,670**

HIGHWAY BRIDGES

**5**

MISSISSIPPI RIVER SYSTEM PORTS



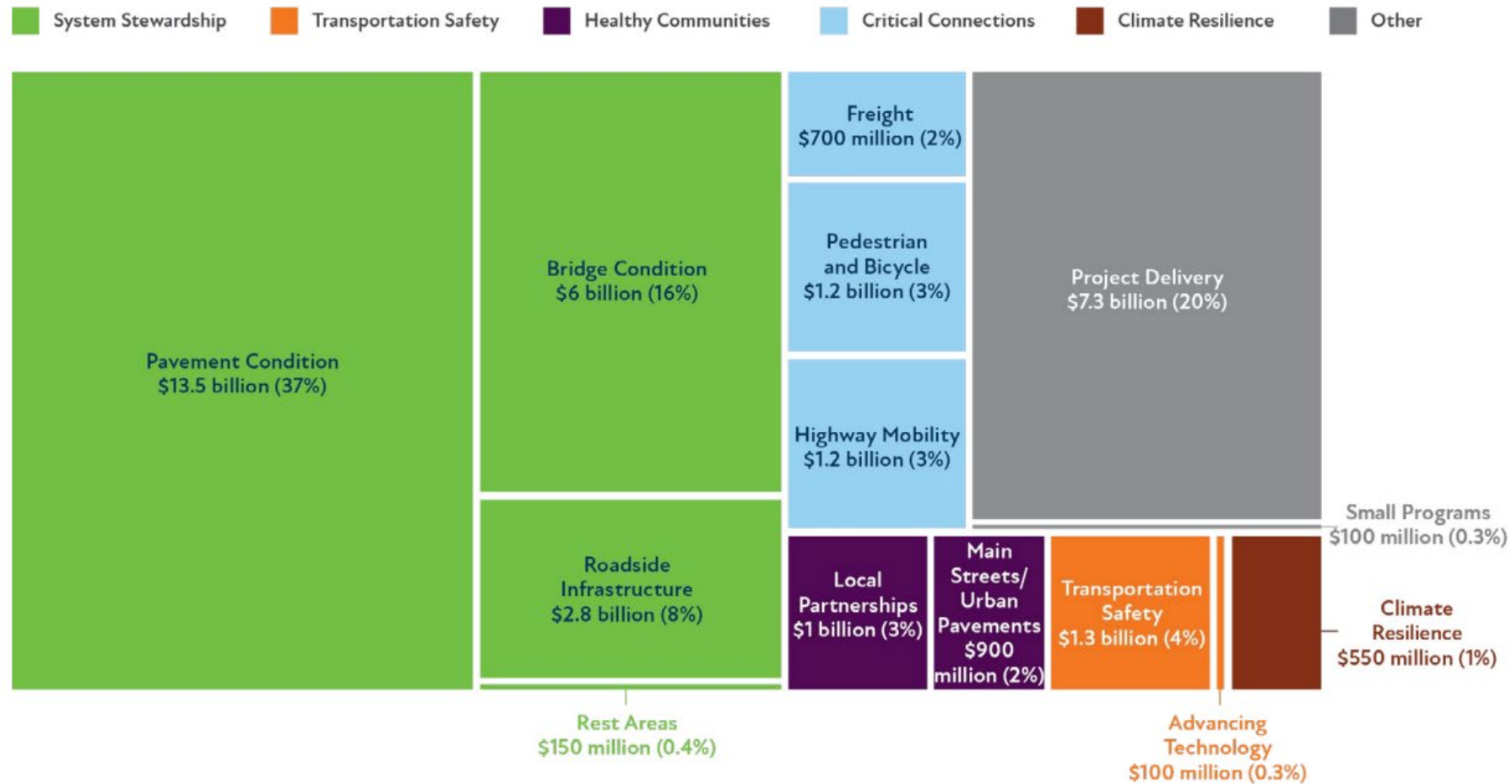
**4**

LAKE SUPERIOR PORTS



# MN State Highway Investment Plan Direction

Figure 6-1: 20-Year Capital Highway Investment Direction





# Sustainability Goals

- People want safe, convenient and affordable travel options – like walking and biking
- Communities want infrastructure that withstands freeze-thaw cycles, flooding, wildfires
- Connected networks – with state highways traveling through small towns



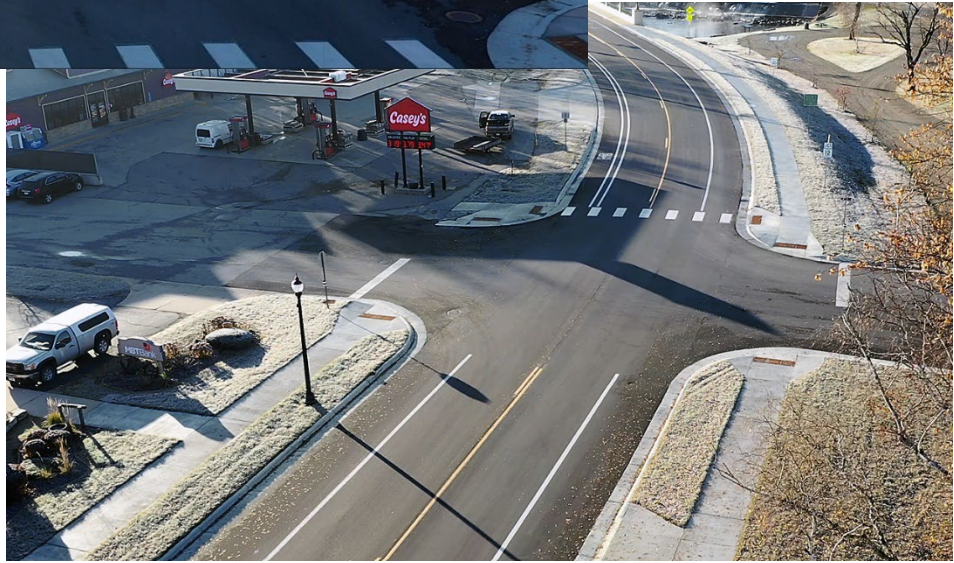
# MnDOT + Bipartisan Infrastructure Law

- Legislation timing
- Program flexibility – allows states to meet long-range goals
- Engaged people to identify priorities
- Established plans to implement

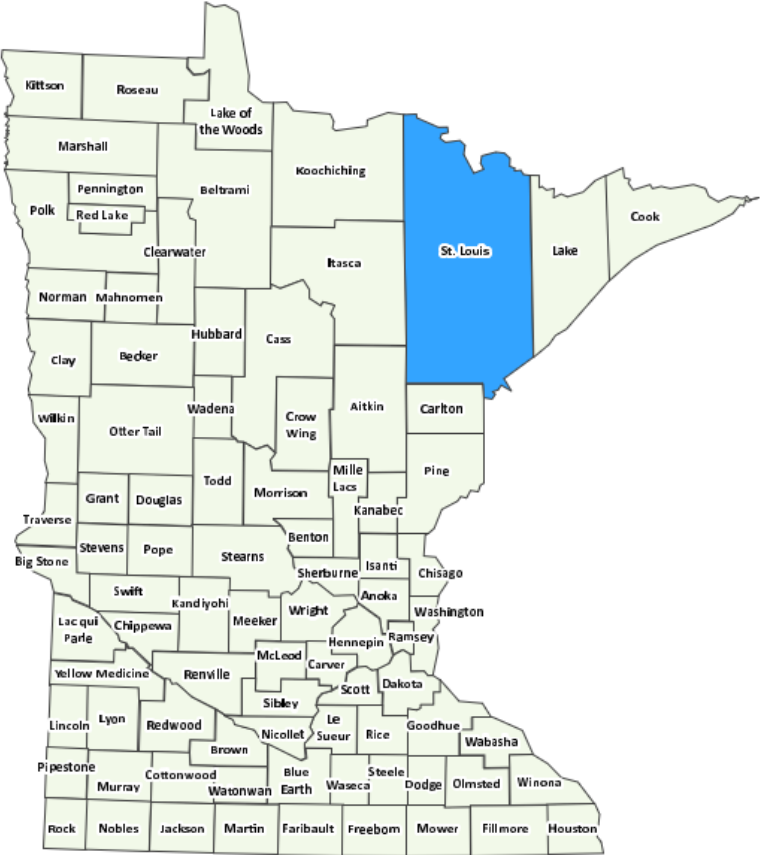




# Mantorville – Hwy 57



# Biwabik – Hwy 135





# Marshall - Hwy 19 / College Drive



- Community identified need to move safely across town
- Project includes
  - Roundabouts
  - Walking & biking improvements
  - Landscaping & lighting
  - Freight considerations



# Winona – Hwy 14

- Improve drainage
- Restored slope
- Shoulder widened
- Guardrail replaced





Thank you!  
Amber Dallman | [amber.dallman@state.mn.us](mailto:amber.dallman@state.mn.us)