



Community-Centered Resilience: Lessons from Louisiana

November 6, 2019

Materials will be available at:

www.eesi.org/110619lasafe

Tweet about the briefing:

[#eesitalk](https://twitter.com/eesitalk)

[@eesionline](https://twitter.com/eesionline)



EESI

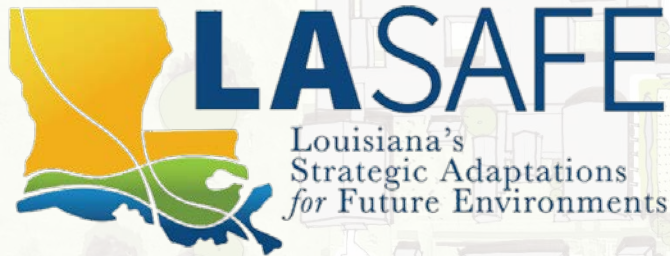
Environmental and
Energy Study Institute

- Founded in **1984** by a **bipartisan** Congressional caucus.
- Now an **independent**, bipartisan **nonprofit** with no Congressional funding.
- We provide **fact-based information** on **energy** and **environmental** policy for Congress and other policymakers.
- We focus on **win-win solutions** to make our energy, buildings, and transportation sectors **sustainable** and **resilient**.

Visit www.eesi.org to:

- View **videos** of our Congressional briefings.
- Sign up to receive our **briefing notices**, and **fact sheets**.
- Subscribe to our newsletters, including ***Climate Change Solutions***.

Community-Centered Resilience: Lessons from Louisiana



Environmental and Energy Study Institute // 11.6.19

Mathew D. Sanders, AICP

Resilience Policy & Program Administrator
Louisiana Office of Community Development



Liz Williams Russell

Coastal Community Resilience Director
Foundation for Louisiana



Elder Donald Bogen, Jr.

Organizer
Bayou Interfaith Shared Community Organizing



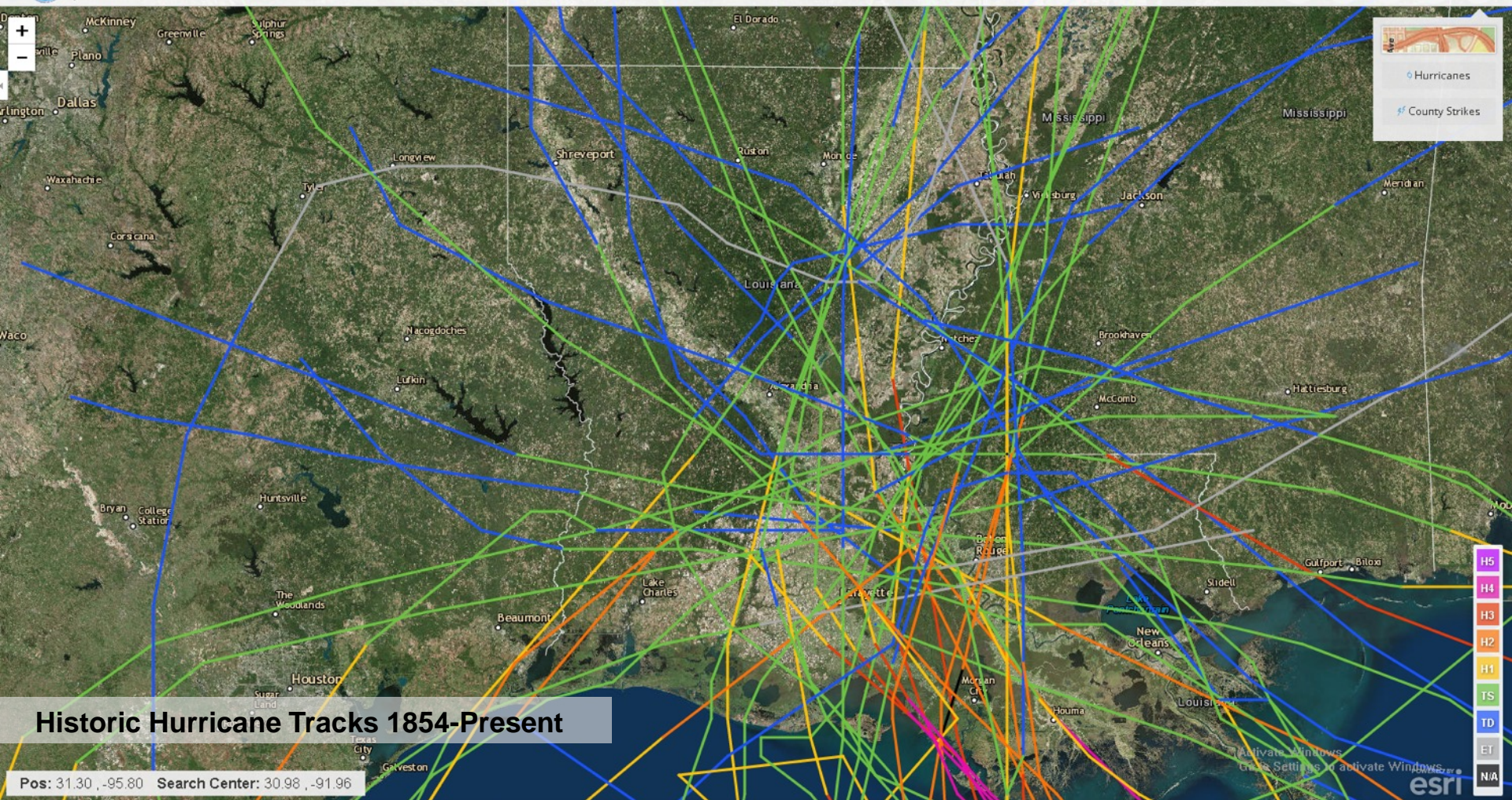
Justin Kozak, PhD, CFM

Researcher & Policy Analyst
Center for Planning Excellence (CPEX)





Historical Hurricane Tracks

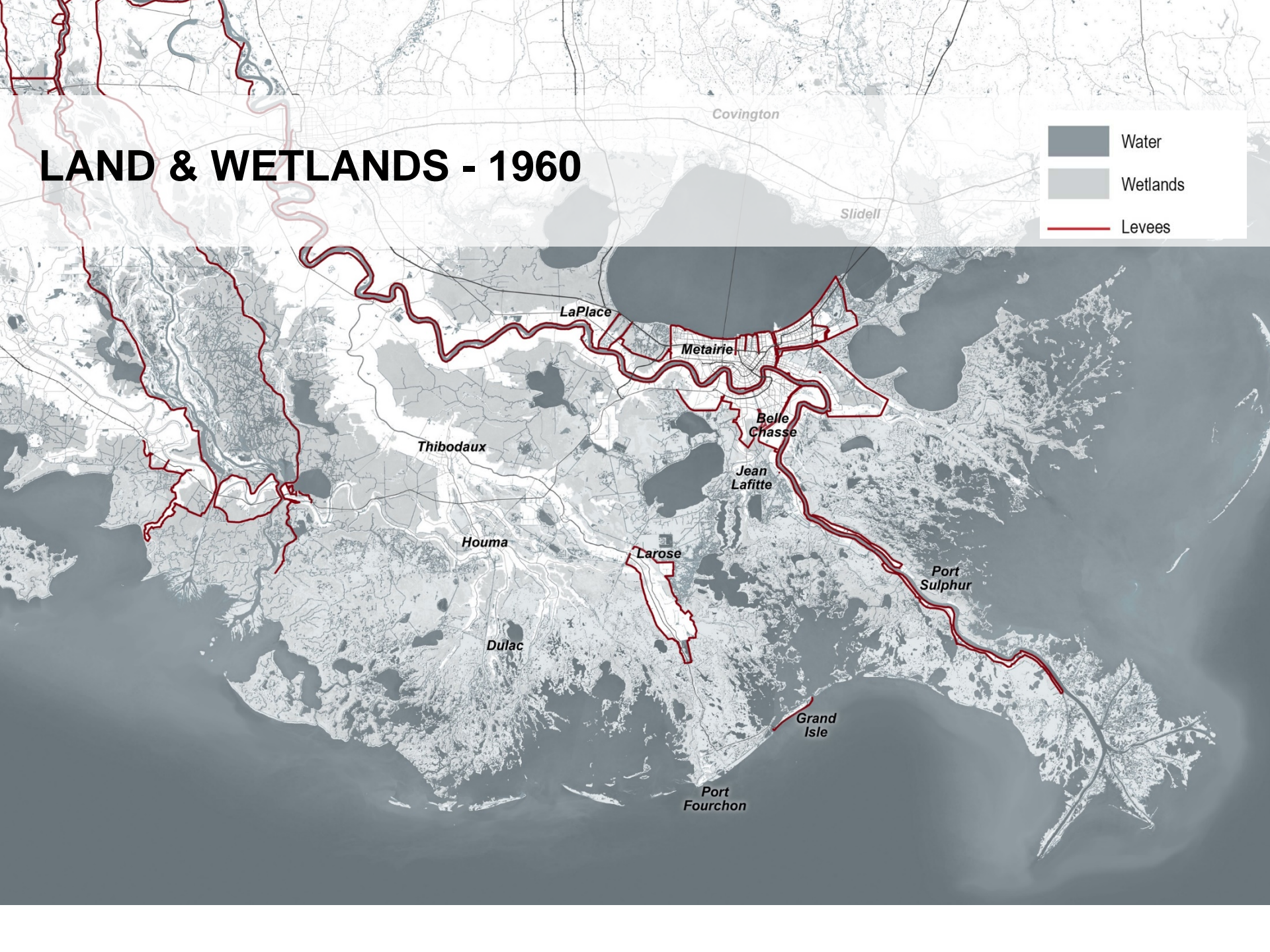
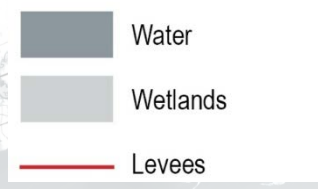


Historic Hurricane Tracks 1854-Present

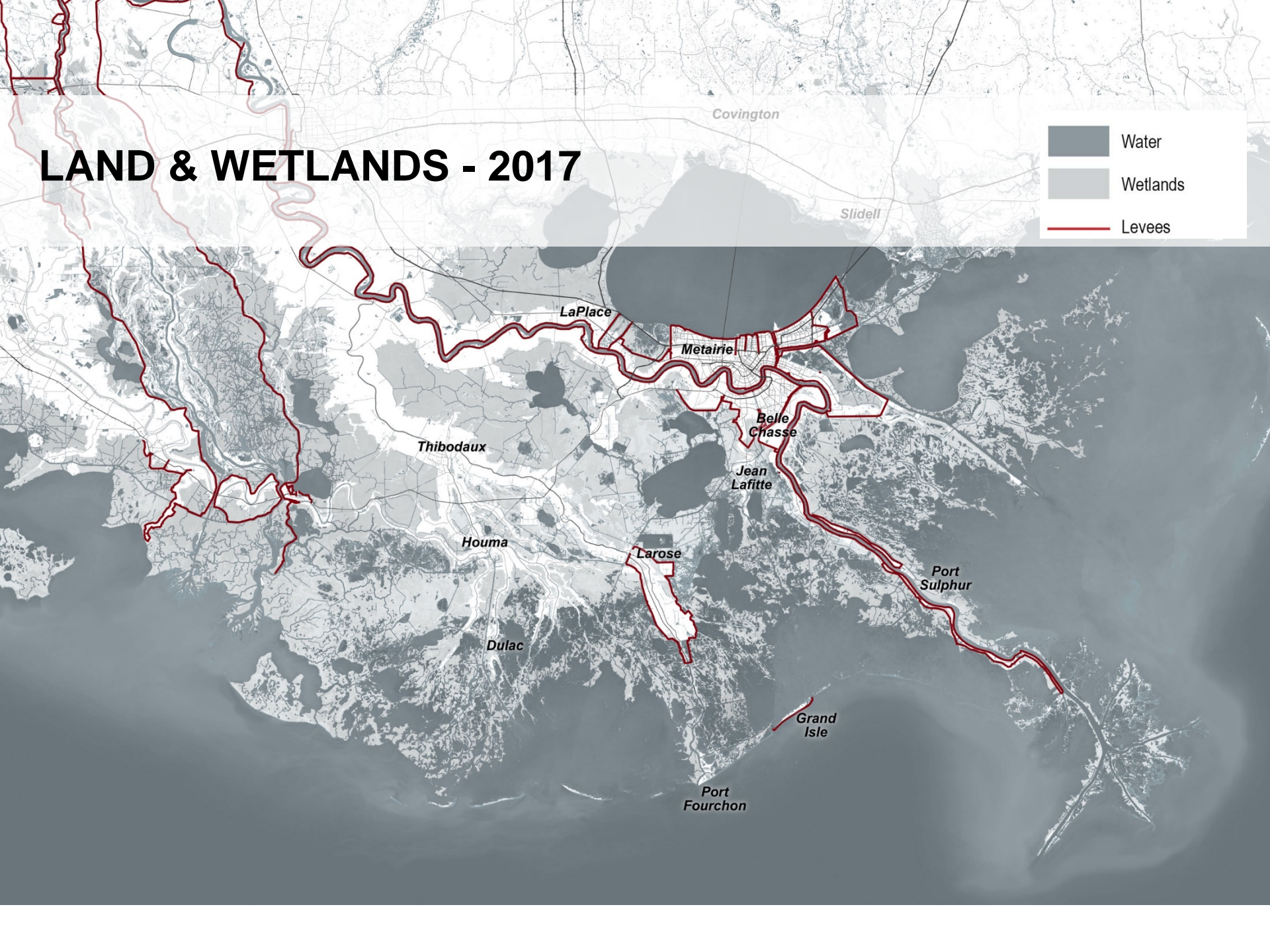
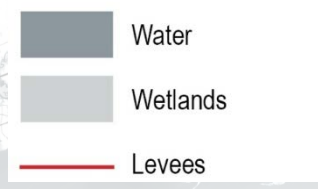
Pos: 31.30, -95.80 Search Center: 30.98, -91.96

- H5
- H4
- H3
- H2
- H1
- TS
- TD
- ET
- N/A

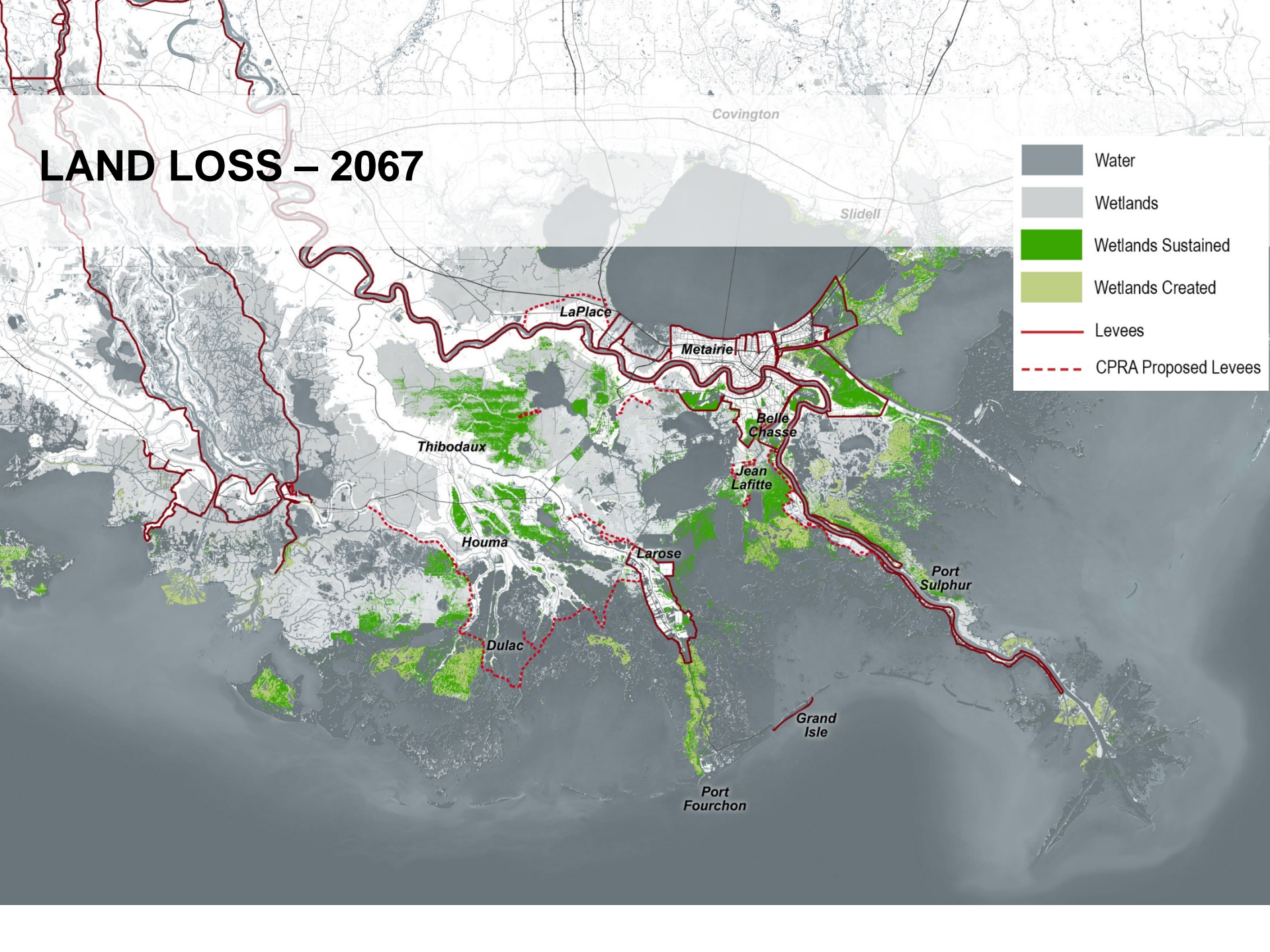
LAND & WETLANDS - 1960



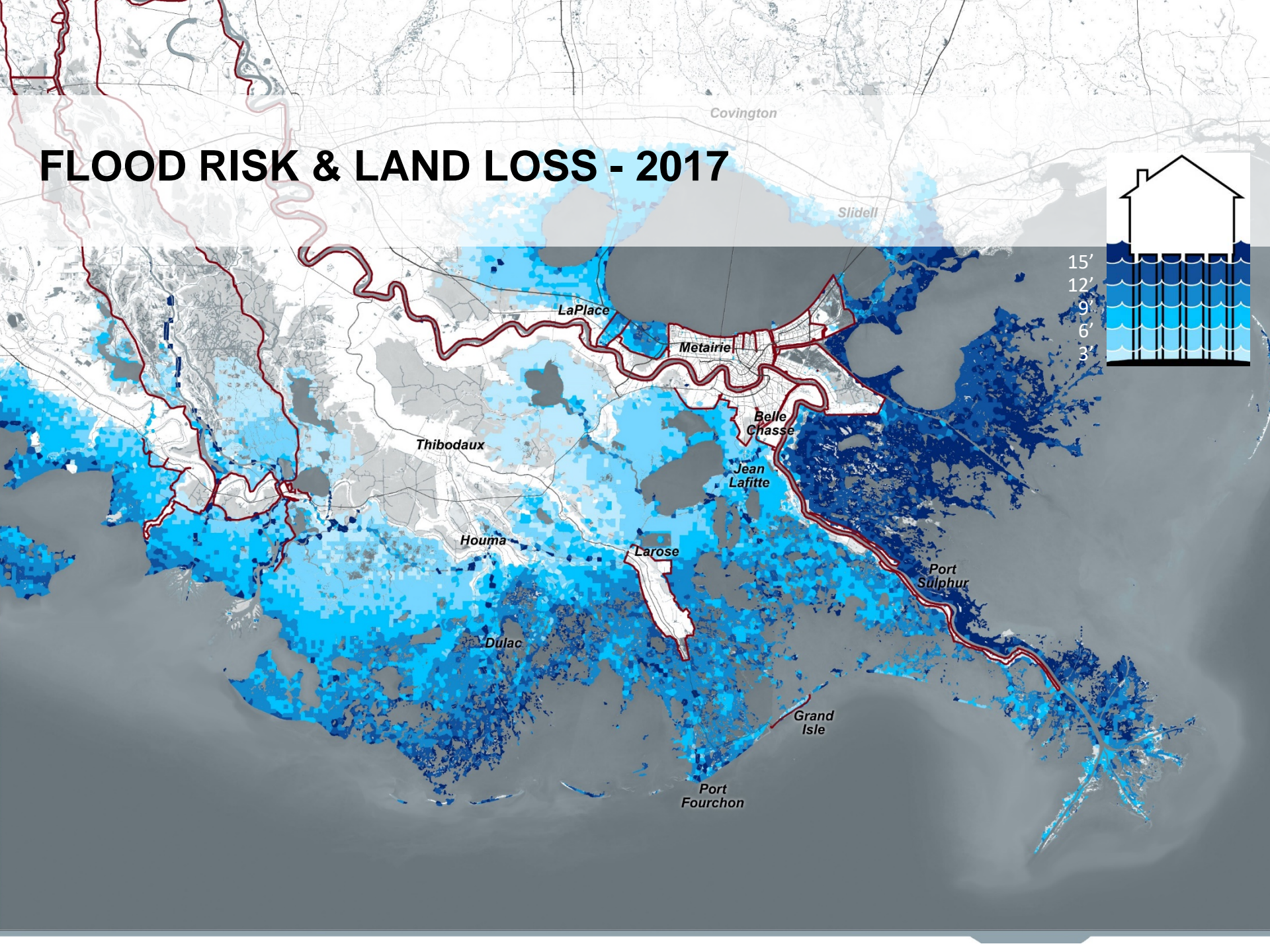
LAND & WETLANDS - 2017



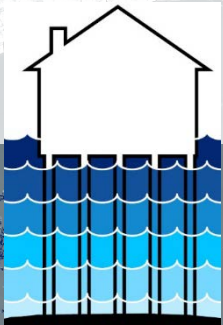
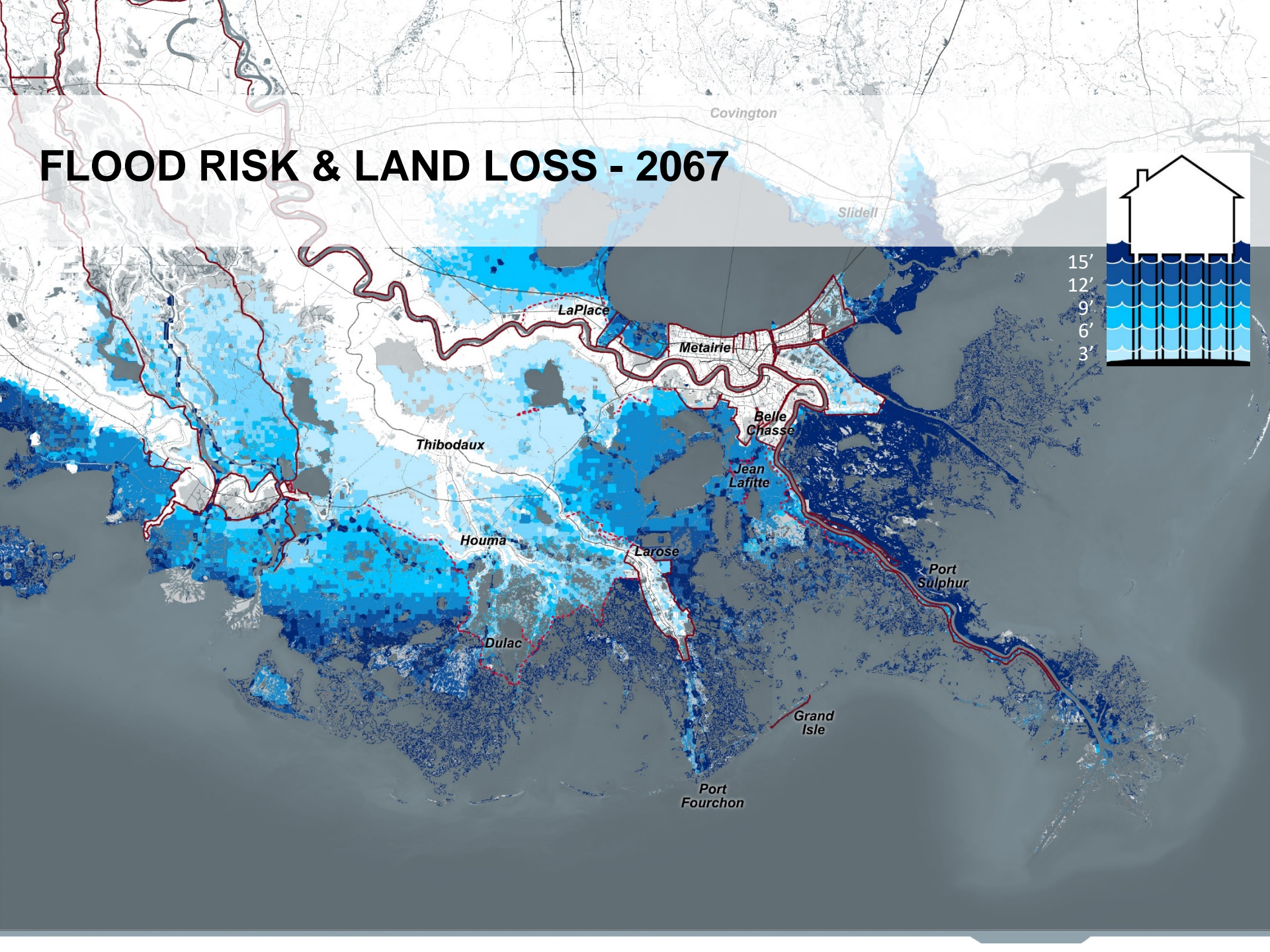
LAND LOSS – 2067



FLOOD RISK & LAND LOSS - 2017



FLOOD RISK & LAND LOSS - 2067



Covington

Slidell

LaPlace

Metairie

Belle Chasse

Jean Lafitte

Thibodaux

Houma

Larose

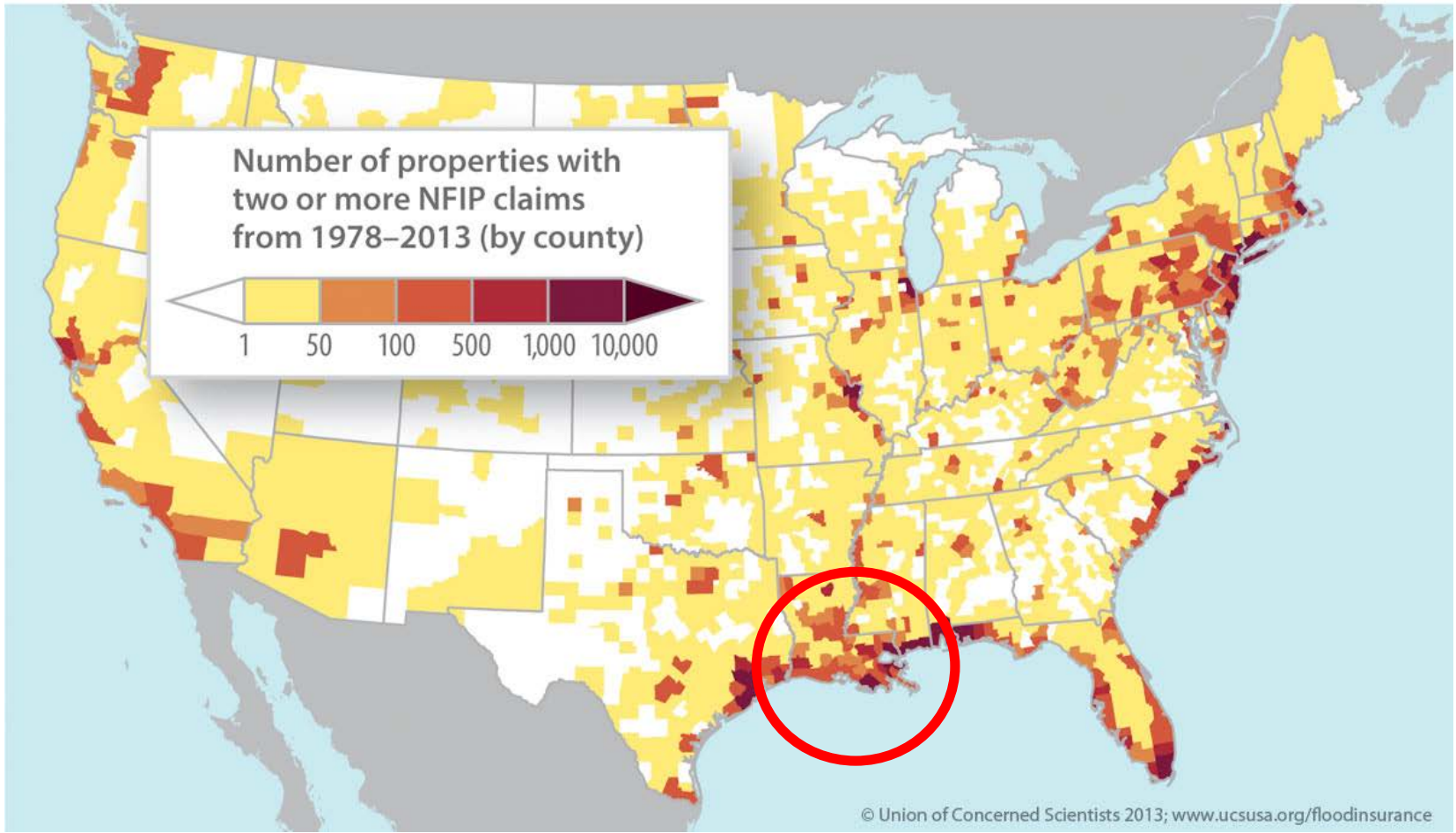
Dulac

Port Sulphur

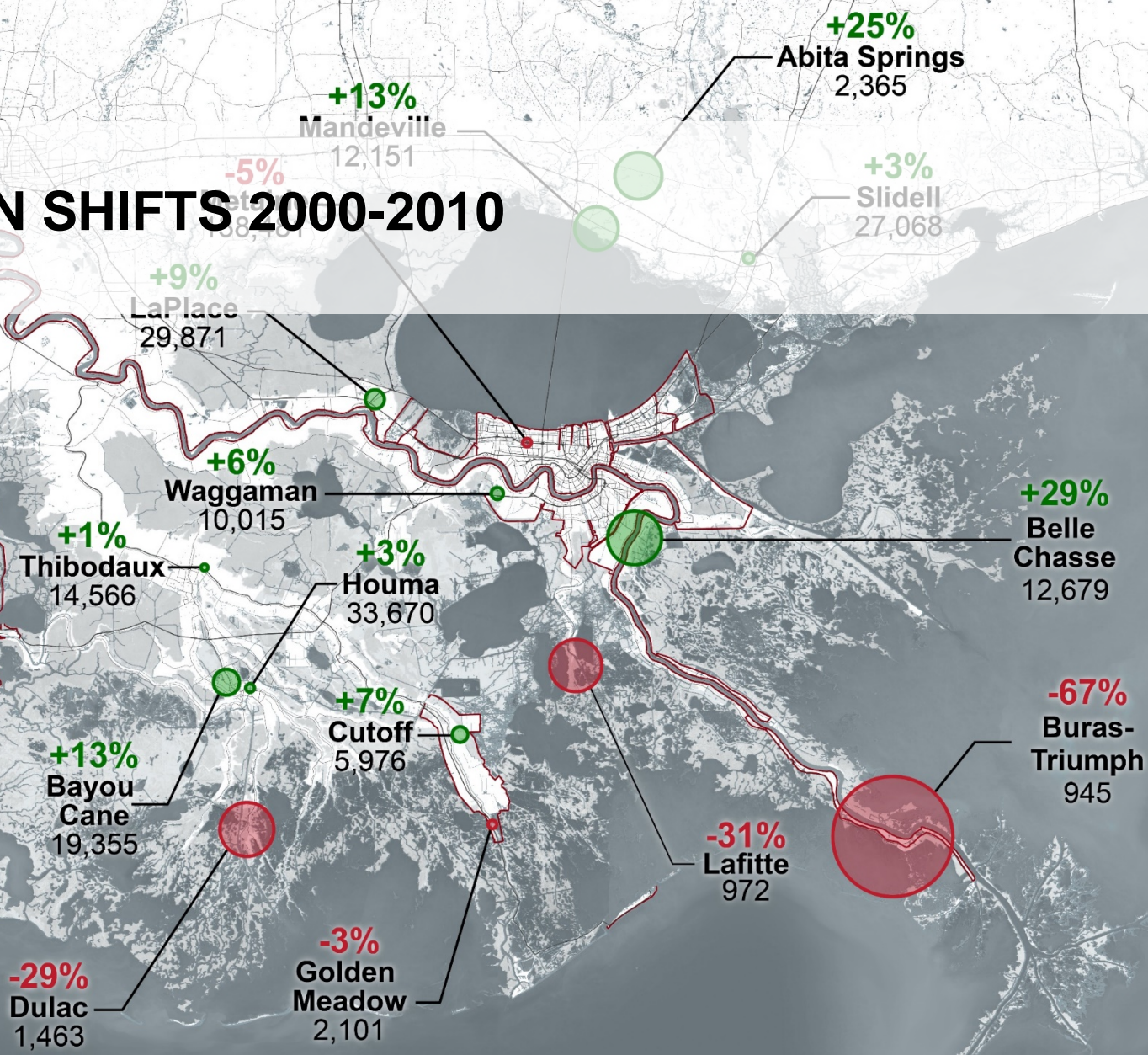
Grand Isle

Port Fourchon

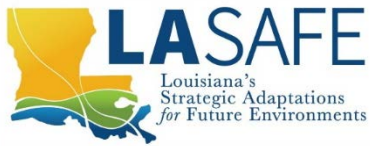
Repetitive-Loss Properties by U.S. County



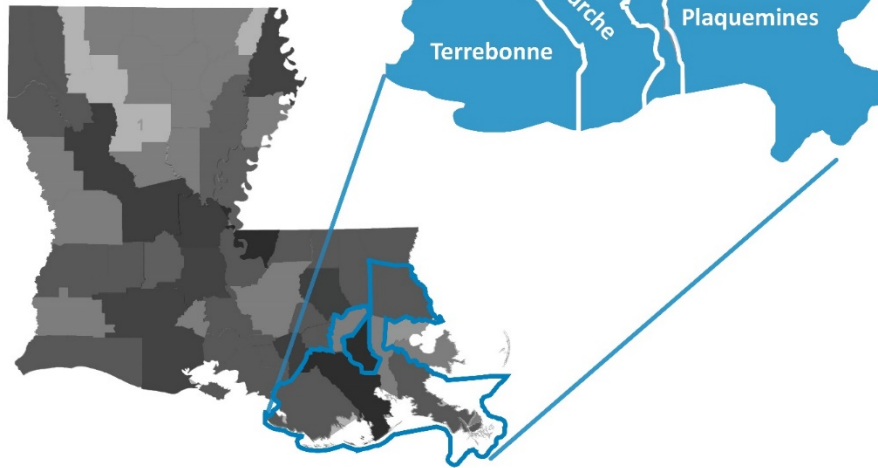
POPULATION SHIFTS 2000-2010



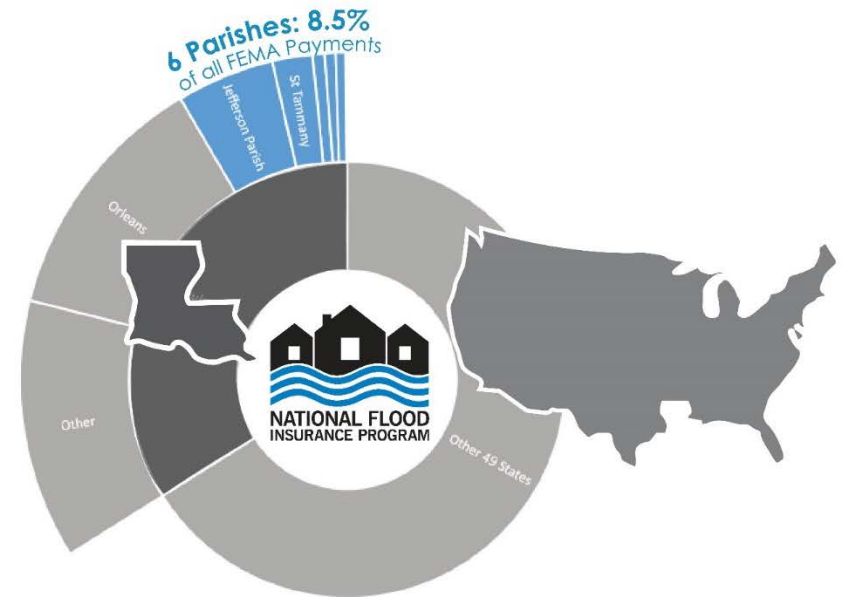
Data prepared by Esri, sourced from U.S. Census Bureau, Census 2000 Summary File 1 and Census 2010 Summary File 1.



FEMA DECLARED DISASTERS



Number of FEMA declared disasters since 2011 in each Parish. Source: FEMA

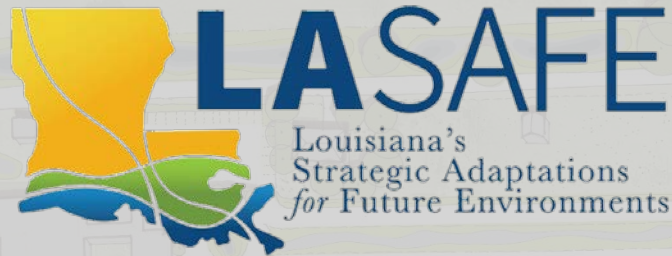


The average household in the six LA SAFE parishes has received over **28x the national average** in FEMA disaster recovery payments between 1978 and 2016.

In Plaquemines, its **268x the national average**.

FEMA's NFIP PAYMENTS, 1978 - 2016

	U.S.	Louisiana	6 LA SAFE Parishes	Plaquemines Parish
Total NFIP Payments	\$57.3 B	\$19.4 B	\$4.9 B	\$361 M
Historic Payments per Household	\$490	\$11,260	\$13,920	\$131,564



**Working together for community resilience,
economic prosperity, and a better quality of life
for everyone in Louisiana.**

2017

Outreach
& Engagement



2018

Plan Development
& Implementation

March & April

**Parishwide
Meeting**



**Identify
Challenges &
Opportunities**

May & June

**Community
Meetings**



**Propose
Strategies**

July & August

**Parishwide
Meeting**



**Evaluate
Vision &
Strategies**

October

**Stakeholder
Round-tables &
Open Houses**



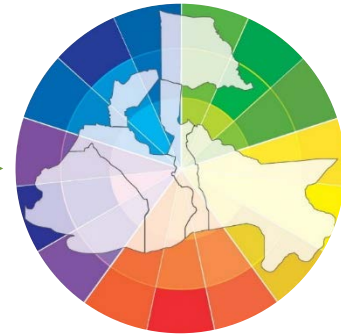
**Policy,
Program, &
Project
Development**

December

**Parishwide
Meeting**



**Project
Evaluation**



**71 Community Meetings
2,835 Individual Participants**

No growth—protect green space

Ferry needs to run more frequently

Turn Red Star Yeast building into mixed-use

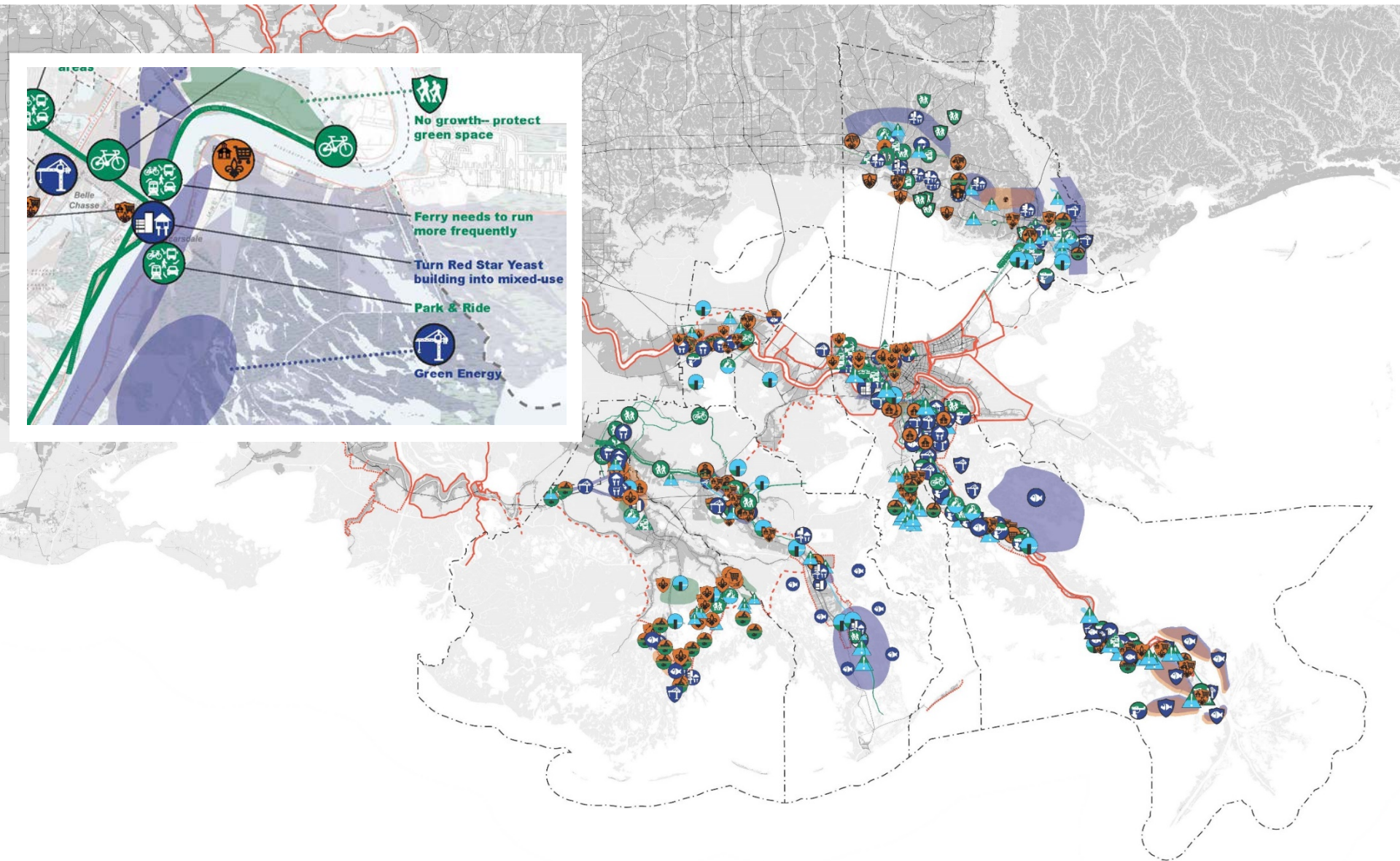
Park & Ride

Green Energy

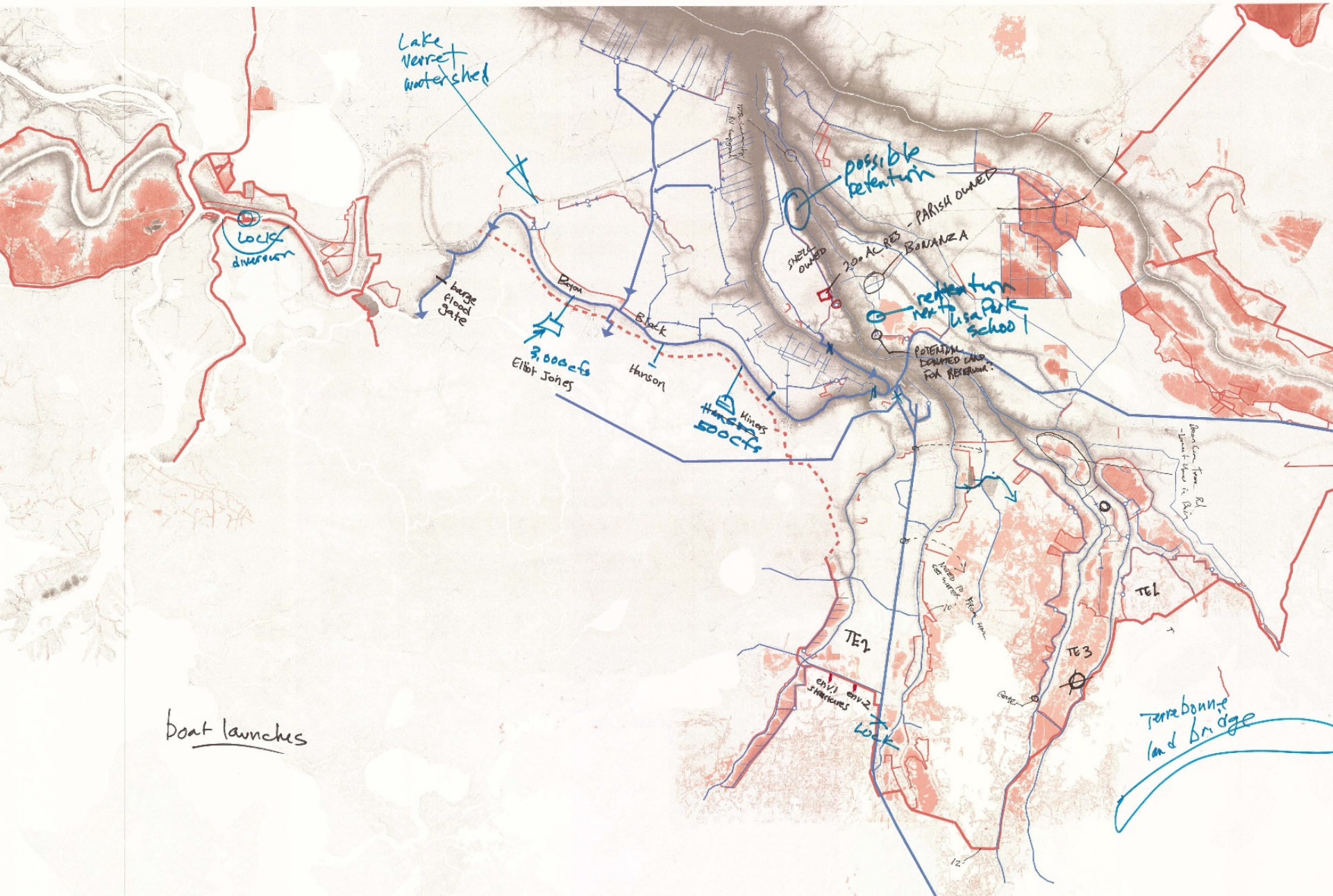
Belle Chasse

arsdale

The inset map shows a river flowing through a landscape. A green line follows the riverbank, with several circular icons: a bicycle, a house with a tree, a house with a person, and a house with a person and a tree. A blue line indicates a path or route. A purple shaded area is visible in the lower left. Text annotations with arrows point to specific features on the map.







Lake Verret watershed

Locks diversion

large flood gate

3,000cfs
Elbit Jones

Hanson

Miners
500cfs

possible retention

PARISH OWNED

200 ACRES BORANZA

retention near to Lisa Park School

POTENTIAL EXHAUSTED CANAL FOR RETENTION

boat launches

TE2

TE3

Terrebonne land bridge

env 1 env 2 structures

lock

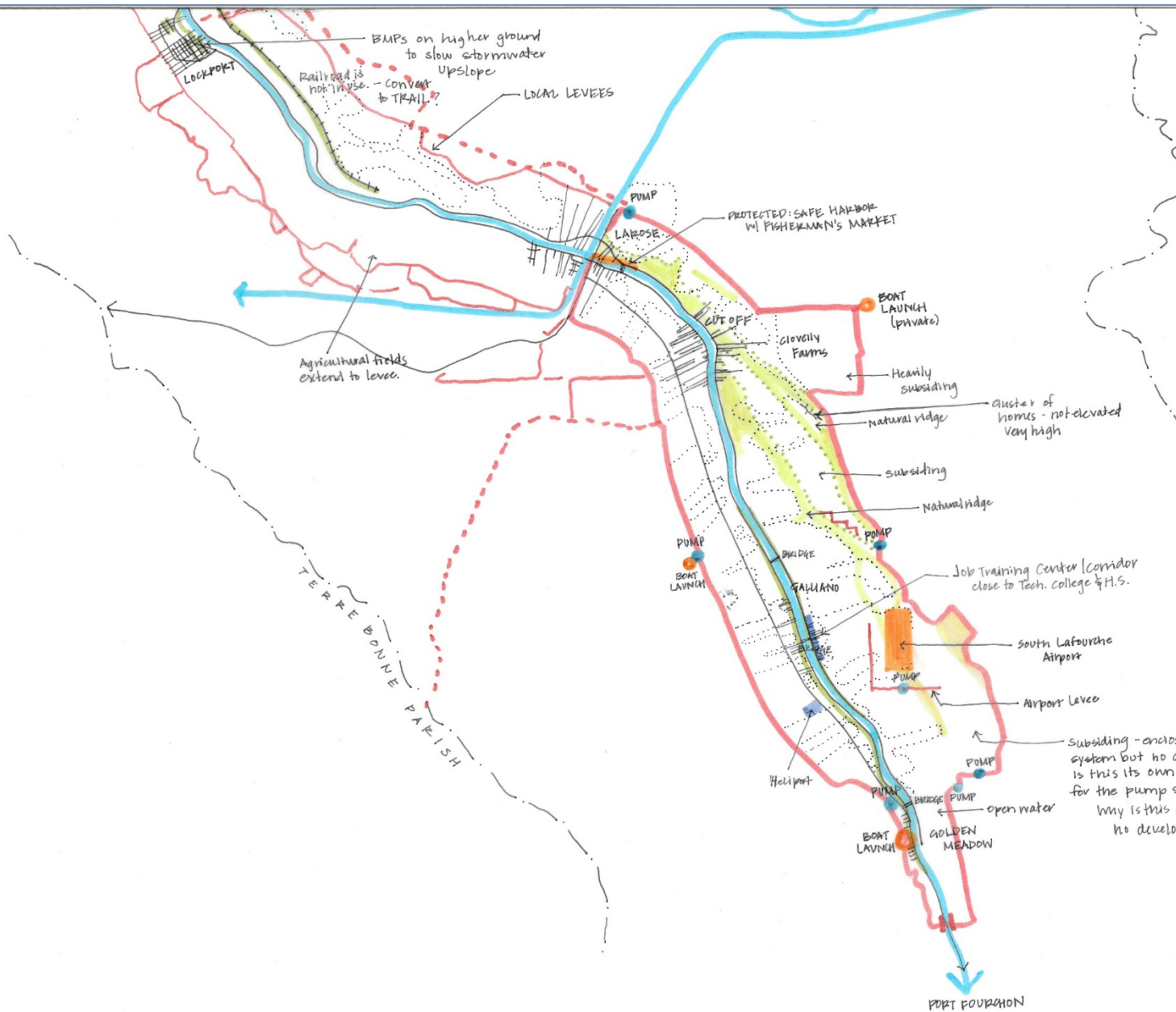
TEL

Johnson from Old
- James & Howard R. Baker

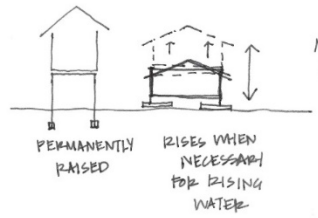
land to Black stone
10
12

center





EXAMPLE OF ADAPTATION:



COMMUNITY CONCERNS:

1. Healthcare
2. Job Training

Subsidizing - enclosed in levee system but no development. Is this its own catch basin for the pump station? Why is this area leveed off - no development here?

Community Ranking
 Lowest ranked by community

Highest Ranked by community

St. Tammany



St. John



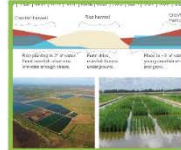
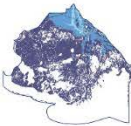
Plaquemines



Jefferson

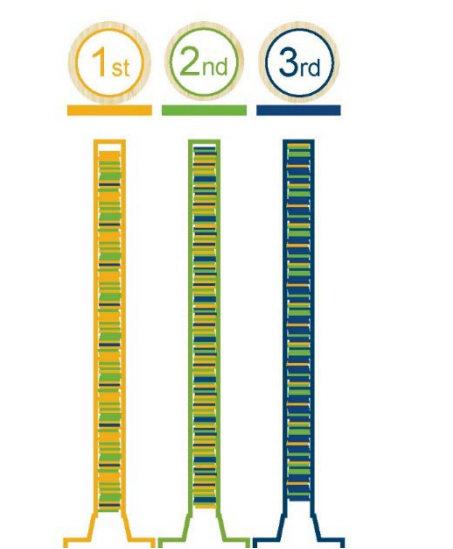


Terrebonne



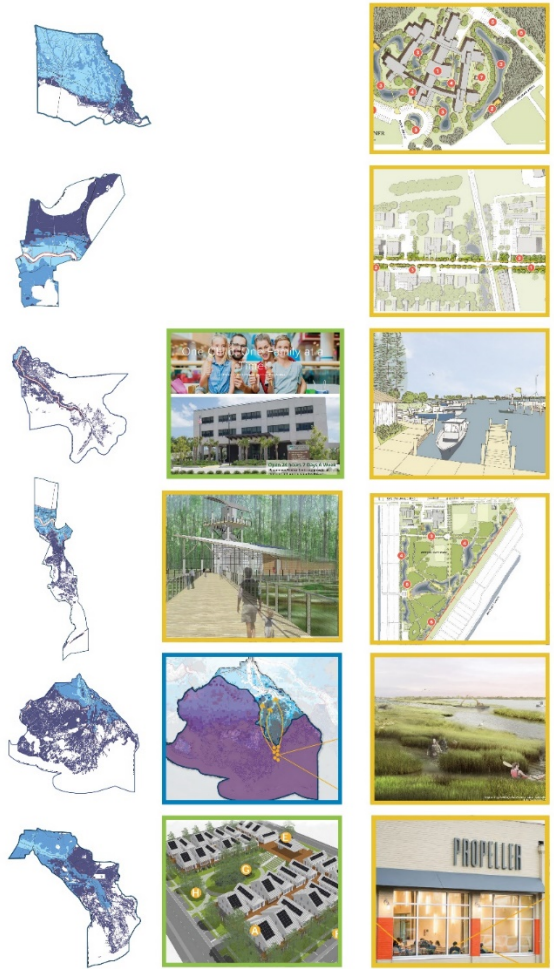
Lafourche





Selected Project Portfolio

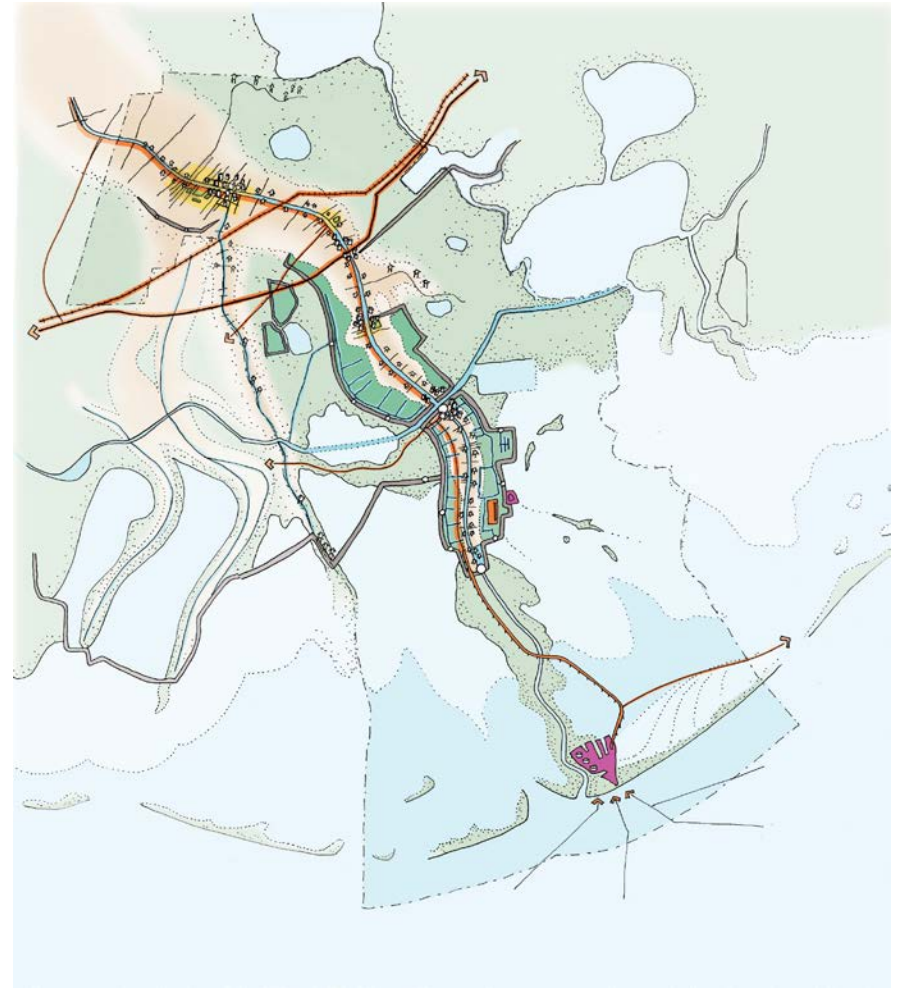
Most popular strategies



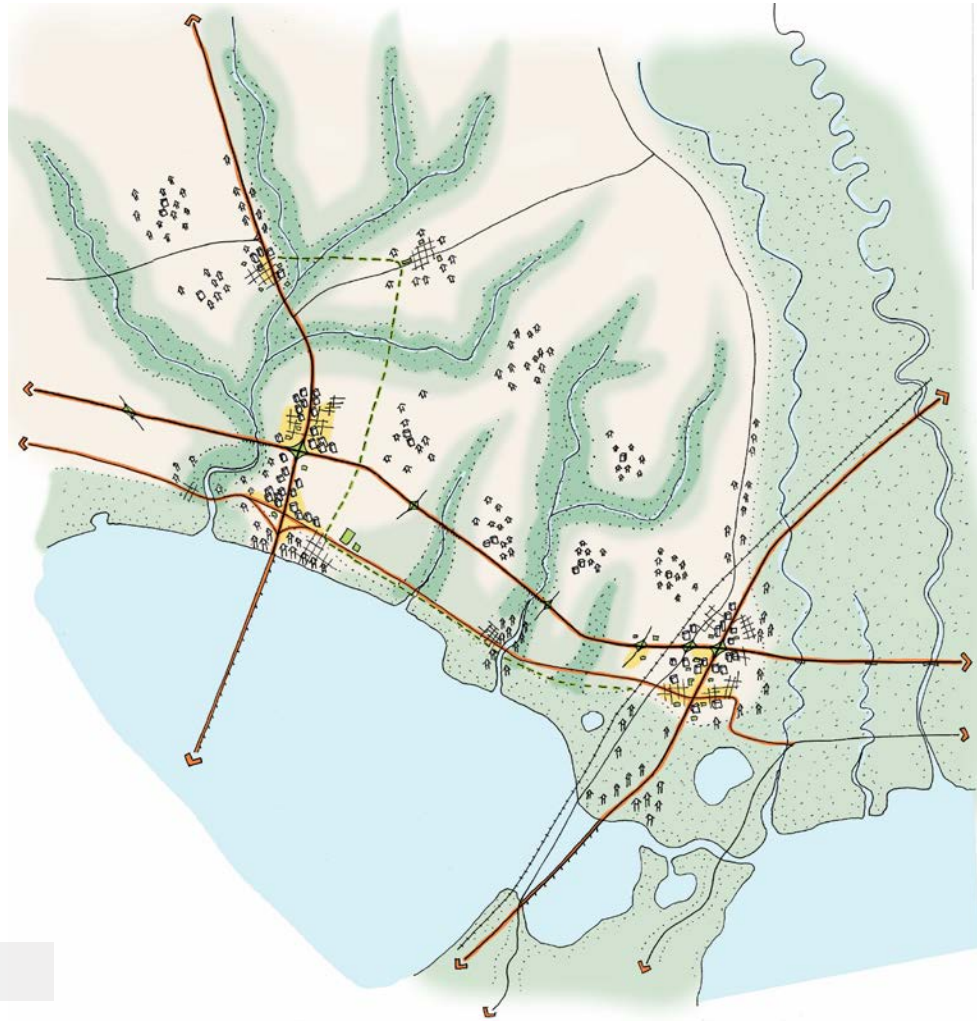
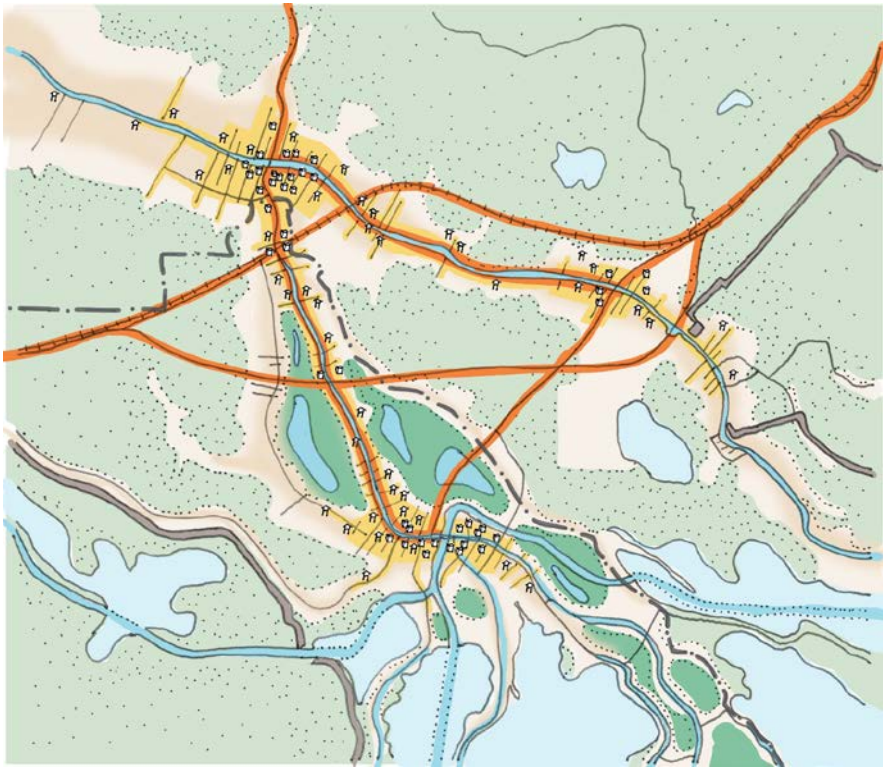
- Safe Haven Blue-Green Campus & Trails
- Airline & Main Complete Streets
- Harbor of Refuge
- Mental Health & Substance Abuse
- Gretna Resilience District Kickstart
- Louisiana Wetland Education Center
- Buyouts for Permanent Resident Households Outside Morganza
- Lake Boudreaux Living Mitigation
- Emerging Industry Business Incubator
- Resilient Housing Prototype

- Public Boat Docks
- Cross-Parish Stormwater Management
- Coastal Restoration and Jobs Training
- Improved Drainage System
- Job Training Programs
- Increased Affordable Housing Options
- Drainage Requirements for New Developments
- Cultural Camps & After School Programs
- Culvert & Ditch Maintenance
- Commuter & Regional Rail
- Complete Streets
- Community Gardens & Planting Programs
- Incentivize Essential Service Providers
- Medium Density Housing
- Improve Public Transit Across Parish Lines
- Create a full-time drain Maintenance Department
- Restore Abandoned Property to Natural Condition
- Expand Boat Harbors

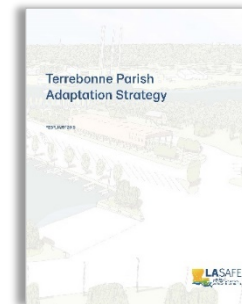
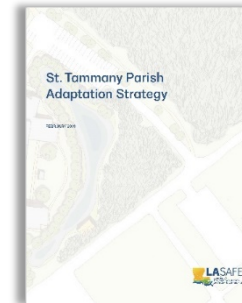
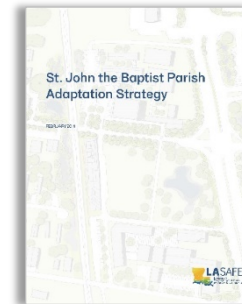
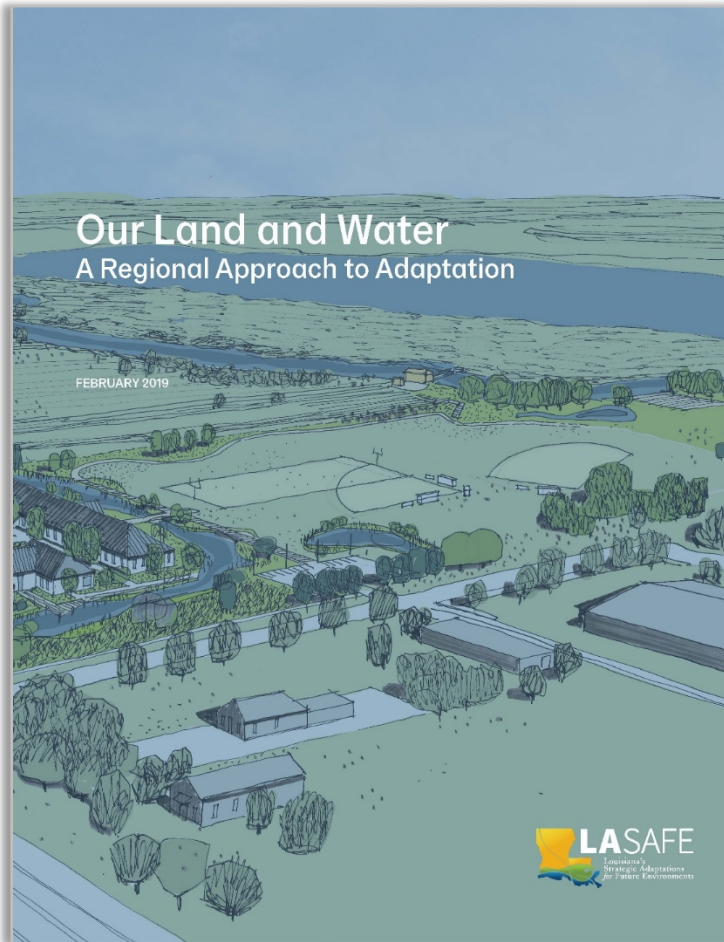
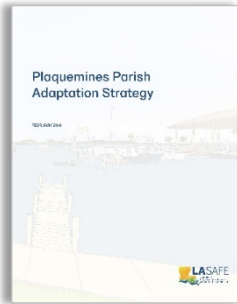
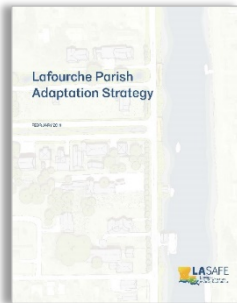
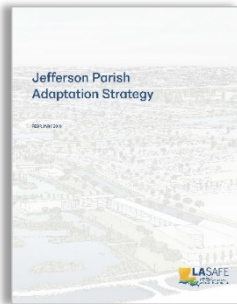




Planning Around Supply Chains and Industries

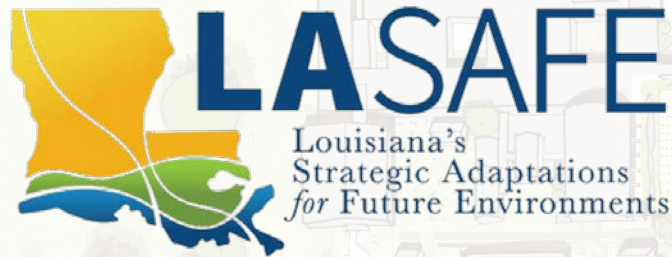


Planning for Future Growth Corridors on High Ground



Six Parish Plans, One Regional Approach

LA SAFE & Community Organizing



Environmental and Energy Study Institute // 11.6.19

Mathew D. Sanders, AICP

Resilience Policy & Program Administrator
Louisiana Office of Community Development



LOUISIANA
Office of
COMMUNITY
DEVELOPMENT

Liz Williams Russell

Coastal Community Resilience Director
Foundation for Louisiana



Foundation
for Louisiana

At work for resilient communities.

Elder Donald Bogen, Jr.

Organizer
Bayou Interfaith Shared Community Organizing



Justin Kozak, PhD, CFM

Researcher & Policy Analyst
Center for Planning Excellence (CPEX)



CENTER for PLANNING EXCELLENCE



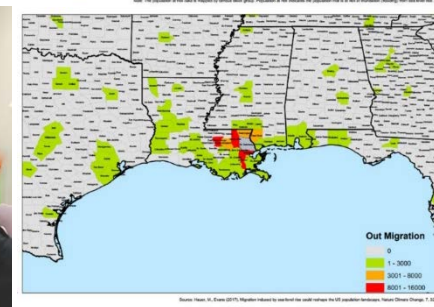
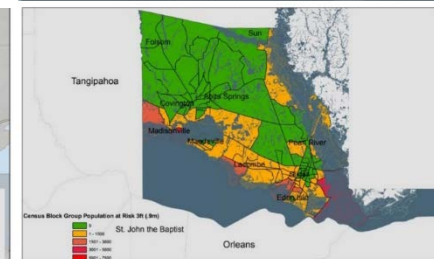
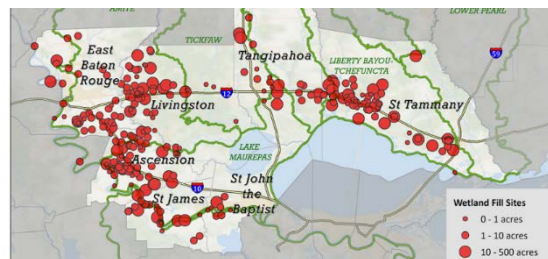
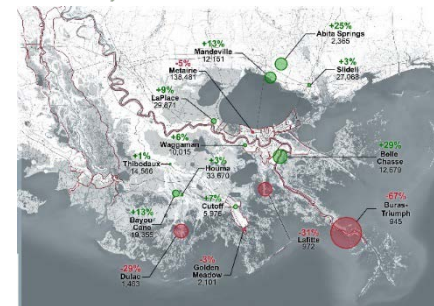
THE DATA CENTER



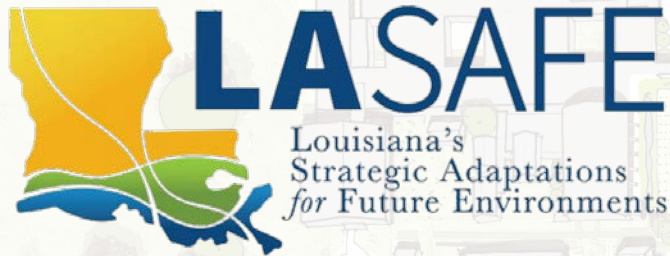


Philanthropy and Government Action

- Civic Engagement, Leadership Development and Relationship Infrastructure
- Research and Analysis towards necessary policies and practices
- Storytelling to connect experiences of change to narratives for action



LA SAFE from the Community's Perspective



Environmental and Energy Study Institute // 11.6.19

Mathew D. Sanders, AICP

Resilience Policy & Program Administrator
Louisiana Office of Community Development



LOUISIANA
Office of
COMMUNITY
DEVELOPMENT

Liz Williams Russell

Coastal Community Resilience Director
Foundation for Louisiana



Foundation
for Louisiana

At work for resilient communities.

Elder Donald Bogen, Jr.

Organizer
Bayou Interfaith Shared Community Organizing



Justin Kozak, PhD, CFM

Researcher & Policy Analyst
Center for Planning Excellence (CPEX)



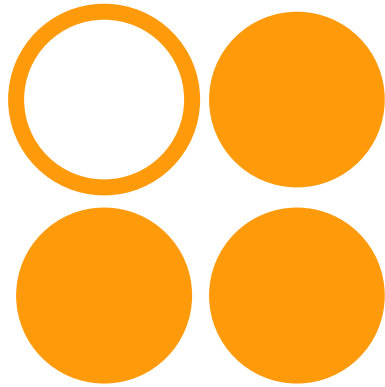
CENTER for PLANNING EXCELLENCE

An aerial photograph of a coastal region, likely a delta or marshland. The image shows a complex network of waterways, including rivers and canals, interspersed with green and brownish land. A road or path runs through the center, and some buildings are visible in the lower right quadrant. The overall scene depicts a vulnerable coastal environment.

IN THEIR WORDS

*"When you have to relocate, it is like a death.
It plays on your mental and physical well-being."*

MOVING AWAY



1 in 4

*know family
who have left*



Survey funded by National Association of Realtors

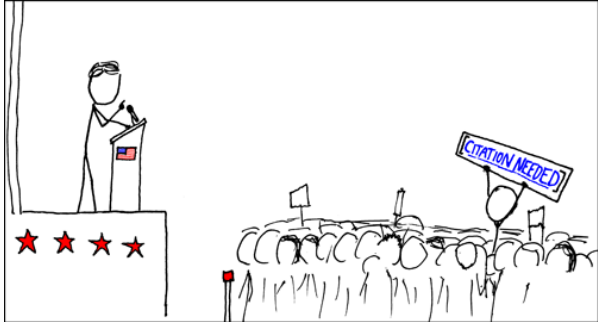
LA SAFE: LONG TERM IMPACTS ON SOCIAL NETWORKS



Community



Faith Leaders

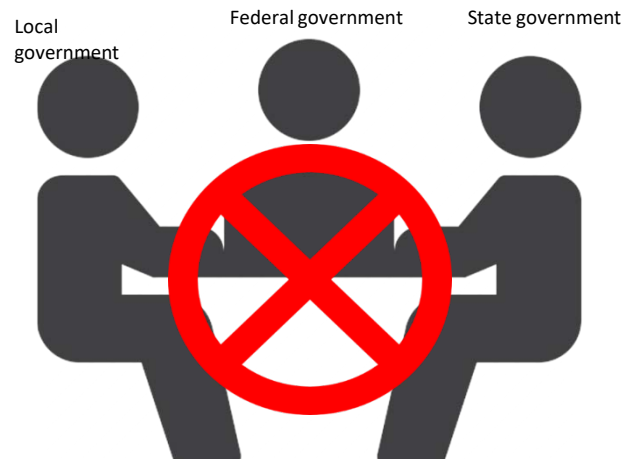


Politician



Healthy community debate

Government Led Planning often lacks inclusiveness

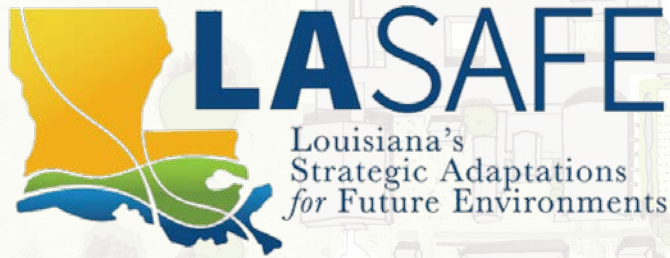


Communities are often asked to comment on plans they didn't make

The LA SAFE Approach: Was It Effective?



The Need for Transformative Policy & Governance



Environmental and Energy Study Institute // 11.6.19

Mathew D. Sanders, AICP

Resilience Policy & Program Administrator
Louisiana Office of Community Development



Liz Williams Russell

Coastal Community Resilience Director
Foundation for Louisiana



Elder Donald Bogen, Jr.

Organizer
Bayou Interfaith Shared Community Organizing



Justin Kozak, PhD, CFM

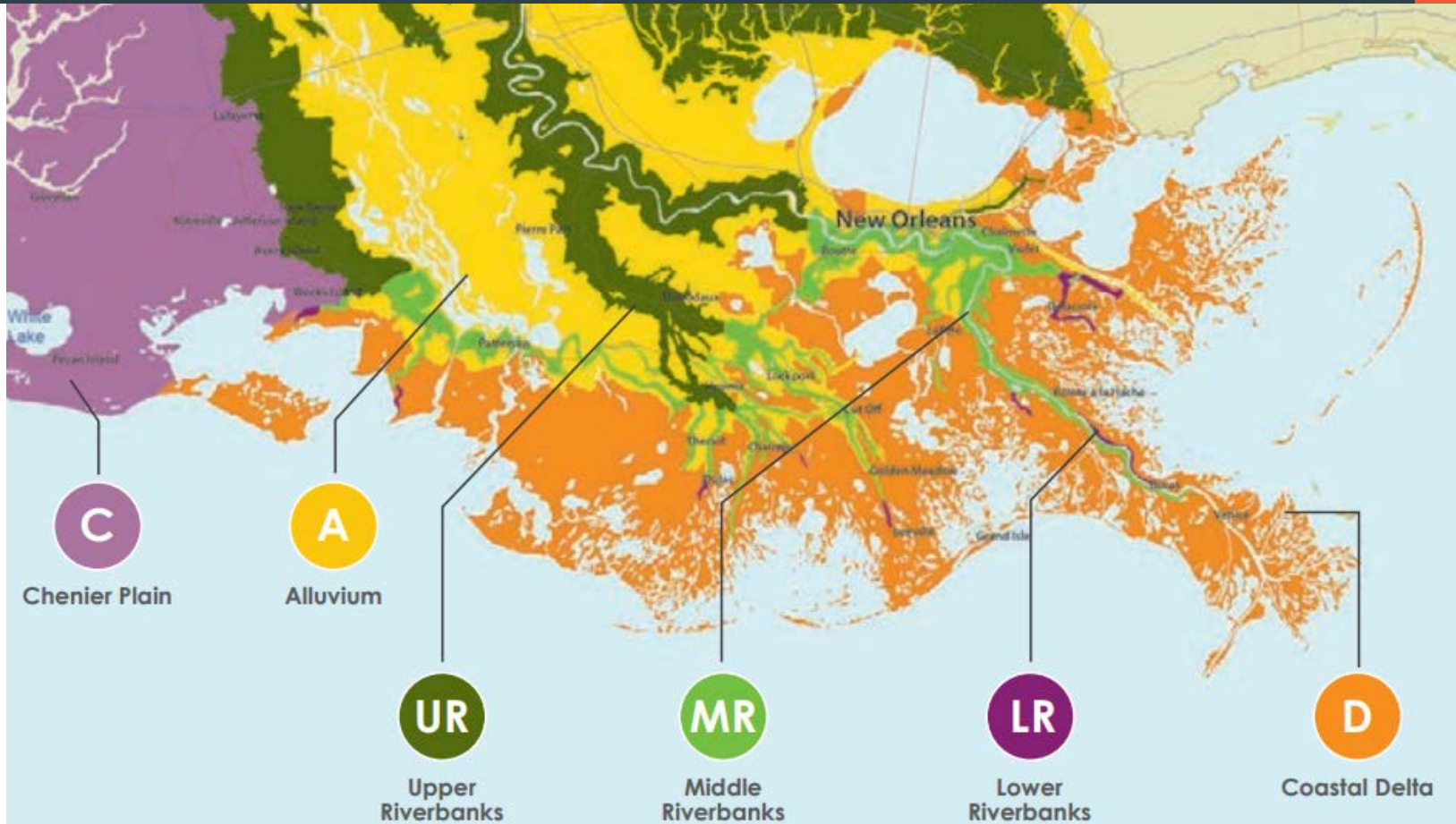
Researcher & Policy Analyst
Center for Planning Excellence (CPEX)



The Disconnect Between LA SAFE Planning and Local Adoption



The Challenge: Lack of capacity and local context



How do we buy down our risk?

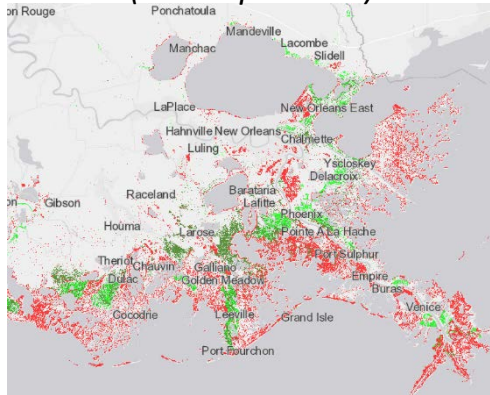


Scenario Planning

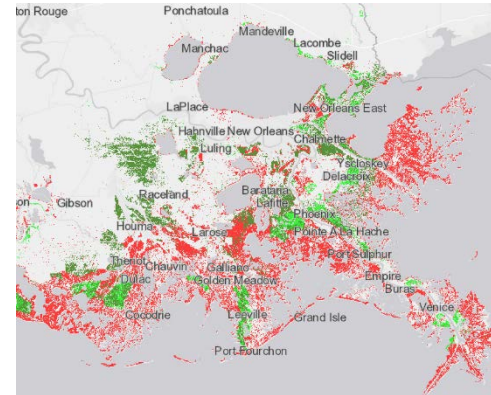


With Coastal
Master Plan

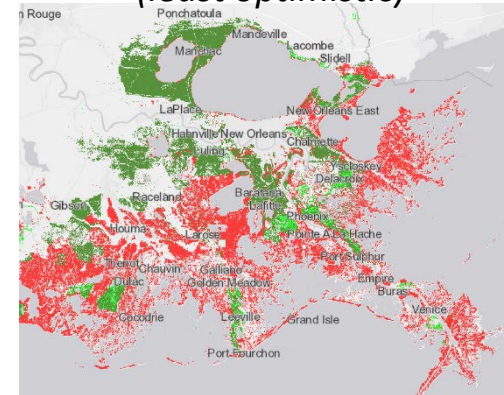
Low Scenario
(most optimistic)



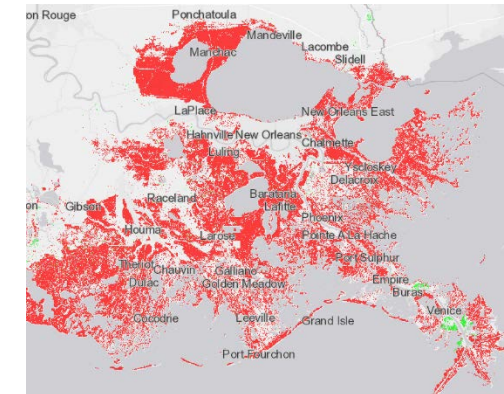
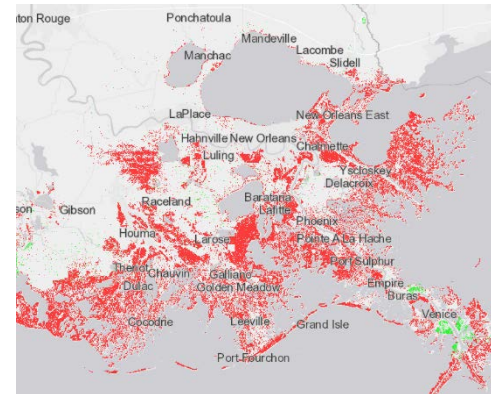
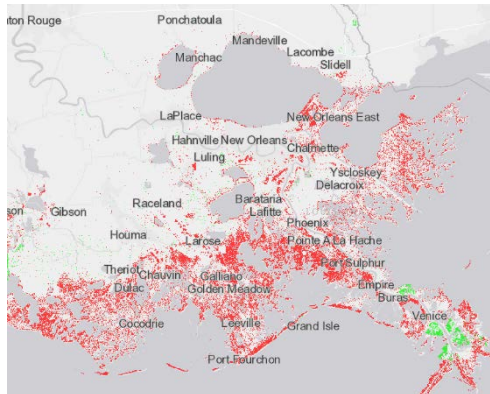
Medium Scenario



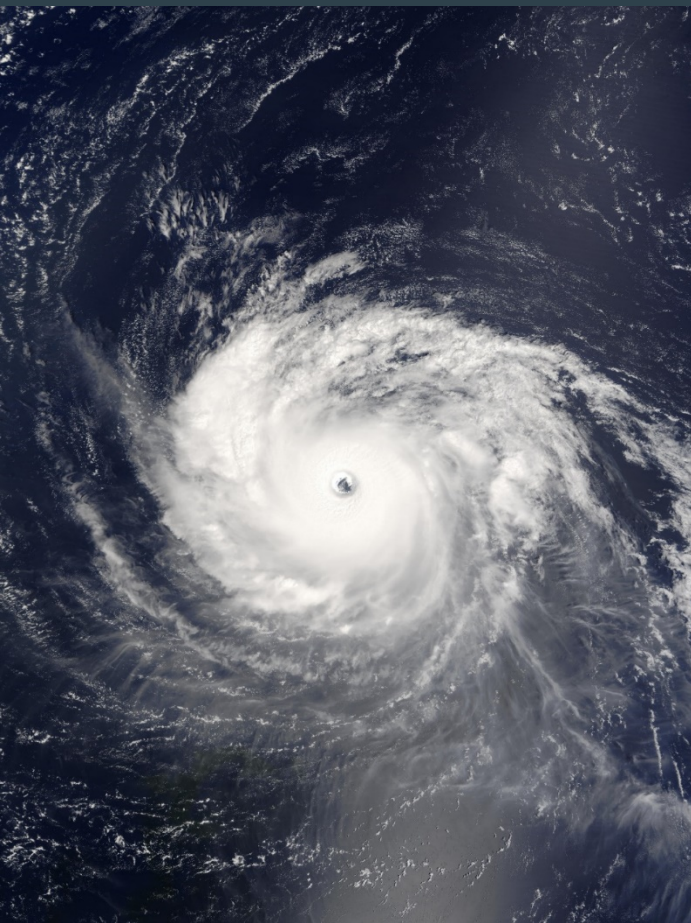
High Scenario
(least optimistic)



Without Plan



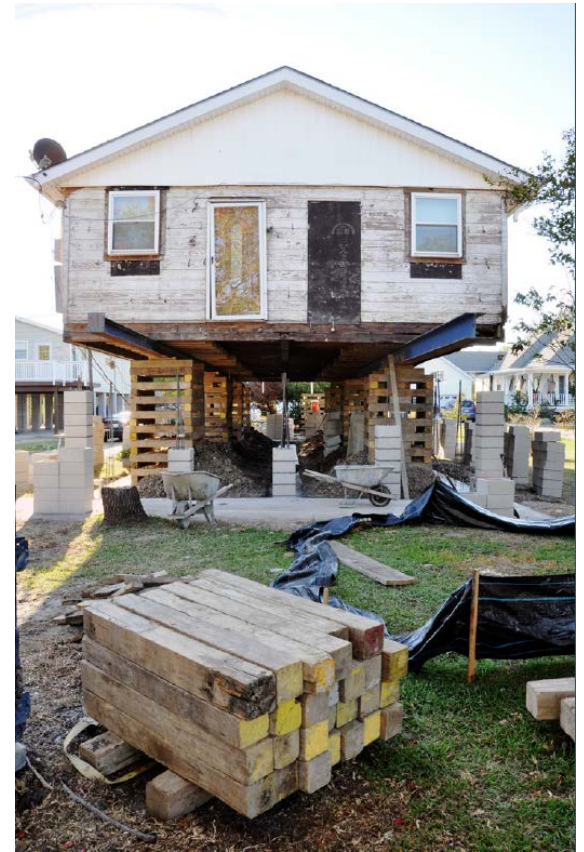
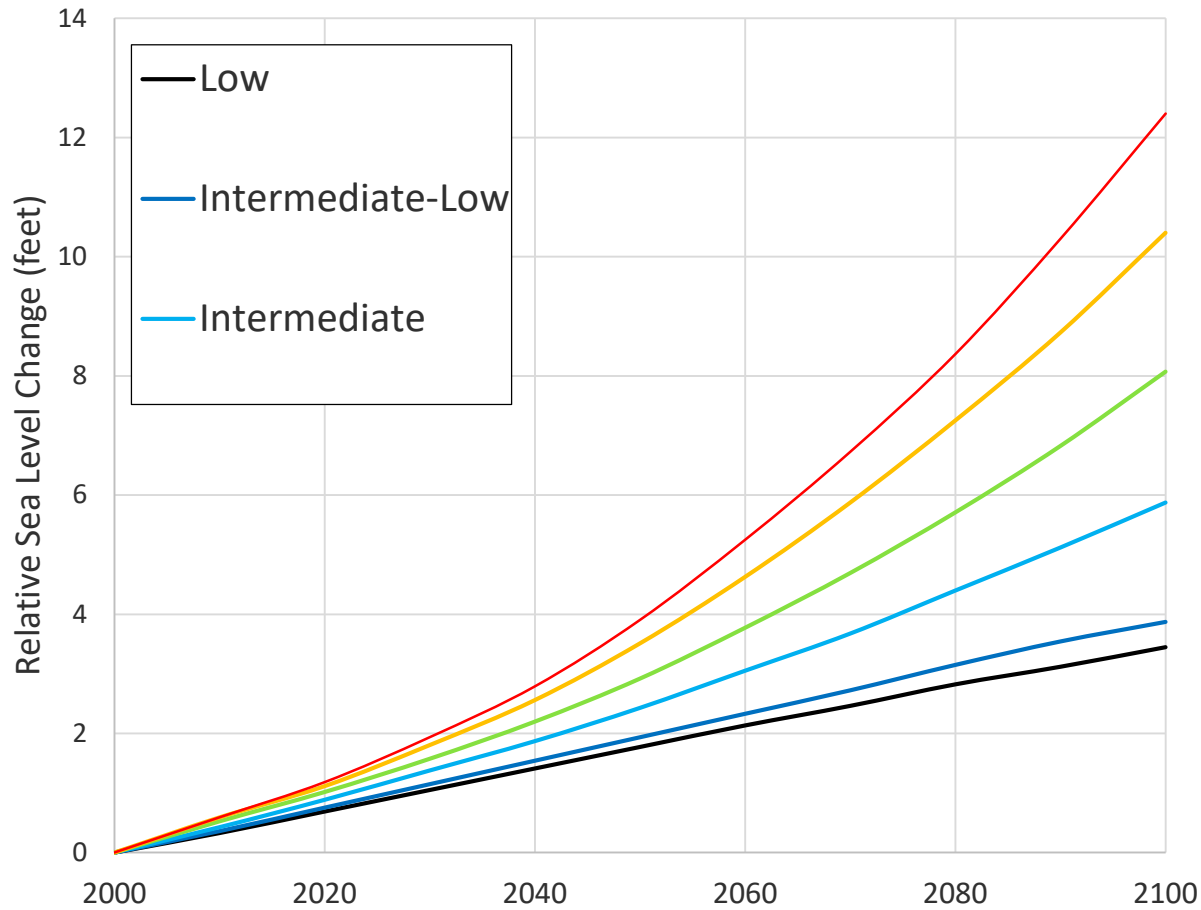
We're used to responding to disasters



Collaboration, Communication, Coordination



Slower moving drivers of change



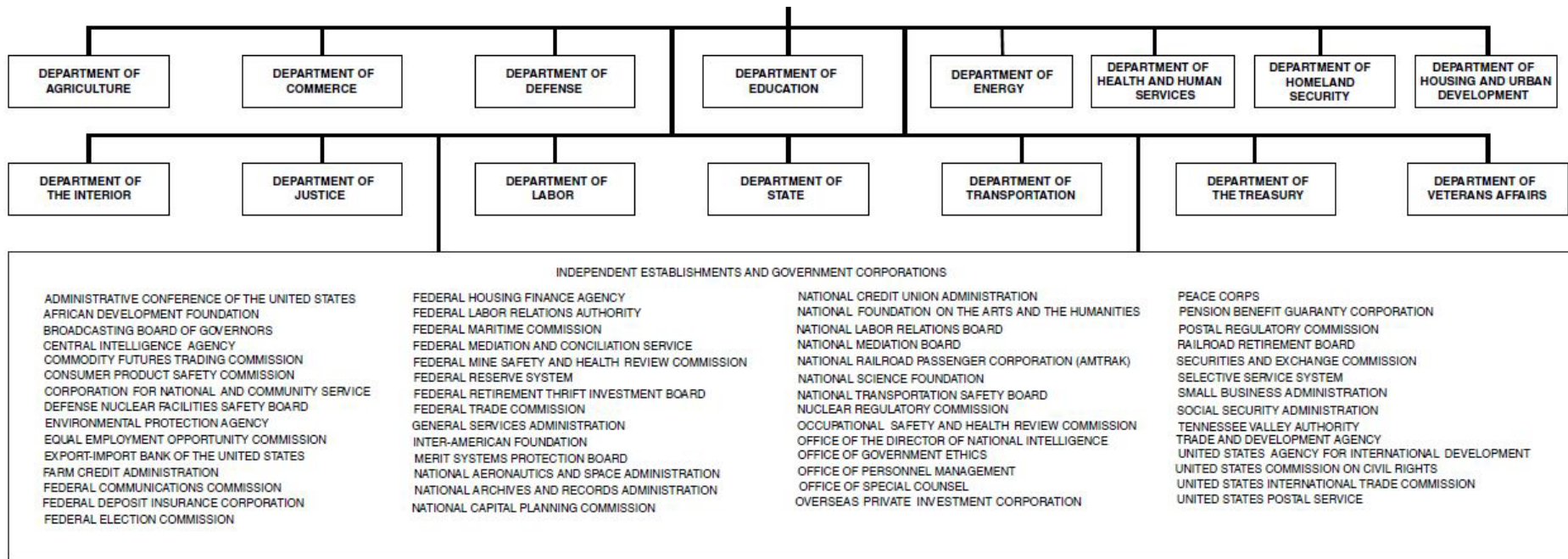
Data source: NOAA Technical Report NOS CO-OPS 083.

A collection of rational decisions adding up to an irrational result

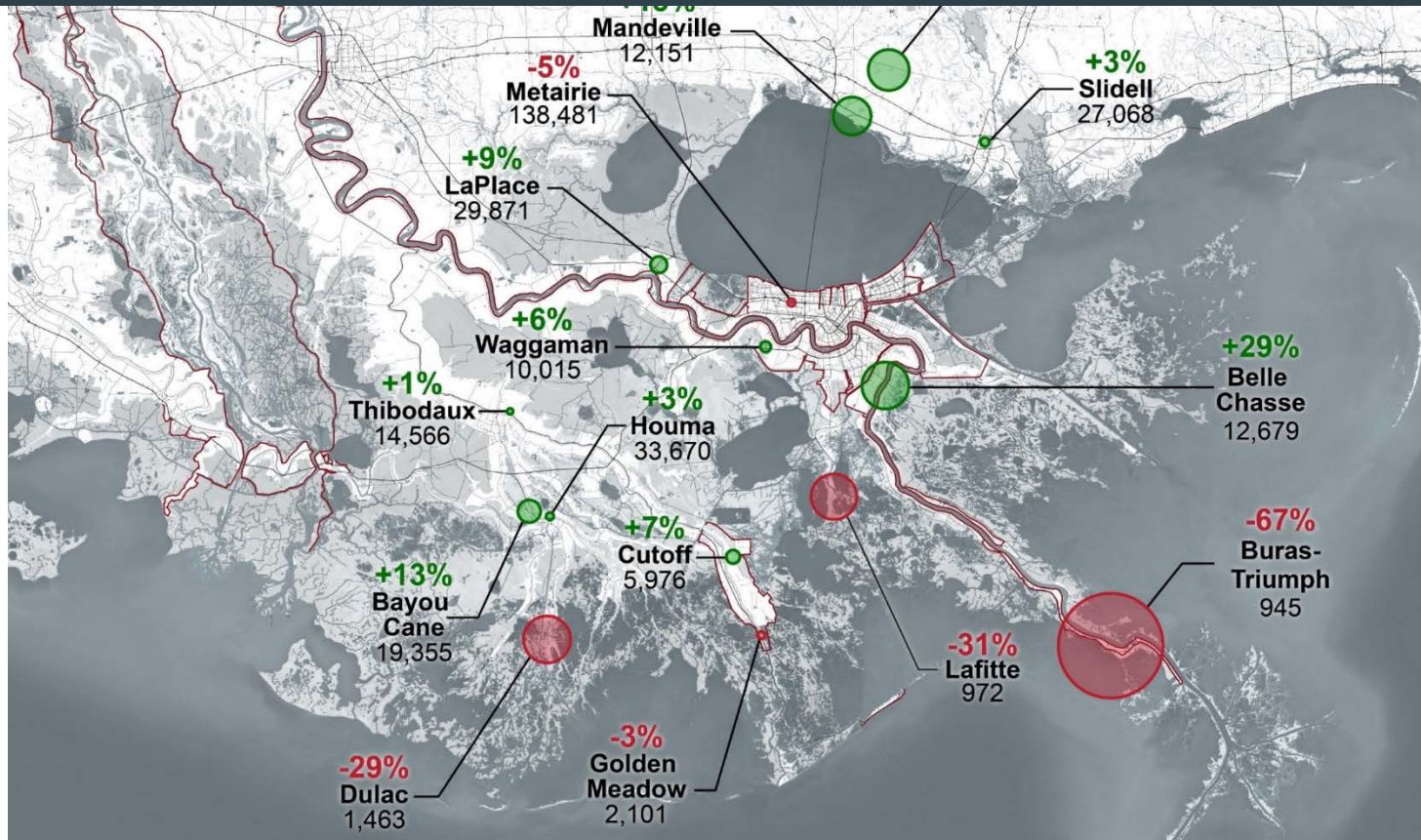


Society requires stability in our institutions

Adaptation requires flexibility

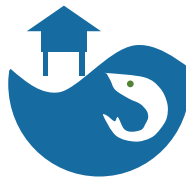


Who should be thinking about the implications?



Data prepared by Esri, sourced from U.S. Census Bureau, Census 2000 Summary File 1 and Census 2010 Summary File 1.

Data prepared by Esri, sourced from U.S. Census Bureau, Census 2000 Summary File 1 and Census 2010 Summary File 1.



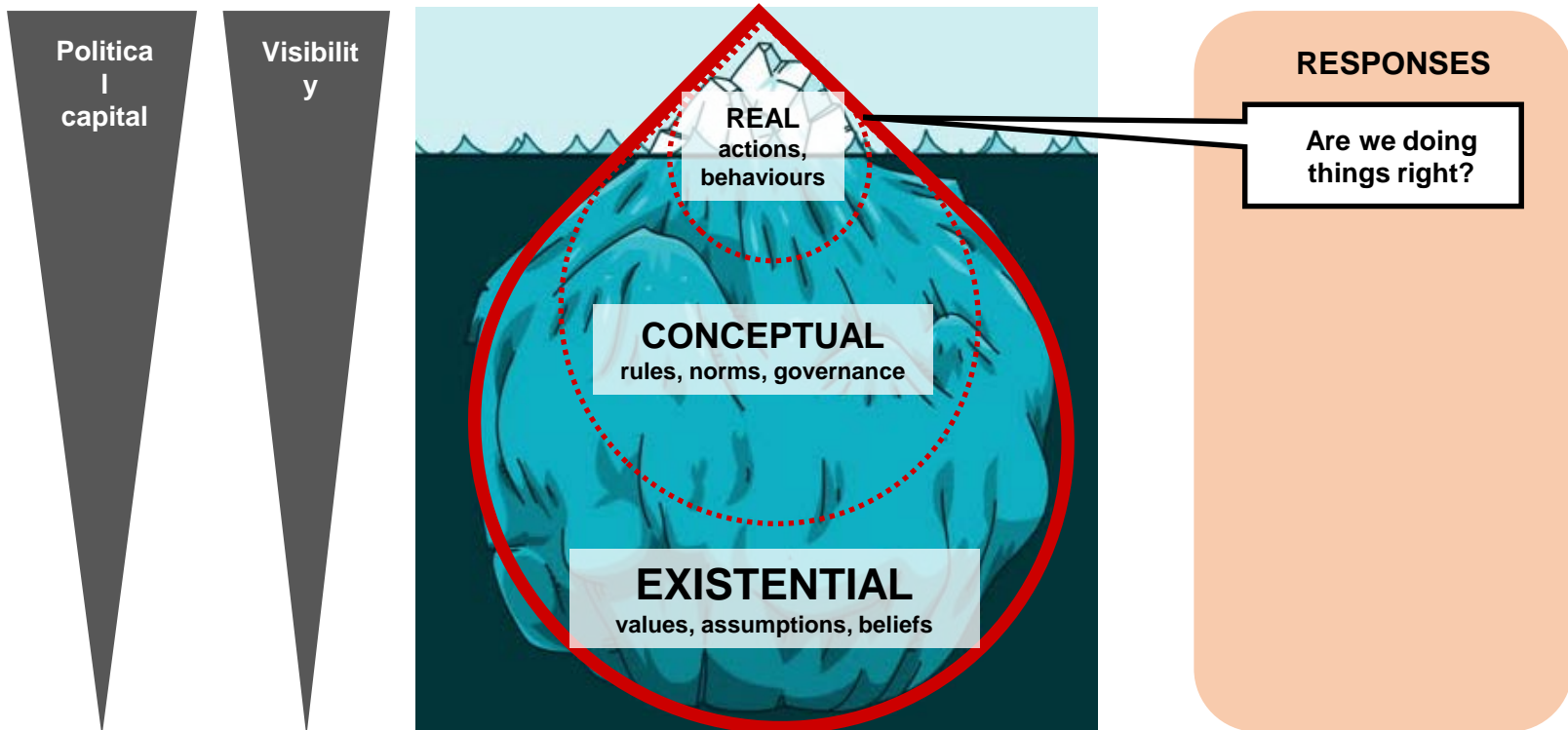
Rethinking Government's Approach to Climate Adaptation Planning

LA SAFE – Terrebonne Parish, LA Moderate Risk – 50 year vision



Rethinking government's approach to adaptation planning

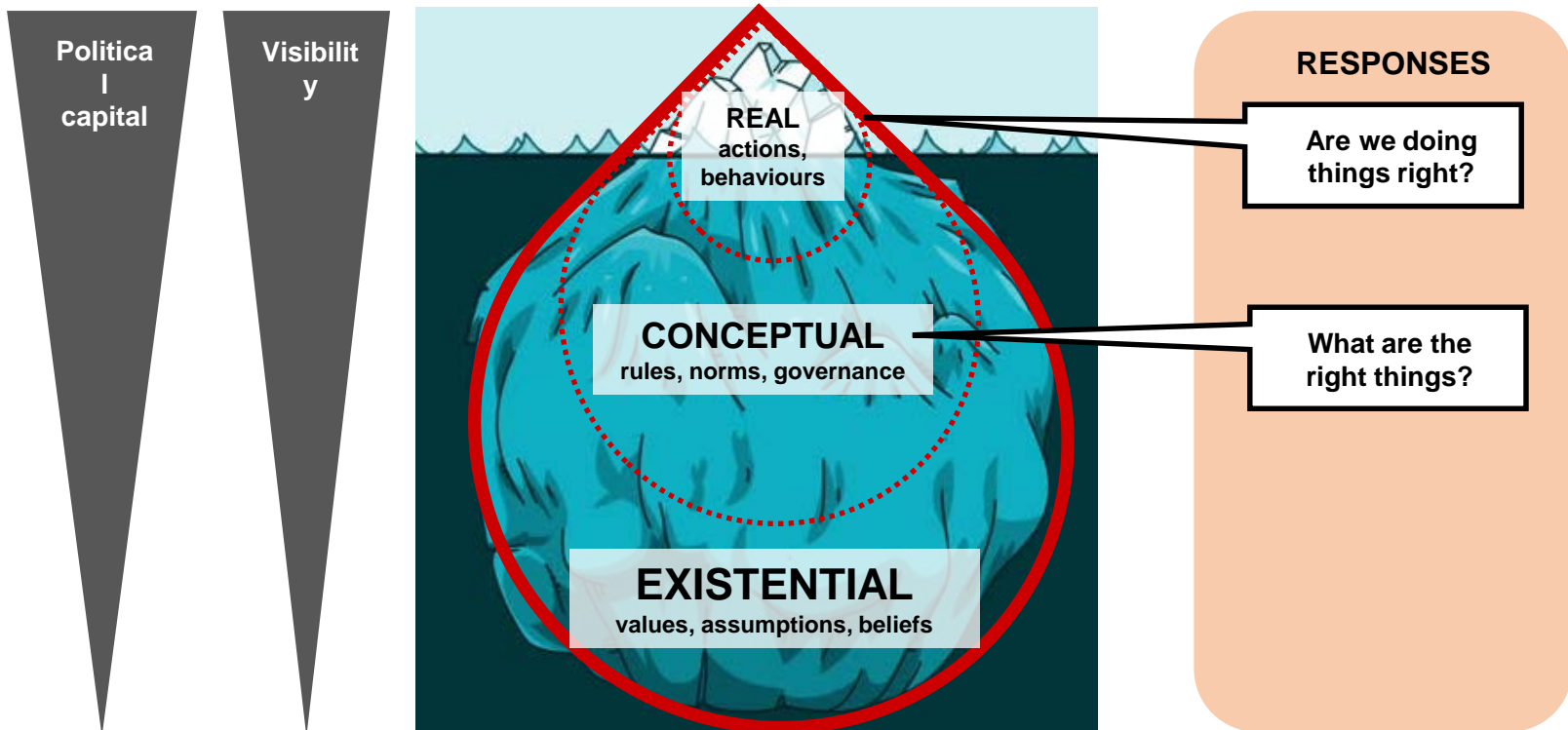
The Three Emergencies



James Butler, Ioan Fazey, Graham Leicester, Camille Manning Broome, Jeannette Dubinin

Rethinking government's approach to adaptation planning

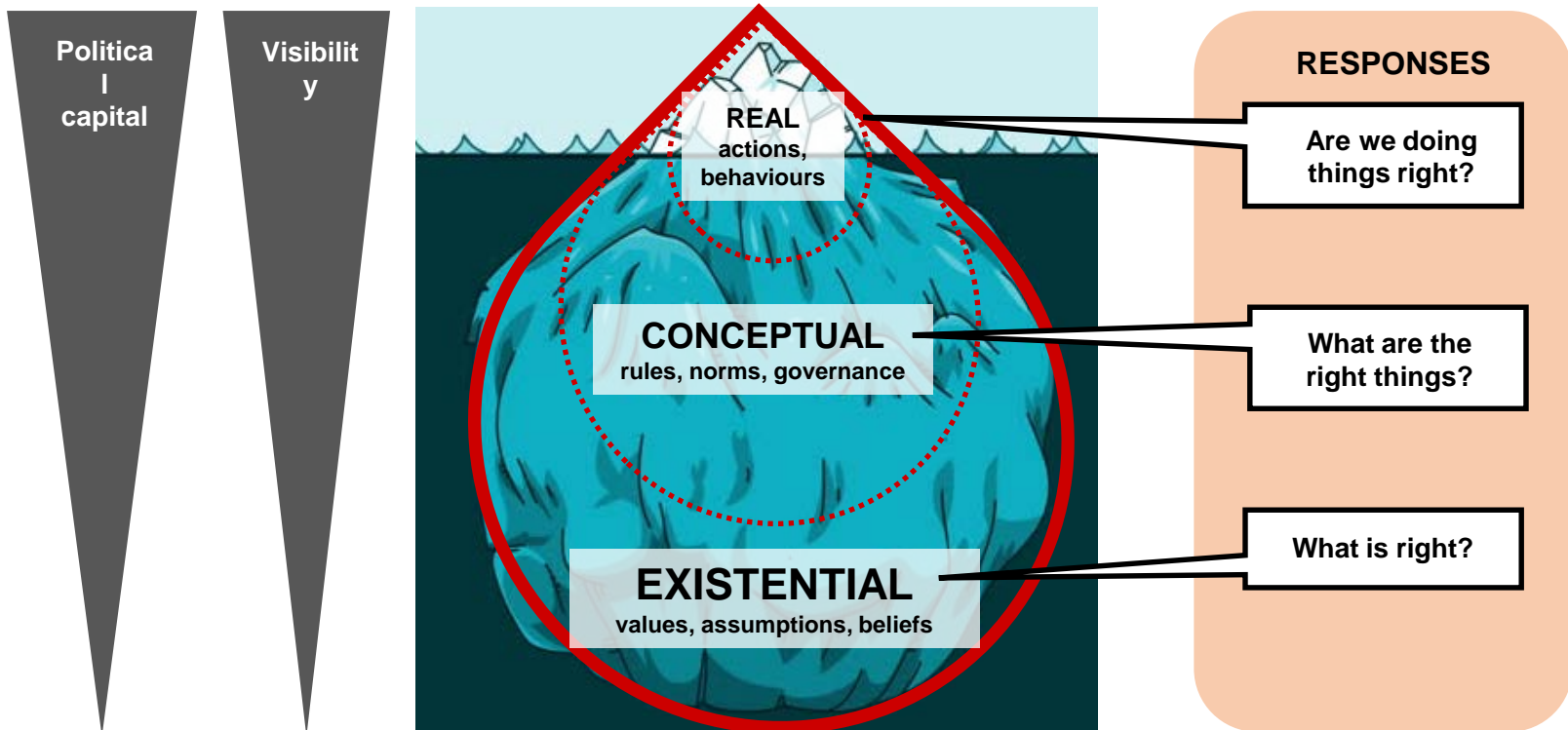
The Three Emergencies



James Butler, Ioan Fazey, Graham Leicester, Camille Manning Broome, Jeannette Dubinin

Rethinking government's approach to adaptation planning

The Three Emergencies



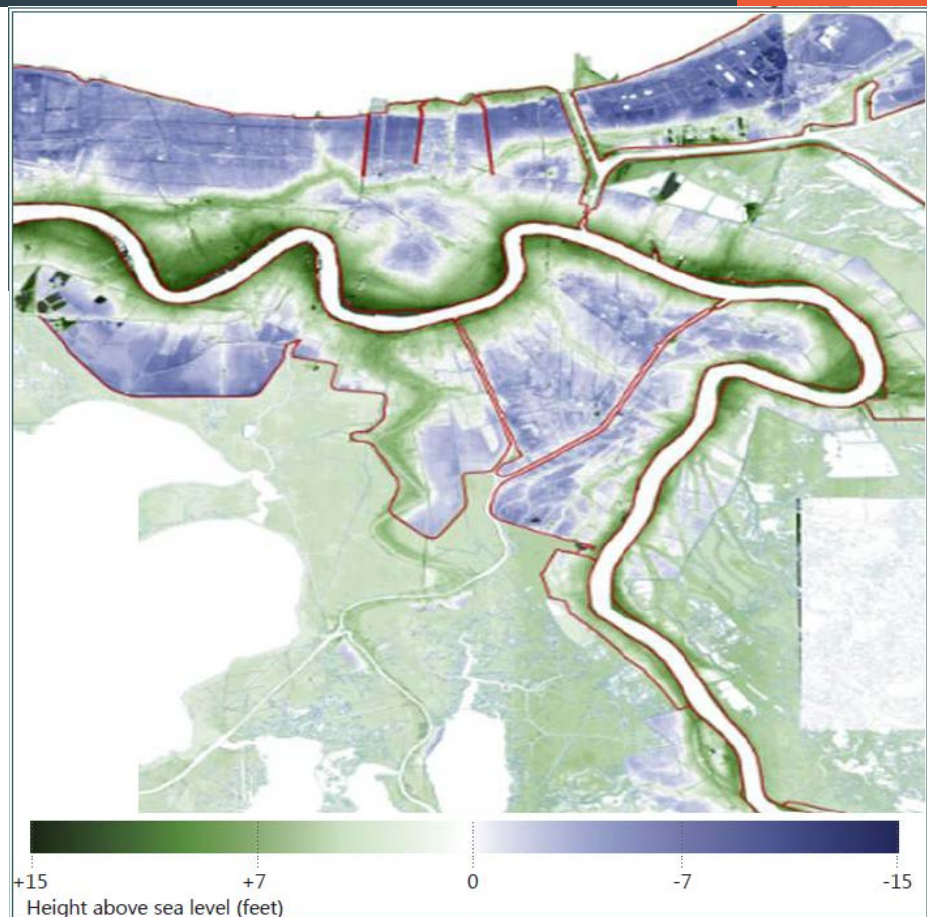
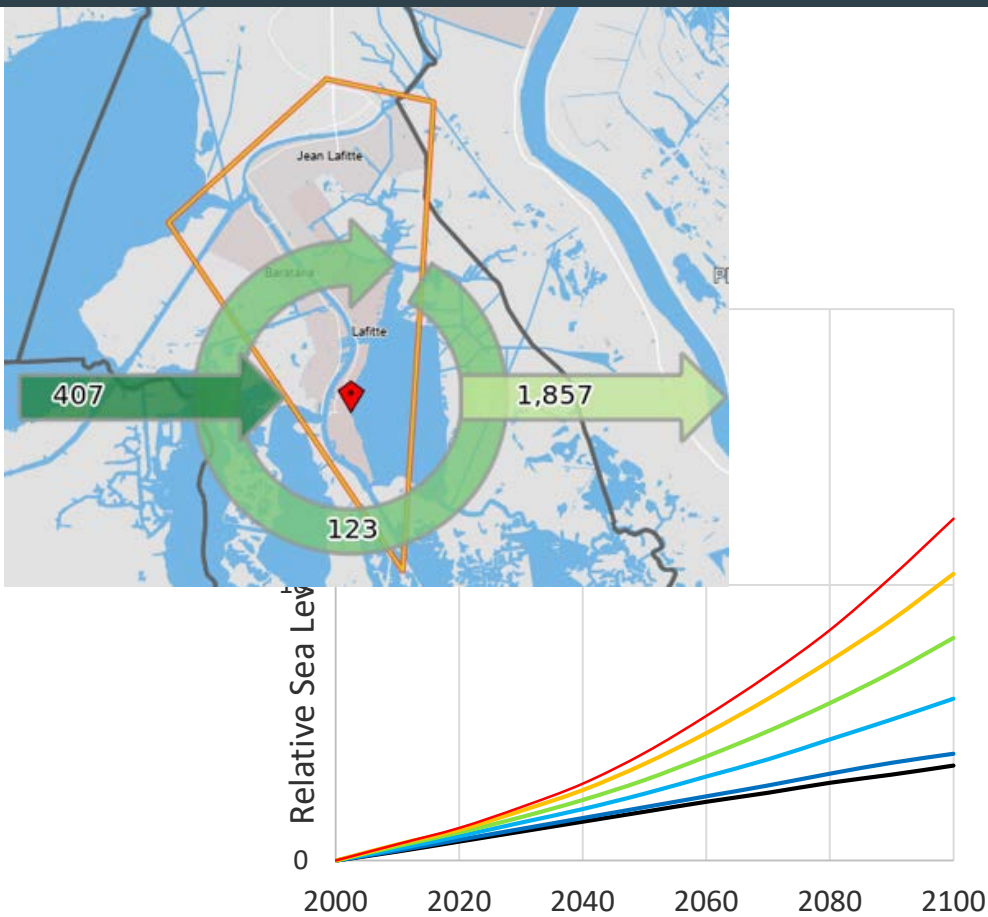
James Butler, Ioan Fazey, Graham Leicester, Camille Manning Broome, Jeannette Dubinin

What's next?

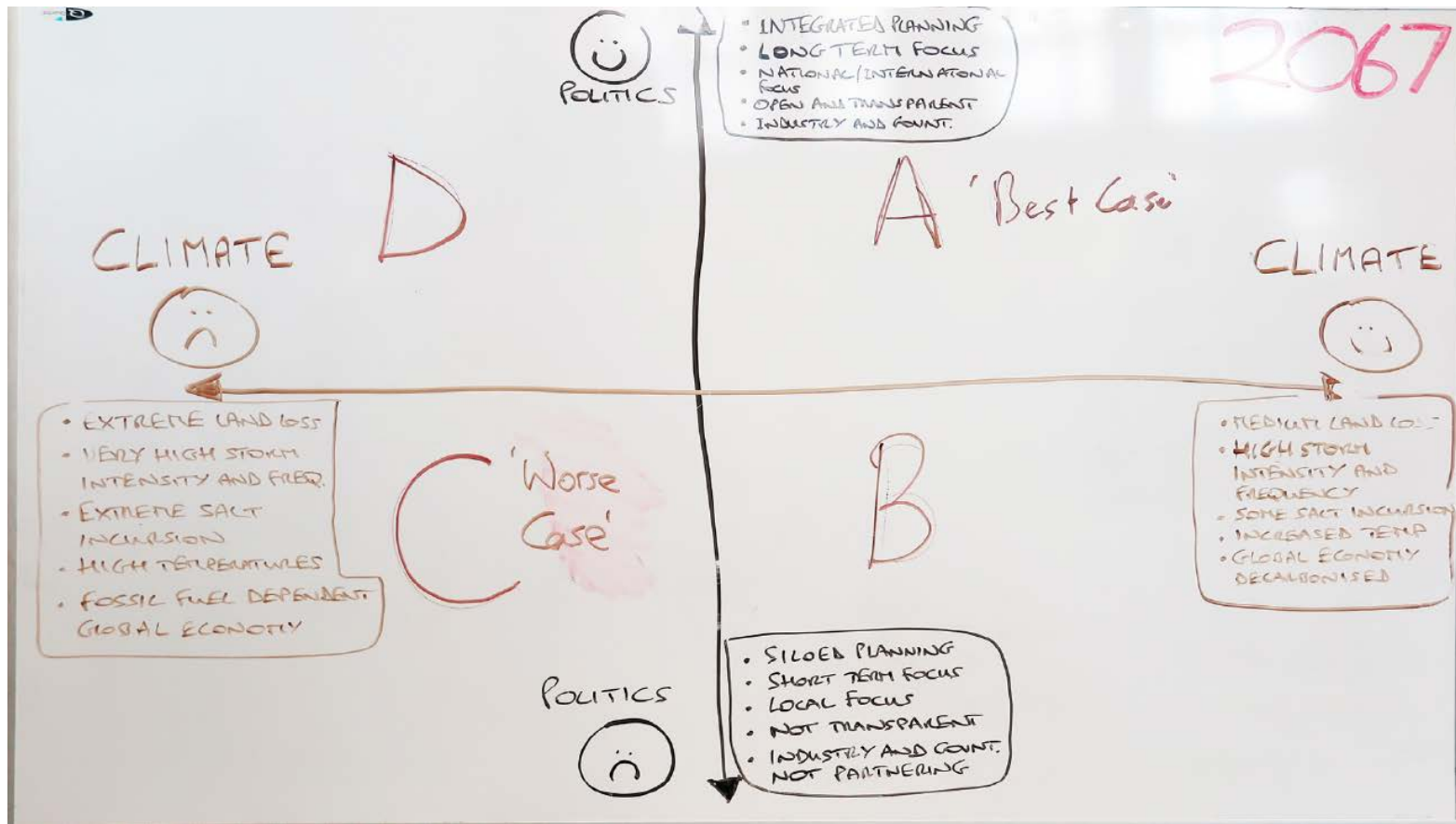
How do we incentivize big ideas like LA SAFE?



Good Data and Modeling



Start the Conversation



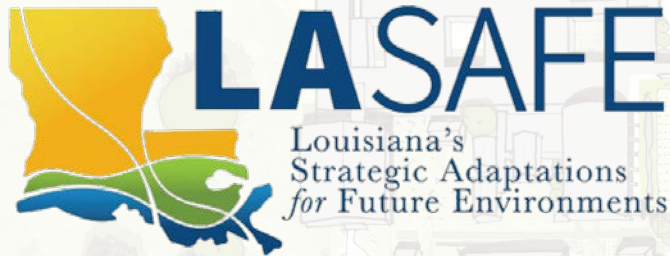
Need to Build in Flexibility



Leadership



Community-Centered Resilience: Lessons from Louisiana



Environmental and Energy Study Institute // 11.6.19

Mathew D. Sanders, AICP

Resilience Policy & Program Administrator
Louisiana Office of Community Development



Liz Williams Russell

Coastal Community Resilience Director
Foundation for Louisiana



Elder Donald Bogen, Jr.

Organizer
Bayou Interfaith Shared Community Organizing



Dr. Justin Kozak

Researcher & Policy Analyst
Center for Planning Excellence (CPEX)



CENTER for PLANNING EXCELLENCE



Community-Centered Resilience: Lessons from Louisiana

What did you think of the briefing?
Please take 2 minutes to let us know at:
www.eesi.org/survey

Materials will be available at: www.eesi.org/110619lasafe

Tweet about the briefing: [#eesitalk](https://twitter.com/eesitalk) [@eesionline](https://twitter.com/eesionline)